

COUNTY COUNCIL
SNOHOMISH COUNTY, WASHINGTON

AMENDED ORDINANCE NO. 94-113



CO00023046

ESTABLISHING AN URBAN GROWTH AREA
FOR THE TOWN OF DARRINGTON

WHEREAS, the Growth Management Act, Chapter 36.70A RCW (hereinafter the GMA) requires Snohomish County to designate an urban growth area (UGA) or areas within which urban growth shall be encouraged and outside of which growth can occur only if it is not urban in nature (RCW 36.70A.110(1)); and

WHEREAS, the planning goals of the GMA, which guide development of comprehensive plans and implementing ordinances, state that development shall be encouraged "in urban areas where adequate public facilities and services exist or can be provided in an efficient manner" (RCW 36.70A.020(1)), and that "the inappropriate conversion of undeveloped land into sprawling, low-density development" is to be reduced (RCW 36.70A.020(2)); and

WHEREAS, the GMA states that "[u]rban growth should be located first in areas already characterized by urban growth that have existing public facility and service capacities to serve such development, and second in areas already characterized by urban growth that will be served by a combination of both existing public facilities and services and any additional needed public facilities and services that are provided by either public or private sources" (RCW 36.70A.110(3)); and

WHEREAS, the GMA requires that each city that is located in the county shall be included within an UGA (RCW 36.70A.110(1)); and

WHEREAS, the GMA states that a UGA "may include territory that is located outside of a city only if such territory already is characterized by urban growth or is adjacent to territory already characterized by urban growth" (RCW 36.70A.110(1)); and

WHEREAS; the GMA requires that, based upon the population projection made for the county by the Washington State Office of Financial Management (OFM), the UGAs in the county "shall include areas and densities sufficient to permit the urban growth that is projected to occur in the county for the succeeding 20-year period" (RCW 36.70A.110(2)); and

WHEREAS, the GMA requires that each UGA "shall permit urban densities and shall include greenbelt and open space areas" (RCW 36.70A.110(2)); and

WHEREAS; the GMA requires that the county "attempt to reach agreement with each city on the location of an UGA within which the city is located" (RCW 36.70A.110(2)); and

WHEREAS, the cities, towns, Tulalip Tribes and the county initiated "Snohomish County Tomorrow," a collaborative planning process among all jurisdictions within the county, and have utilized Snohomish County Tomorrow to address various requirements for implementing the GMA; and

WHEREAS, all cities and towns and the Tulalip Tribes have been kept informed about, and most have actively participated in Snohomish County Tomorrow, which has resulted in a set of "Snohomish County Tomorrow Goals, Steering Committee, October 1990," a "Working Paper, Designating Urban Growth Areas, March 15, 1991," a "Model Interlocal Planning Agreement" (September 25, 1991) and the preparation of countywide planning policies for Snohomish County; and

WHEREAS, the Snohomish County Council adopted Ord. 93-004 containing the countywide planning policies pursuant to the GMA, establishing a countywide framework from which county and city comprehensive plans are to be developed, including policies that address the implementation of the GMA's UGA requirements, joint county and city planning within urban growth areas, and the promotion of contiguous and orderly development and provision of urban services to such development; and

WHEREAS, in October and December of 1993 and March of 1994, the county council established interim UGAs (hereinafter IUGAs) following a joint city/county process, as required by RCW 36.70A.110(4), and made them effective until replaced by final UGAs; and

WHEREAS, the county consulted with the Town of Darrington (the town) and requested that the town propose the location of an urban growth area; and

WHEREAS, a goal of the county's Growth Management Act Comprehensive Plan (GMACP) is to establish compact, clearly defined UGAs with the objective of providing sufficient capacity to accommodate the majority of the county's projected population and employment growth over the next 20 years; and

WHEREAS, final UGAs meeting the goals and requirements of the GMA have been incorporated into the GMACP, which constitutes the county's comprehensive plan under the GMA; and

WHEREAS, the Snohomish County planning commission held public hearings to accept public input on all elements of the GMACP on April 19 and 26, May 3, 9, 17, 24, and 31, and June 20, 1994, deliberated over proposed UGAs on June 20 and 28, and July 18 and 26, 1994, and forwarded its recommendation on UGAs to the county council, and

WHEREAS, the county council held public hearings on December 12 and December 19, 1994 and January 10 and January 18, 1995 to consider the entire record and hear testimony on ordinance 94-113, establishing a UGA for the Town of Darrington.

NOW, THEREFORE, BE IT ORDAINED:

Section 1. The Snohomish County Council makes the following findings:

1. The cities, towns, Tulalip Tribes and the county have used "Snohomish County Tomorrow" (SCT) to develop countywide planning policies addressing UGAs, a common land capacity analysis methodology for urban areas, and population and employment allocations for each UGA.
2. On June 25, 1991, the county council requested that the town submit a proposed urban growth area boundary for county council review.
3. Since June 1991, the town and county have corresponded and met to discuss the IUGA and UGA and joint planning for the Darrington area. No interlocal planning agreement was reached between the county and the town.
4. The county adopted an IUGA for the town on October 11, 1993. The IUGA was based on countywide planning policies, Vision 2020 (the Growth and Transportation Strategy for the Central Puget Sound Region adopted by the Puget Sound Council of Governments, predecessor to the Puget Sound Regional Council (PSRC) in October, 1990), the multi-county planning policies for King, Kitsap, Pierce and Snohomish counties adopted by the PSRC in March, 1993, the interim county resource lands designations, existing county subarea comprehensive plan designations and policies, environmental constraints, manmade and natural features within and adjacent to the IUGA, open space and greenbelts within and adjacent to the IUGA, population projections, land capacity analyses and available information, service areas and/or special district boundaries, and correspondence and consultation between the town and the county, all as stated in Snohomish County Council ordinance No. 93-095.
5. The UGA boundary adopted by this ordinance differs from the IUGA as follows: the northeast corner of the UGA has been moved to coincide with the natural boundary of the river.
6. Both the IUGA and the UGA boundaries include adequate residential capacity to accommodate the "Diversified Centers" growth projection of the GMACP for the Darrington UGA. The Diversified Centers growth projection was chosen by the county council because it is consistent with the preferred growth alternative of the majority of cities and towns within the county, and is consistent with the Vision 2020 regional growth and transportation strategy.

The county considered the information received from each jurisdiction and reallocated approximately 20,000 of the population growth and 5,000 of the job growth from cities in southwest county where additional capacity is limited, to outlying UGAs where additional capacity is available and where cities have indicated a preference for higher growth targets. The GMACP incorporates this

alternative population and employment allocation which is shown in Appendix D of the General Policy Plan.

The total additional population capacity within the Snohomish County composite UGA as documented by both city and county comprehensive plans does not exceed the total 20-year forecasted UGA population growth by more than 15 percent.

7. There is sufficient land capacity within the UGA to accommodate the 20-year urban growth and employment forecasts for the incorporated and unincorporated UGA.
8. The basis for an open space network within and around the UGA is established by the GMACP through the regulation of critical areas and native growth protection areas which will be part of subdivisions, open space designations for tax assessment purposes, and public and private open space and park land acquisition. The land capacity analysis demonstrates that there is sufficient land within the unincorporated portion of the UGA to provide for future open space requirements through these methods.
9. The GMACP encourages urban growth within all unincorporated portions of UGAs by establishing a minimum density of four to six housing units per acre for new subdivisions with a provision for reduced densities in the Darrington UGA which does not have a sanitary sewer system.
10. The GMACP directs that urban growth outside of the UGA be restricted by 1) creating no new designated areas with densities greater than one housing unit per 2.3 acres; 2) calling for focused review during the detailed rural/resource plan development, of those areas which have historically been designated and/or developed at densities of one to two dwelling units per acre; 3) creating a rural cluster development option which preserves significantly more open space in rural areas; and 4) designating resource lands with low residential densities, which lands constitute a significant portion of non-federal rural lands in Snohomish County.
11. In April 1994, the town was provided with a copy of the draft including a UGA map, and was invited in writing to review the UGA boundary and provide comments or propose and justify an alternative boundary during the planning commission hearings on the GMACP. On September 9, 1994, the town was also provided with a copy of the GPP and the UGA recommended by the planning commission and was apprised of the county council's GPP hearing process.
12. There has been early and continuous public participation in the development of the UGA.

13. The county has conducted an environmental review of the UGA according to the provisions of the State Environmental Policy Act, Chapter 43.21C RCW and Title 23 SCC, the Snohomish County Environmental Policy Ordinance, through environmental review of the GMACP and issuance of a Draft Environmental Impact Statement (DEIS) addressing all components of the GMACP, two addenda to the DEIS addressing the impacts of more detailed transportation and capital facilities elements, and a final EIS (FEIS).
14. The GMACP includes commitments to an initial population and employment target reconciliation process, subsequent growth and land capacity monitoring processes, and a GMACP and UGA amendment process which will ensure an adequate land supply throughout the 20-year planning period.
15. The basis for a continuing joint town/county planning process for this UGA has been established in the countywide planning policies and the GMACP. The process over the next six months to two years will include a detailed examination of land uses within the UGA and a re-examination of the UGA boundary. This process may result in adjustments to the UGA in light of considerations such as the need for employment-generating land uses and public lands and changes in capacity resulting from completion of subarea, urban centers and utility system plans.
16. Where the UGA boundary is adjacent to a public road right of way, the UGA boundary will include the entire right of way width.

Section 2. Based on the foregoing findings, the Snohomish County Council makes the following conclusions:

1. The UGA is consistent with the requirements of the GMA and the planning goals set out in RCW 36.70A.020 (1) and (2).
2. The UGA is consistent with decisions issued by the Central Puget Sound Growth Management Hearings Board interpreting the GMA's requirements for UGAs.
3. The UGA is consistent with and coordinated with the Vision 2020 regional growth and transportation plan, the countywide planning policies, and the multi-county planning policies for King, Kitsap, Pierce and Snohomish counties adopted March 1993 by the Puget Sound Regional Council.
4. The UGA is consistent with the future land use map and all other elements and components of the GMACP.
5. The planning commission and the county council have fully considered public input in making recommendations and decisions on the UGA.

6. The county has met all state and local requirements for interjurisdictional coordination, public notice and environmental review with regard to the UGA.
7. Consistency and coordination of the UGA with the town's GMA-based comprehensive plans is addressed and ensured by the continuing joint city/county planning process established in the countywide planning policies and the GMACP.

Section 3. The county council bases its findings and conclusions on the entire record of testimony and exhibits, including all written and oral testimony before the planning commission and county council.

Section 4. Based on the foregoing findings and conclusions, the county council hereby adopts the UGA boundary for the Town of Darrington shown on a map entitled "Darrington UGA" and incorporated herein by reference as Exhibit A. UGA maps shall be maintained for public inspection in the department of planning and development services and by the clerk of the council, and copies of said maps shall be made available to the public upon request. For regulatory purposes, the boundary of the UGA is depicted on county assessor's maps incorporated herein as Exhibit B.

DATED this 28th day of June, 1995.

ATTEST:

Snohomish County, Washington

Sheila McCallister
Asst. Clerk of the County Council

Karen Miller
Chair, County Council

- () Approved
- () Emergency
- () Vetoed

Date

6/30/95

[Signature]
County Executive

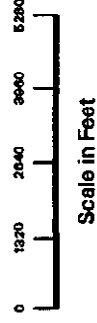
0-24

DARRINGTON

EXHIBIT A

 UGA Boundary

 Incorporated City Area

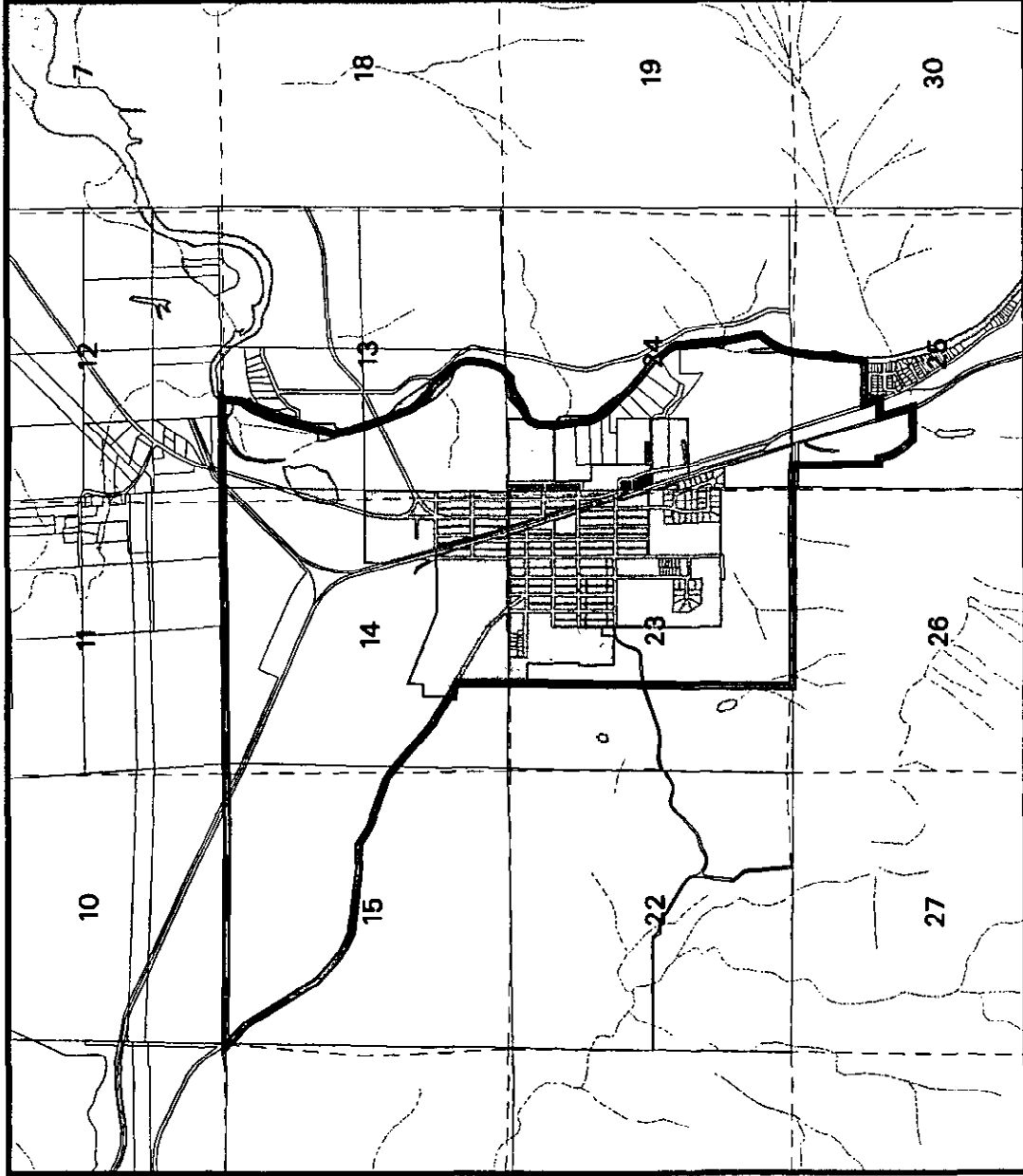


June 28, 1995

The base used to compile parcelization on this map is incomplete. Please consult the appropriate assessor parcel map for discrepancies and/or updated information.



Snohomish County



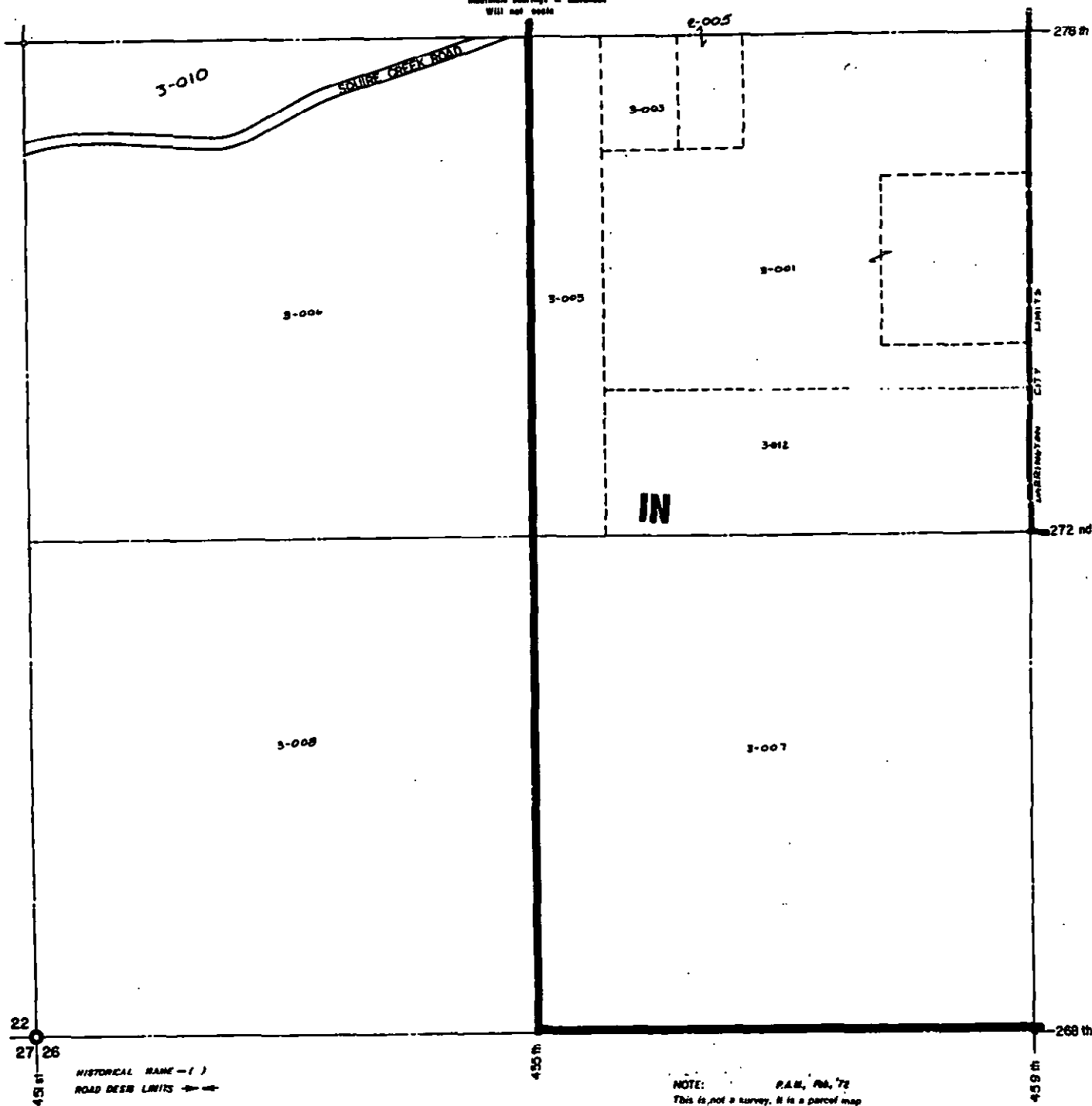
Map Produced by Snohomish County Planning and Development Services: Cartography Section: darr-uga.am1

S.W. 1/4, SEC. 23, T.32N., R.9E.

1" = 200'

BM 100

No survey available
Indefinite bearings & distances
Will not locate



N.W. 1/4, SEC. 23, T.32N., R.9E.

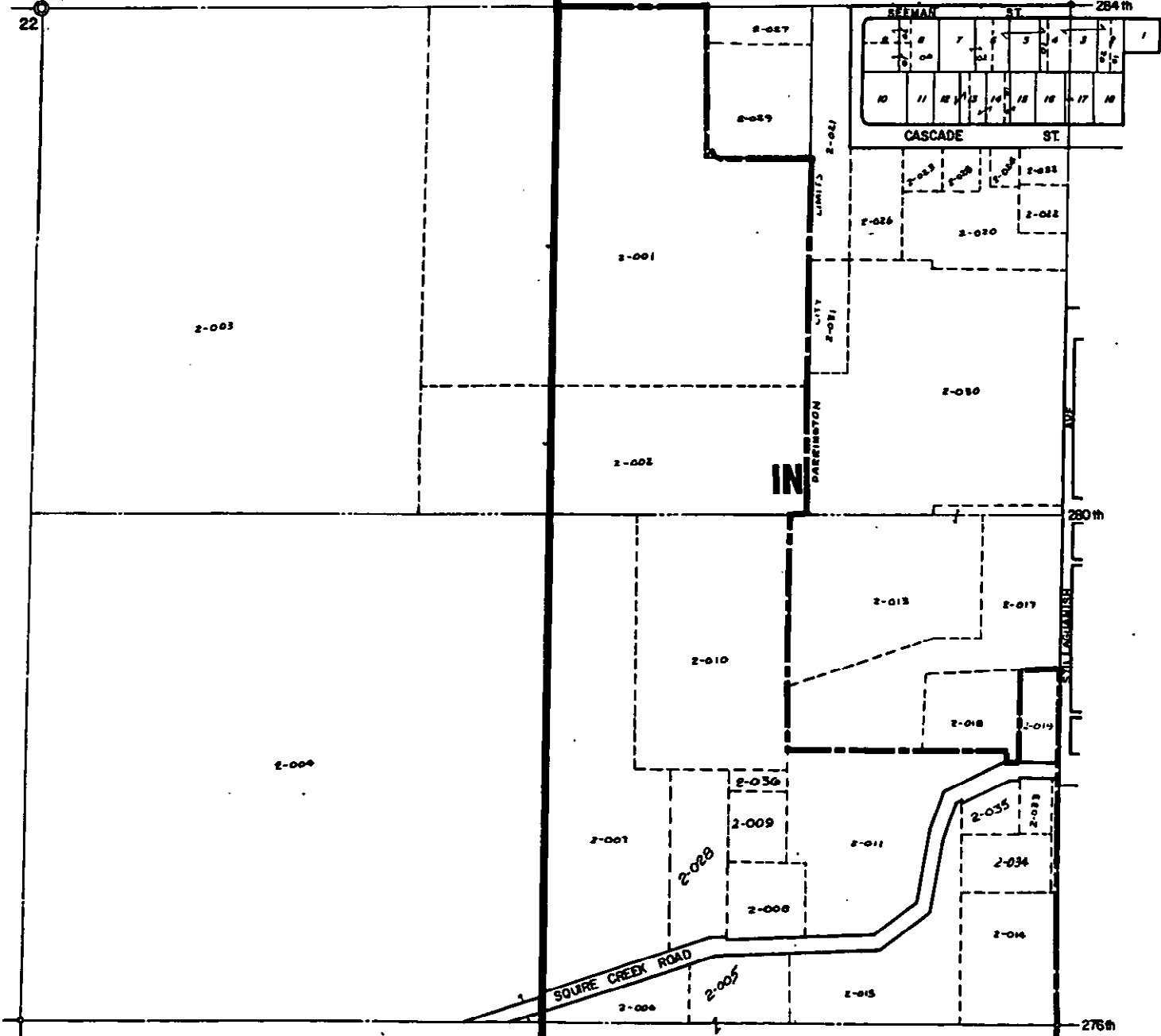
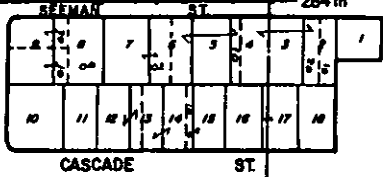
BM 100

No survey available
Indicates bearings & distances
with not scale 1" = 200'

15 14
22

BALDWIN'S ADD. (396)

284 m



4516

HISTORICAL NAME - ()
ROAD DEED LIMITS - - - -

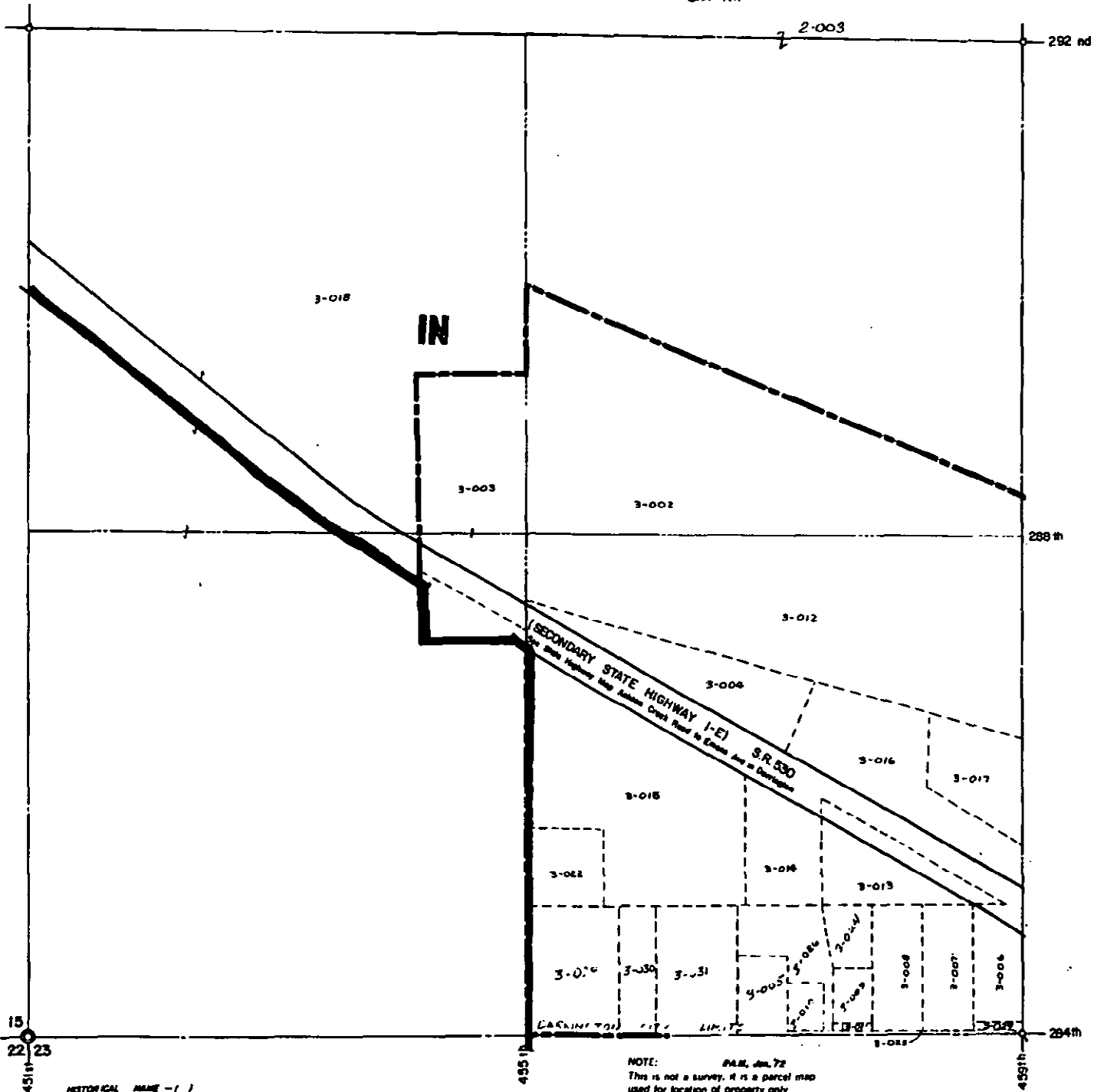
4551

NOTE: R.L.M. No. 72
This is not a survey. It is a parcel map
used for location of property only.

MAY 25 1935

S.W. 1/4, SEC. 14, T.32N., R.9E.
1" = 200'

BM 100



NOTE: P.M., Jan. 72
This is not a survey, it is a parcel map
used for location of property only

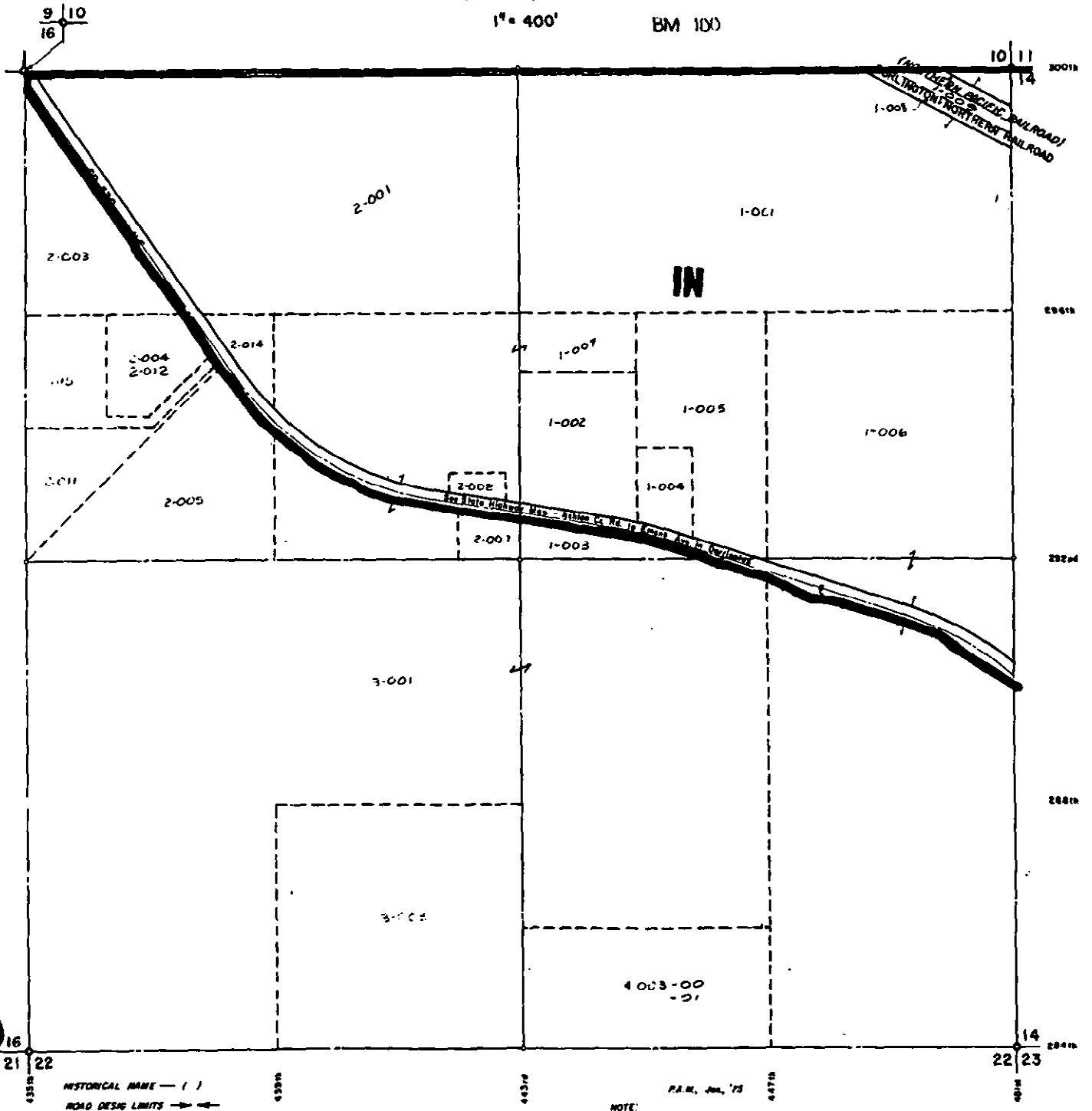
MAY 25 1995

HISTORICAL NAME - ()
ROAD DESIGN LIMITS ->->

SEC. 15, T. 32N., R. 9E.W.M.

1" = 400'

BM 100

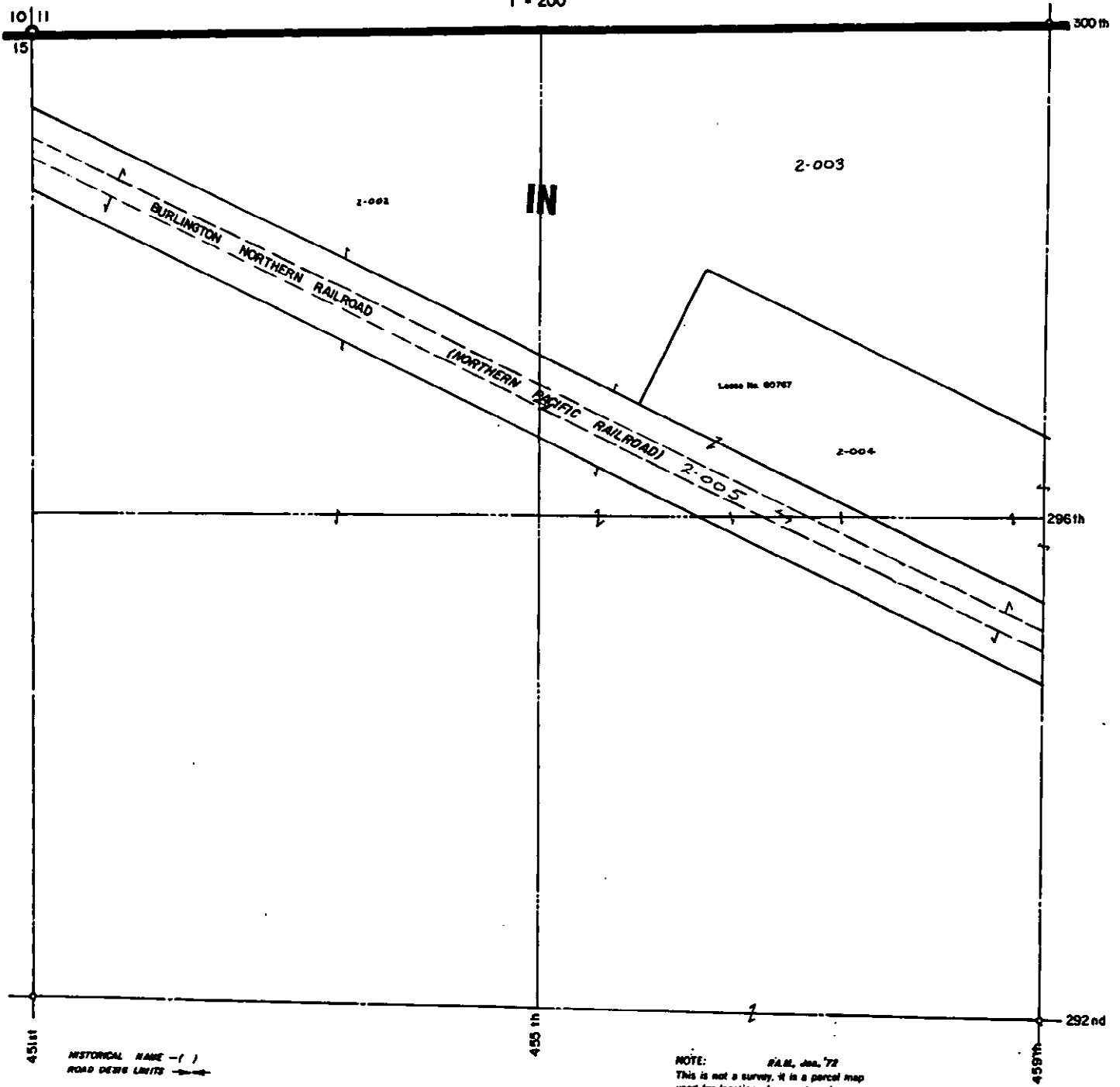


HISTORICAL NAME ()
ROAD DESIGN LIMITS —> ←

P.A.M., Jun., '75
NOTE:
This is not a survey, it is a general map
used for location of property only.

MAY 25 1995

N.W. 1/4, SEC. 14, T.32N., R.9E. BM 100
1" = 200'



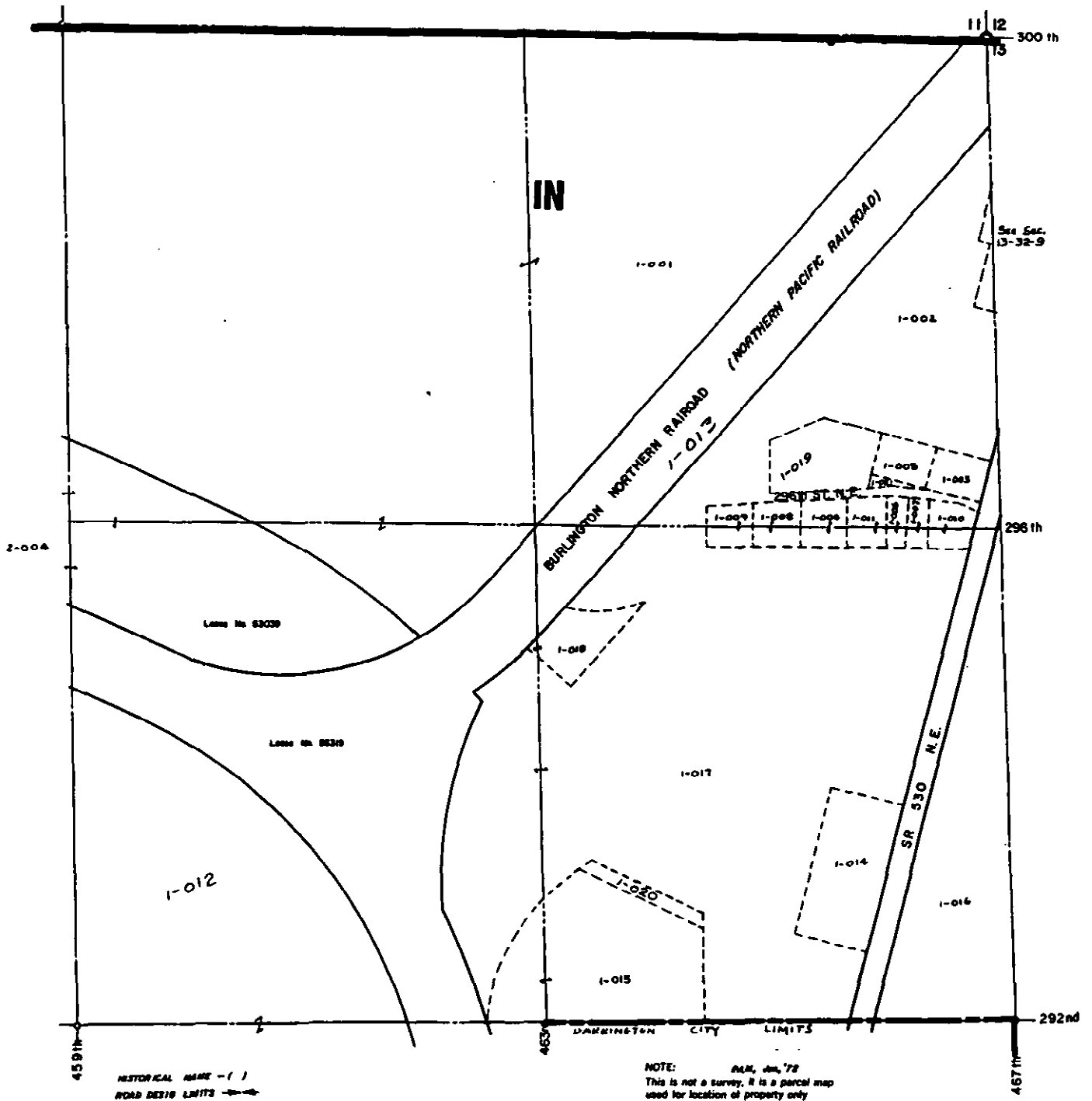
HISTORICAL NAME - ()
ROAD DEWE LIMITS ->->

NOTE: P.M., Jan. 72
This is not a survey, it is a parcel map
used for location of property only

MAY 25 1995

N.E. 1/4, SEC. 14, T.32N, R.9E.
1" = 200'

BM 100

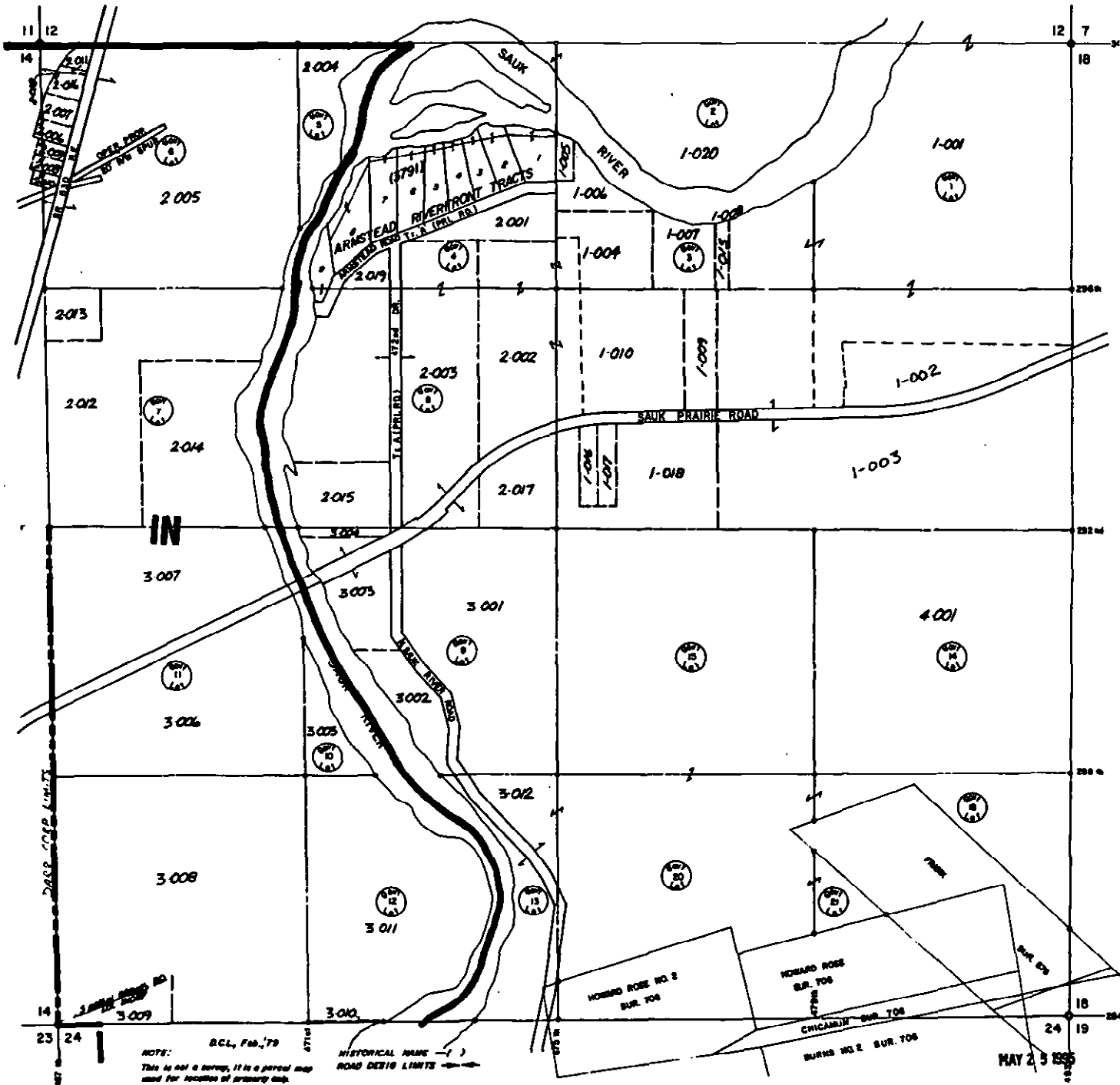


MAY 25 1995

SEC. 13, T. 32 N., R. 9 E. W.M.

1"=400'

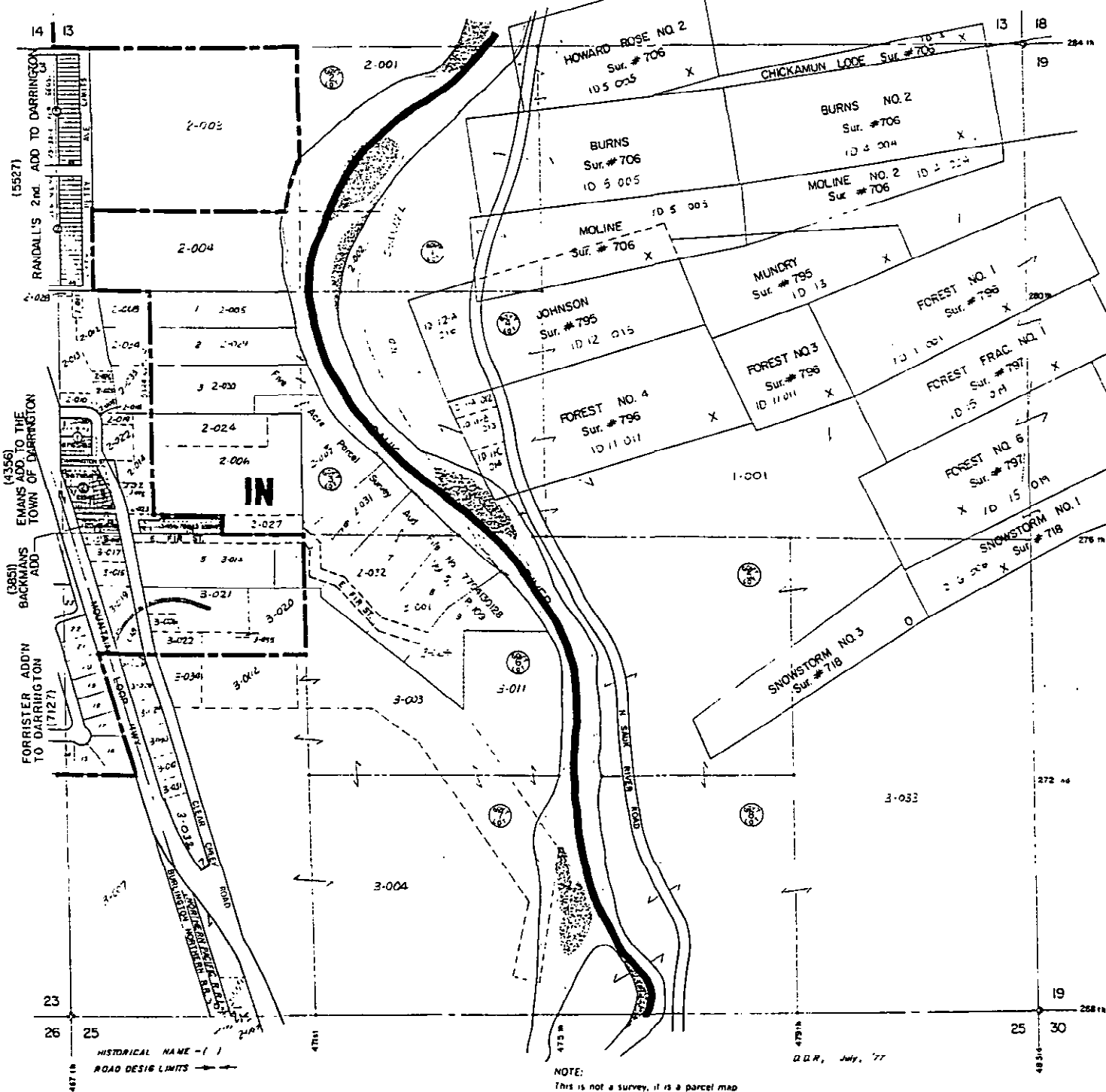
BM 100



SEC 24, T. 32 N., R. 9 E. W.M.

1" = 400'

EM 1(X)

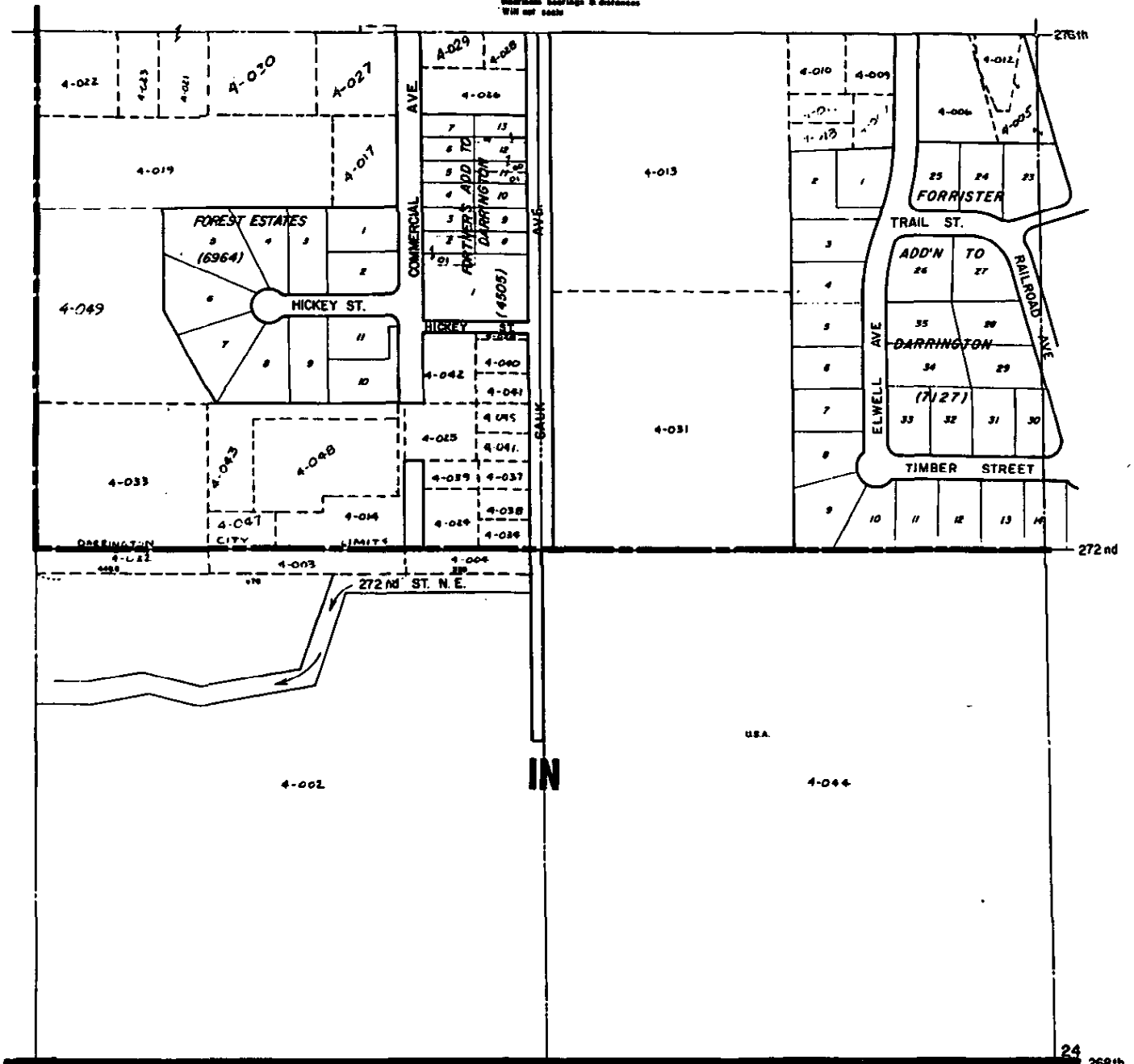


S.E. 1/4, SEC. 23, T.32N., R.9E.

1" = 200'

BM 100

No survey available
 Refer to bearings & distances
 Will not scale



459th

HISTORICAL NAME - ()
 ROAD DESIGN LIMITS - - - -

463rd

NOTE: B.M., Feb. '72
 This is not a survey, it is a parcel map
 used for location of property only

24
 268th
 26 | 25
 467th
 MAY 25 1995