

Adopted: 4/06/2017
Effective: 4/16/2017

SNOHOMISH COUNTY COUNCIL
SNOHOMISH COUNTY, WASHINGTON

ORDINANCE NO. 17-012

ADOPTING CHANGES IN VOTING PRECINCTS PURSUANT TO
RCW 29A.16.040, RCW 29A.16.050 AND CHAPTER 2.47 SCC; AMENDING
CHAPTER 2.47 SNOHOMISH COUNTY CODE

WHEREAS, SCC 2.47.040(2) provides that the County Auditor may temporarily adjust precinct boundaries to maintain conformance with applicable state laws, and that such revisions to voting precincts must be submitted to the County Council for adoption by ordinance no later than May 1 of each year; and

WHEREAS, Exhibit A attached hereto sets forth the precinct changes made by the Auditor since March 17, 2016, including those temporarily adjusted to maintain conformance with applicable state law, resulting in a total of 775 voting precincts in Snohomish County as of February 27, 2017. Exhibit A details 9 changes to precincts due to city annexations and 15 administrative changes to precincts due to growth in the number of voters in a precinct;

NOW, THEREFORE, BE IT ORDAINED:

Section 1. The Council finds that pursuant to the authority of SCC 2.47.040(2), the Auditor made those adjustments to precinct boundaries since March 17, 2016, that are set forth in Exhibit A, attached hereto and incorporated herein by this reference.

Section 2. Snohomish County Code Section 2.47.030, last amended by Ordinance 16-012 on March 2, 2016, is amended to read:

2.47.030 Precincts adopted.

(1) The adopted voting precinct boundaries for the county are those set forth in the precinct map books maintained on file with the clerk of the council and the Snohomish county auditor's office, subject to revision from time to time in accordance with SCC 2.47.040.

(2) To implement boundary changes resulting from redistricting following the federal decennial census and to implement changes that are necessary to maintain conformance with applicable laws in accordance with SCC 2.47.040, the precinct boundaries adopted by subsection (1) are revised cumulatively as set forth in the following documents:

(a) Exhibit A attached to Ordinance 02-016.

(b) Exhibit A attached to Ordinance 03-046.

- 1 (c) Exhibit A attached to Ordinance 04-054.
- 2 (d) Exhibit A attached to Ordinance 05-037.
- 3 (e) Exhibit A attached to Ordinance 06-035.
- 4 (f) Exhibit A attached to Ordinance 07-028.
- 5 (g) Exhibit A attached to Ordinance 08-061.
- 6 (h) Exhibit A attached to Ordinance 09-021.
- 7 (i) Exhibit A attached to Ordinance 10-015.
- 8 (j) Exhibit A attached to Ordinance 11-012.
- 9 (k) Exhibit A attached to Ordinance 12-016.
- 10 (l) Exhibit A attached to Ordinance 13- 019.
- 11 (m) Exhibit A attached to Ordinance 14-014.
- 12 (n) Exhibit A attached to Ordinance 15-018.
- 13 (o) Exhibit A attached to Ordinance 16-012.
- 14 (p) Exhibit A attached to Ordinance 17-012

15
 16 Copies of these documents are on file with the clerk of the council and the Snohomish
 17 county auditor's office.

18
 19 PASSED this 5th day of April, 2017.

20
 21 SNOHOMISH COUNTY COUNCIL
 22 Snohomish County, Washington

23
 24 

25
 26 Chairperson

27 ATTEST:

28
 29 

30 Clerk of the Council, *Asst.*

- 31
 32 APPROVED
 33 EMERGENCY
 34 VETOED

35
 36 DATE: 4/6/17

37
 38 

39 County Executive

40 ATTEST:

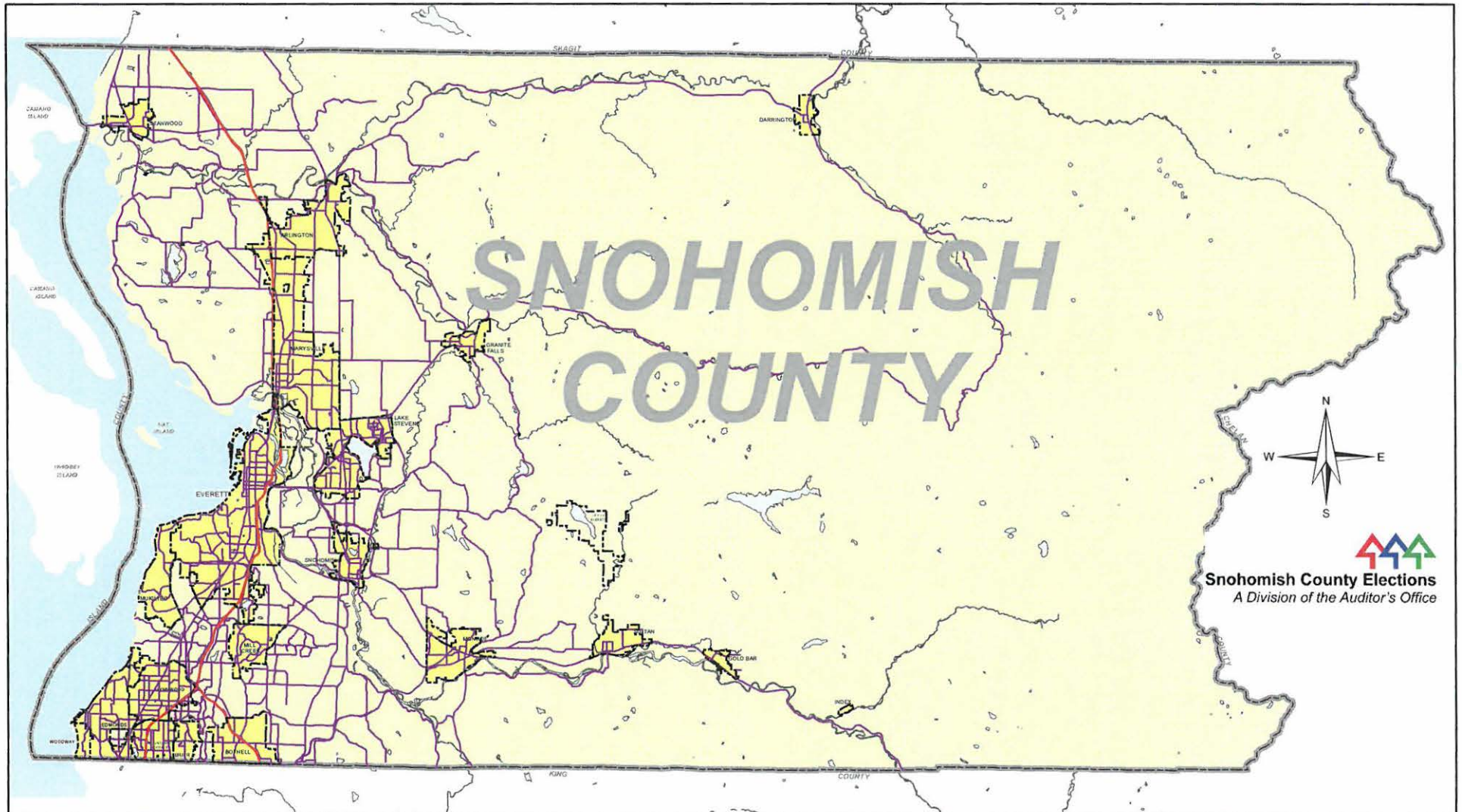
41
 42 

43
 44 Approved as to form only:

45
 46  DPA
 47 Ordinance No. 17 2/27/17

D-19

PRECINCT CHANGES 2017




Snohomish County Elections
A Division of the Auditor's Office

**Snohomish County Auditor
Carolyn Weikel**

Statistics For 2017 Precinct Adjustments

Precincts changed due to annexations	9
Precincts changed due to administrative need	<u>15</u>
Total number of precinct changes	24
New precincts created	2
Precincts dissolved	0
Last year's number of precincts	<u>773</u>
New total number of precincts	775

CONGRESSIONAL DISTRICT PRECINCT COUNT

<u>DISTRICTS</u>	<u>2016</u>	<u>2017</u>	<u>Estimated Voters</u>
CONGRESSIONAL DISTRICT #1	295	296	171,612
CONGRESSIONAL DISTRICT #2	420	421	250,627
CONGRESSIONAL DISTRICT #7	<u>58</u>	<u>58</u>	<u>33,521</u>
Totals	773	775	455,760

LEGISLATIVE DISTRICT PRECINCT COUNT

<u>DISTRICTS</u>	<u>2016</u>	<u>2017</u>	<u>Estimated Voters</u>
LEGISLATIVE DISTRICT #1	106	107	67,105
LEGISLATIVE DISTRICT #10	36	36	20,351
LEGISLATIVE DISTRICT #21	136	136	86,185
LEGISLATIVE DISTRICT #32	72	72	41,270
LEGISLATIVE DISTRICT #38	137	137	77,537
LEGISLATIVE DISTRICT #39	125	125	68,765
LEGISLATIVE DISTRICT #44	<u>161</u>	<u>162</u>	<u>94,547</u>
Total	773	775	455,760

COUNTY COUNCIL DISTRICT PRECINCT COUNT

<u>DISTRICTS</u>	<u>2016</u>	<u>2017</u>	<u>Estimated Voters</u>
COUNCIL DISTRICT #1	165	165	93,933
COUNCIL DISTRICT #2	143	143	80,349
COUNCIL DISTRICT #3	146	146	89,085
COUNCIL DISTRICT #4	151	152	96,592
COUNCIL DISTRICT #5	<u>168</u>	<u>169</u>	<u>95,801</u>
Totals	773	775	455,760

CRITERIA FOR ADJUSTING PRECINCT BOUNDARIES

To identify issues pertaining to precinct boundaries and the functional areas which might be impacted by the population, portions, descriptions and number of voting precincts, various factors have been reviewed. These include:

1. Boundary limitations

Legal requirements mandated by various RCW's require that precinct boundaries do not cross congressional, legislative, judicial, county council or municipal boundaries. These limitations might 'force' the creation of some precincts well below the target size.

2. Number of registered voters

The total number of registered voters per precinct shall not exceed the limit of 1,000 as set by the Snohomish County Council in SCC 2.47.

3. Precincts with school district splits

Since school districts are one of the most active districts having elections within the county, precincts with multiple school districts will be kept to an absolute minimum.

4. Growth potential of area

Growth potential is based on factors such as areas being within Urban Growth Areas and land parcel availability. Growth potential will be a factor in determining how close to the target size each precinct should be.

5. Precincts with multiple district splits

Areas with a large number of portions will be reviewed as to the possibility of reducing district splits within precinct boundaries.

6. Discontinuous precinct portions

Due to city annexations, various precincts have developed parts that are no longer contiguous with the main area of that precinct. These "islands" will be studied for possible merger into adjacent precincts.

7. Use of Census Boundary Standards

In all cases of boundary changes, Census Boundary Standards will be used where possible to designate new precinct lines.

MAP #		PRECINCT NAME	VOTERS BEFORE	TRANSFERRED	VOTERS AFTER	COMMENT
-------	--	---------------	---------------	-------------	--------------	---------

CITY ANNEXATIONS

	From	Cedarhome	606	-2	604	Tarte Annexation
1	To	Stanwood 5	802	2	804	Ord 1422 Finalized 7/25/2016
	From	NRV Tank Farm	0	0	0	Upper Bluff Annexation
2	To	Woodway 1	754	0	754	Ord 16-572 Finalized 7/29/2016
	From	Stanby	163	0	163	Ovenell Annexation
	From	Florence	243	0	243	Ord 1425 Finalized 8/25/2016
3	To	Stanwood 1	401	0	401	
	From	Spencer	3	0	3	Smith Island Annexation
4	To	Everett 5	693	0	693	Ord 3506-16 Finalized 8/30/2016

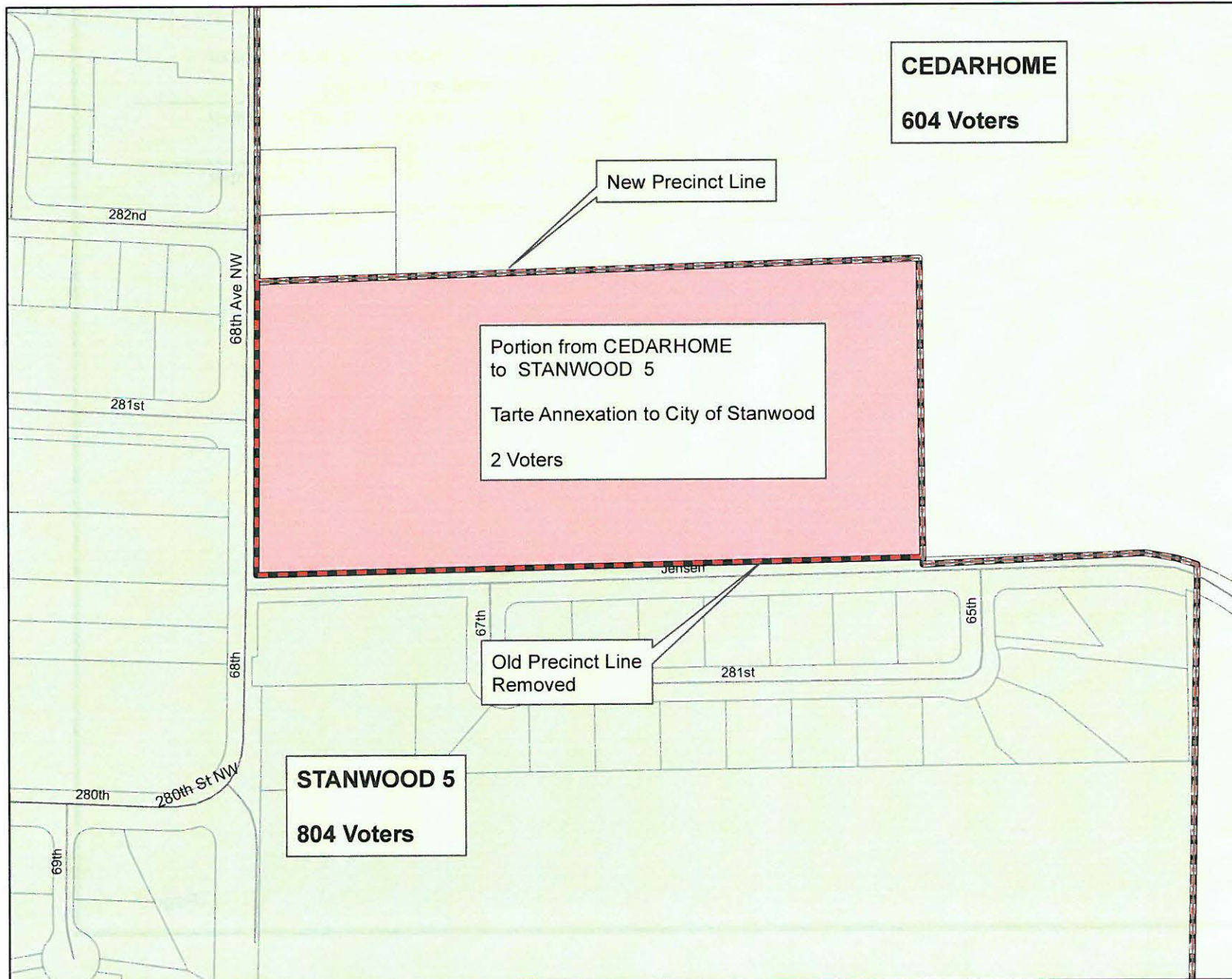
ADMINISTRATIVE CHANGES

	From	So. Alderwood	1039	-120	918	Split due to county limits on the number of registered voters in a precinct
5	To	Samoea	787	120	907	
	From	Redhawk	1056	-179	879	Split due to county limits on the number of registered voters in a precinct
6	To	Grannis	643	179	822	
	From	Willowdale	1027	-331	696	Split due to county limits on the number of registered voters in a precinct
7	To	Danvers (New)	0	331	331	
	From	Berkshire	1009	-301	708	Split due to county limits on the number of registered voters in a precinct
	To	Hearthstone	487	142	629	
8	To	Pinewood	482	159	641	

	From	Centennial	1014	-133	881	Split due to county limits on the number of registered voters in a precinct
9	To	Pellerin	751	133	884	
	From	Jordan	1032	-90	942	Split due to county limits on the number of registered voters in a precinct
10	To	Rivercrest	387	90	477	
	From	Lake Stevens 19	1212	-488	724	Split due to county limits on the number of registered voters in a precinct
11	To	Lake Stevens 29 (New)	0	488	488	

CEDARHOME annexation into STANWOOD 5

(County Council District 1)



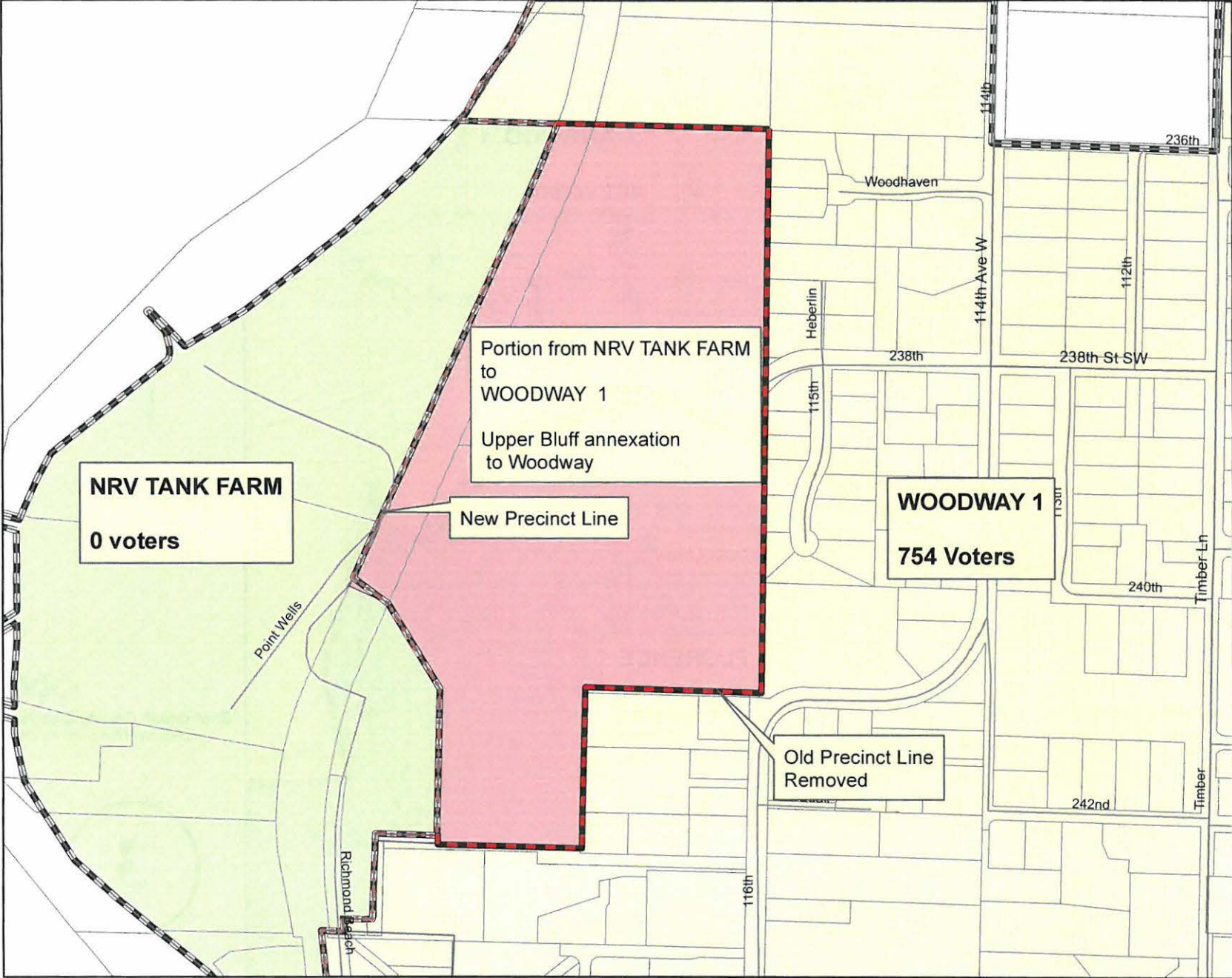
Legend

- City Boundary
- Major Roads
- Streets
- parcels
- Precinct Boundary
- Ord 1422



NRV TANK FARM annexation into WOODWAY 1

(County Council District 3)



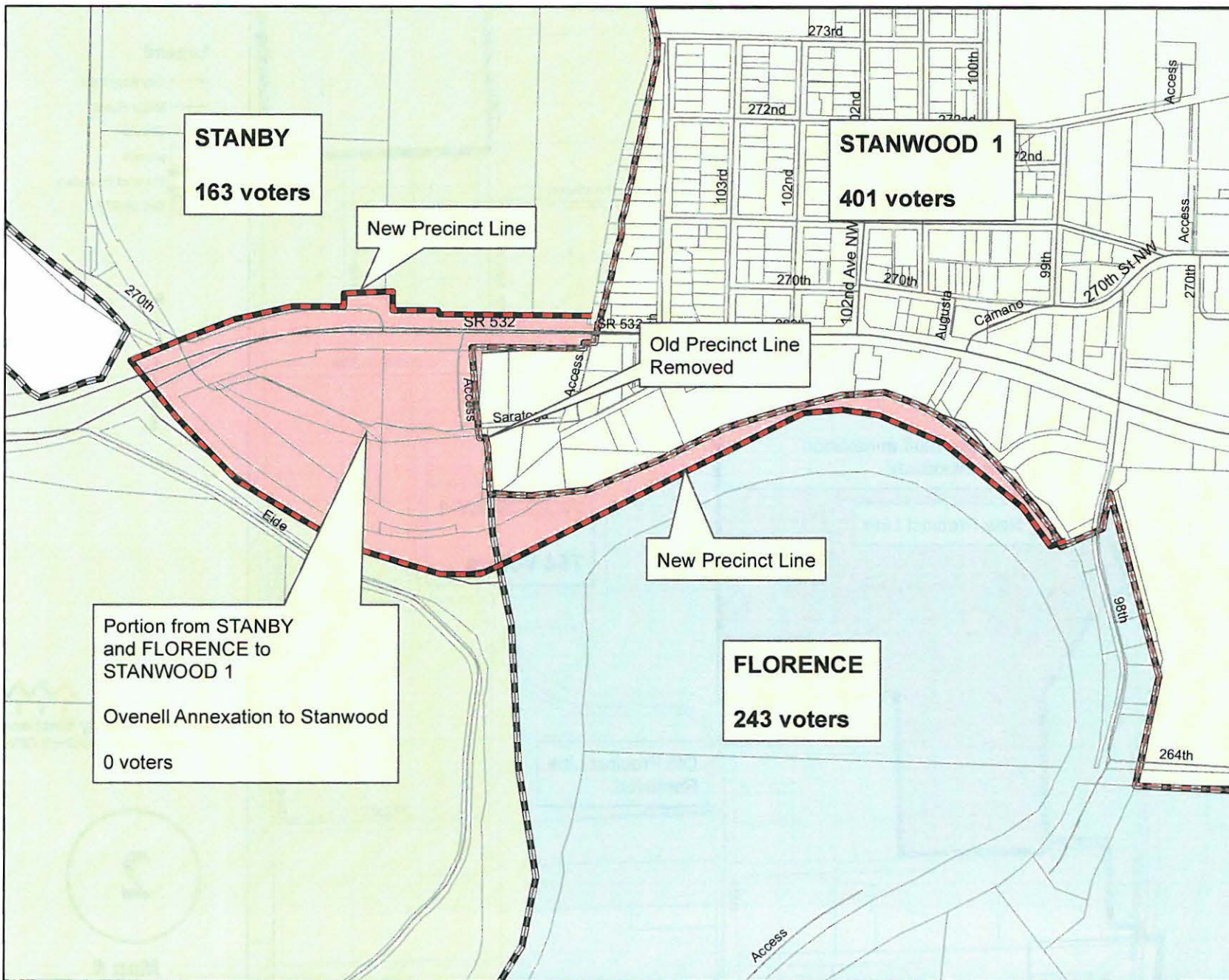

Snohomish County Elections
A Division of the Auditor's Office

2

Map #

FLORENCE & STANBY annexation into STANWOOD 1

(County Council District 1)



Legend

- City Boundary
- Major Roads
- Streets
- parcels
- ▬ Precinct Boundary
- Ord 1425



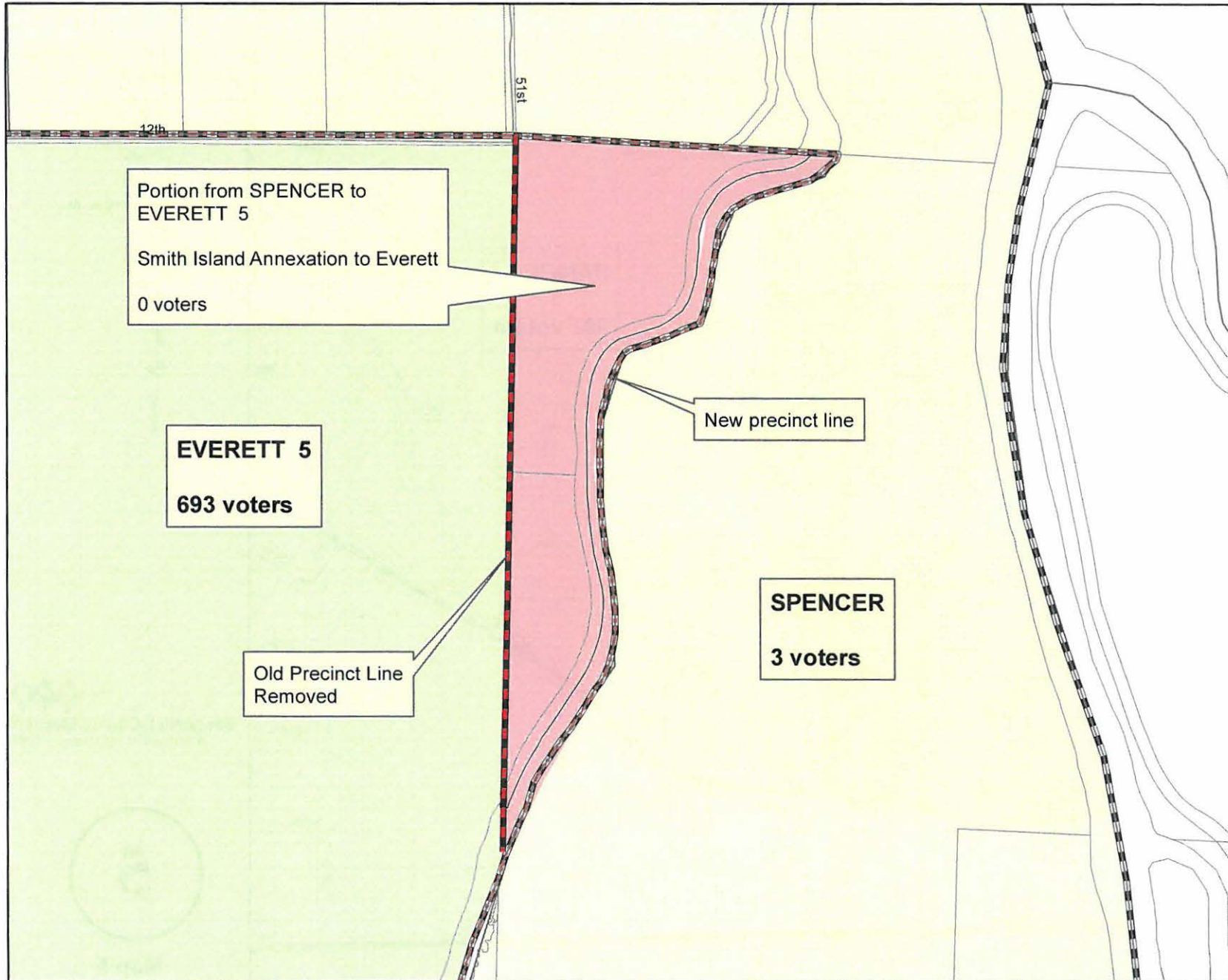

Snohomish County Elections
A Division of the Auditor's Office

3

Map #

SPENCER annexation into EVERETT 5

(County Council District 2)



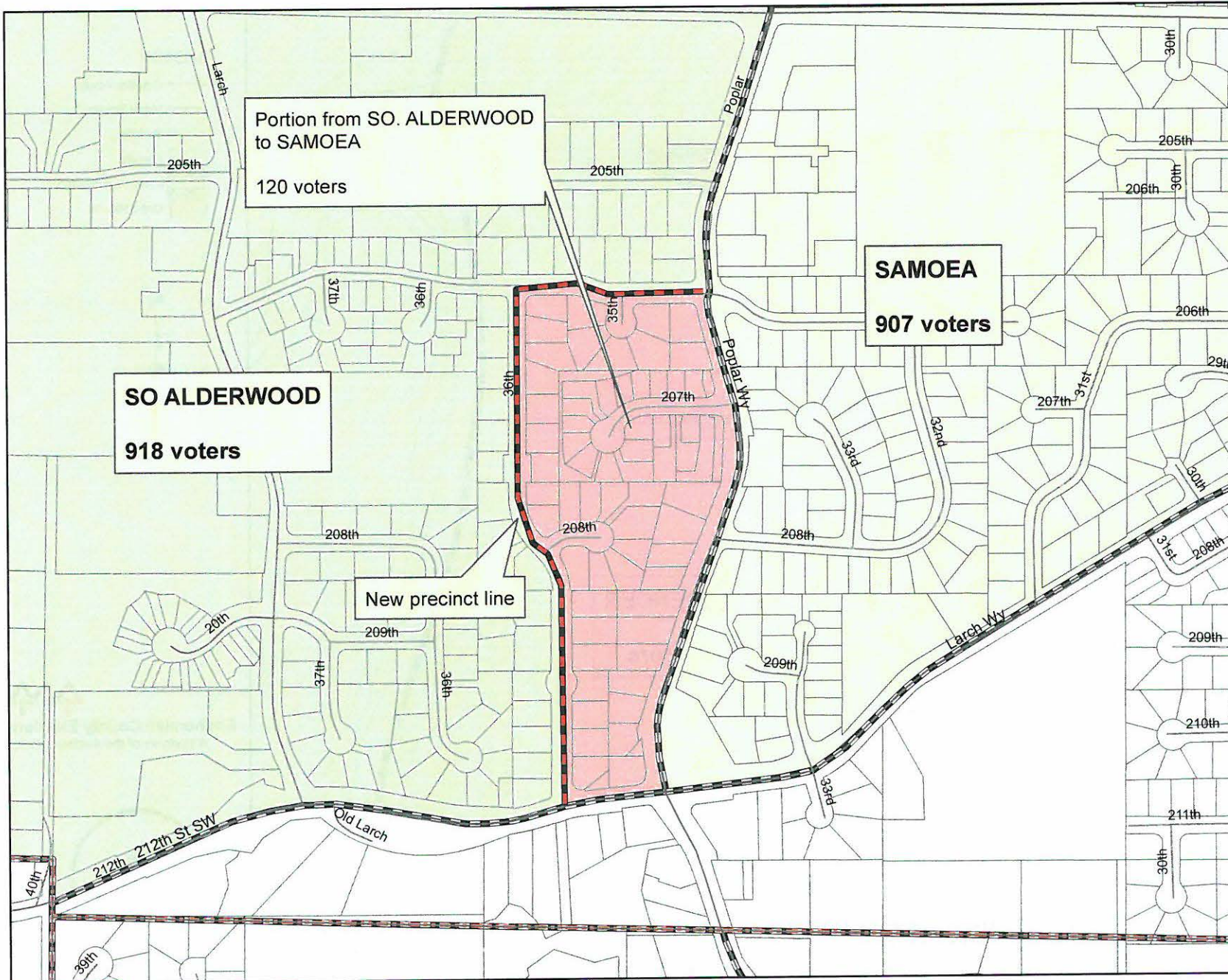
Legend

- City Boundary
- Major Roads
- Streets
- ▭ parcels
- ▭ Precinct Boundary
- ▭ Ord 3506-16



SO. ALDERWOOD to SAMOEA to reduce voter count

(County Council District 3)

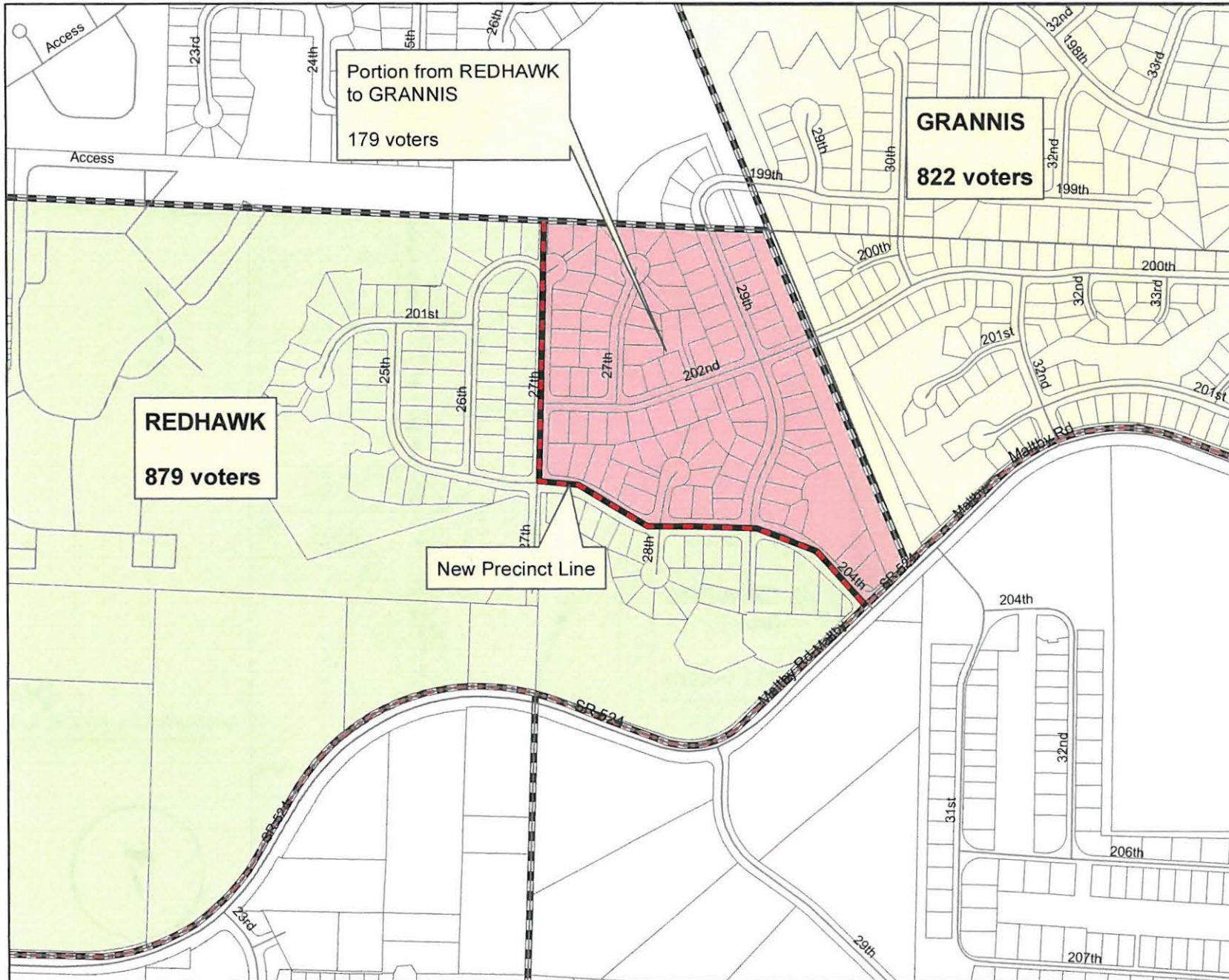


- Legend**
- City Boundary
 - Major Roads
 - Streets
 - parcels
 - Precinct Boundary



REDHAWK to GRANNIS to reduce voter count

(County Council District 4)



- Legend**
- City Boundary
 - Major Roads
 - Streets
 - parcels
 - - - Precinct Boundary



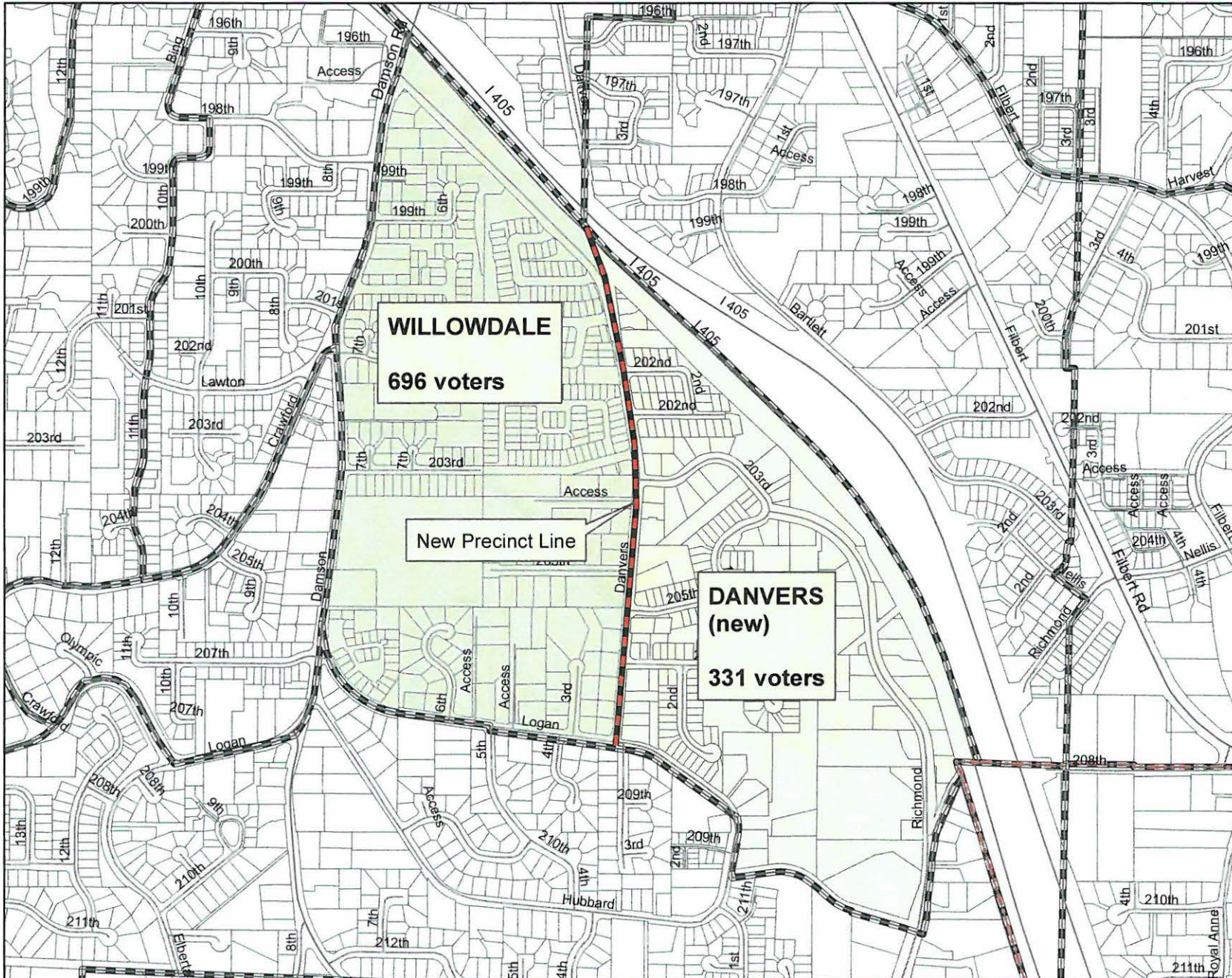

Snohomish County Elections
A Division of the Auditor's Office

6

Map #

WILLOWDALE to DANVERS (new) to reduce voter count

(County Council District 4)



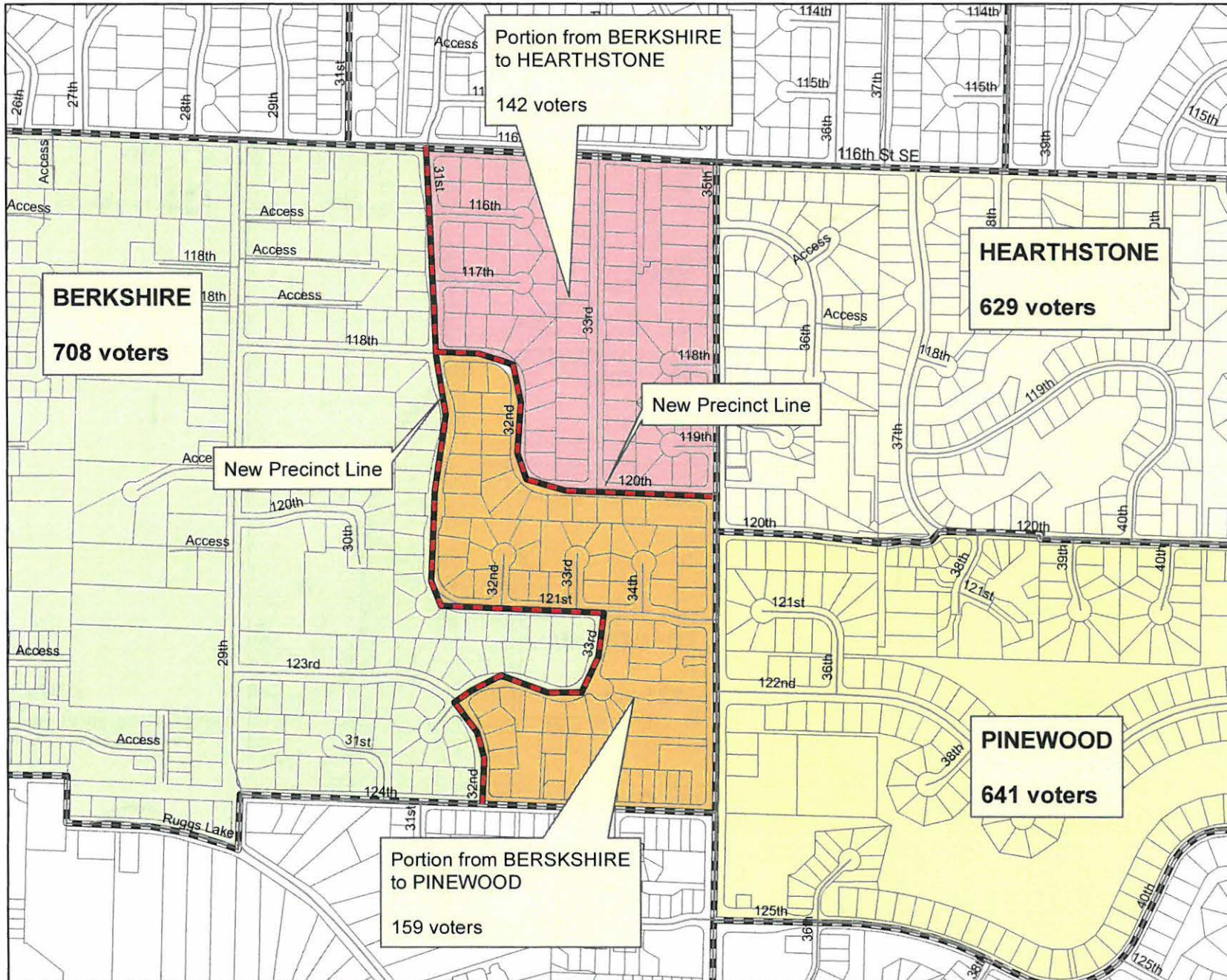
Legend

- City Boundary
- Major Roads
- Streets
- parcels
- Precinct Boundary



BERKSHIRE to HEARTHSTONE & PINEWOOD to reduce voter count

(County Council District 5)

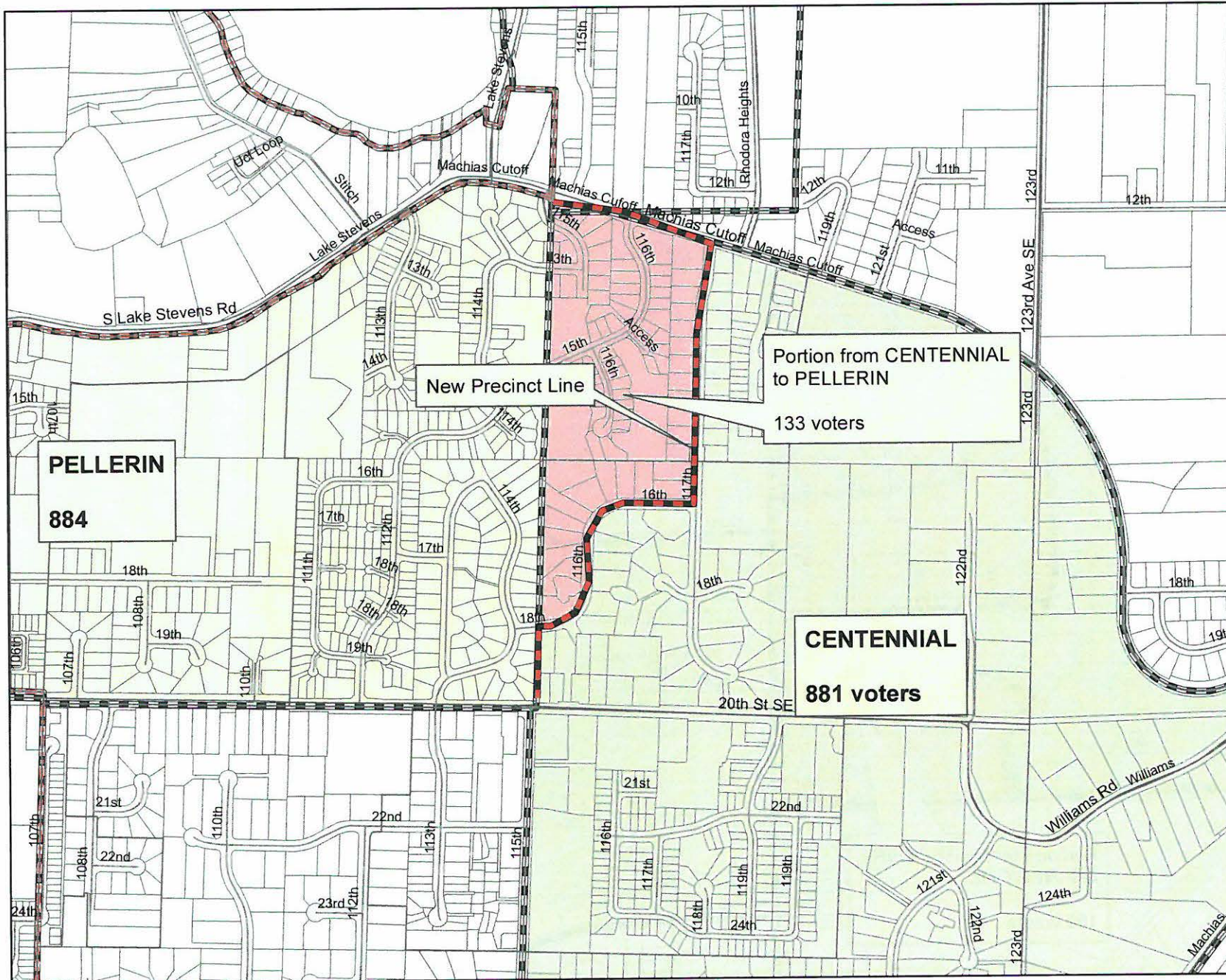


- Legend**
- - - City Boundary
 - Major Roads
 - Streets
 - ▭ parcels
 - ▭ Precinct Boundary



CENTENNIAL to PELLERIN to reduce voter count

(County Council District 5)

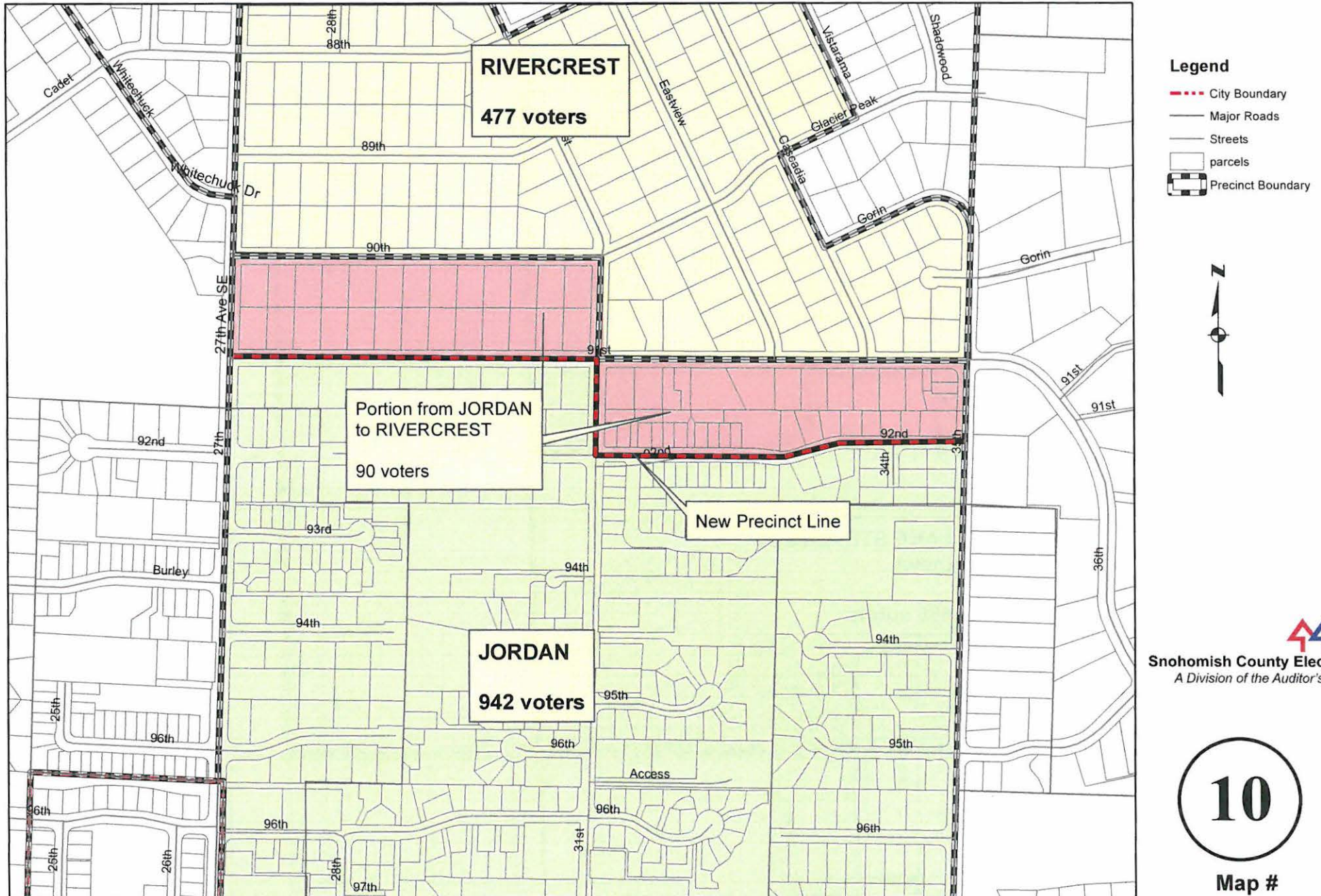


- Legend**
- City Boundary
 - Major Roads
 - Streets
 - parcels
 - Precinct Boundary



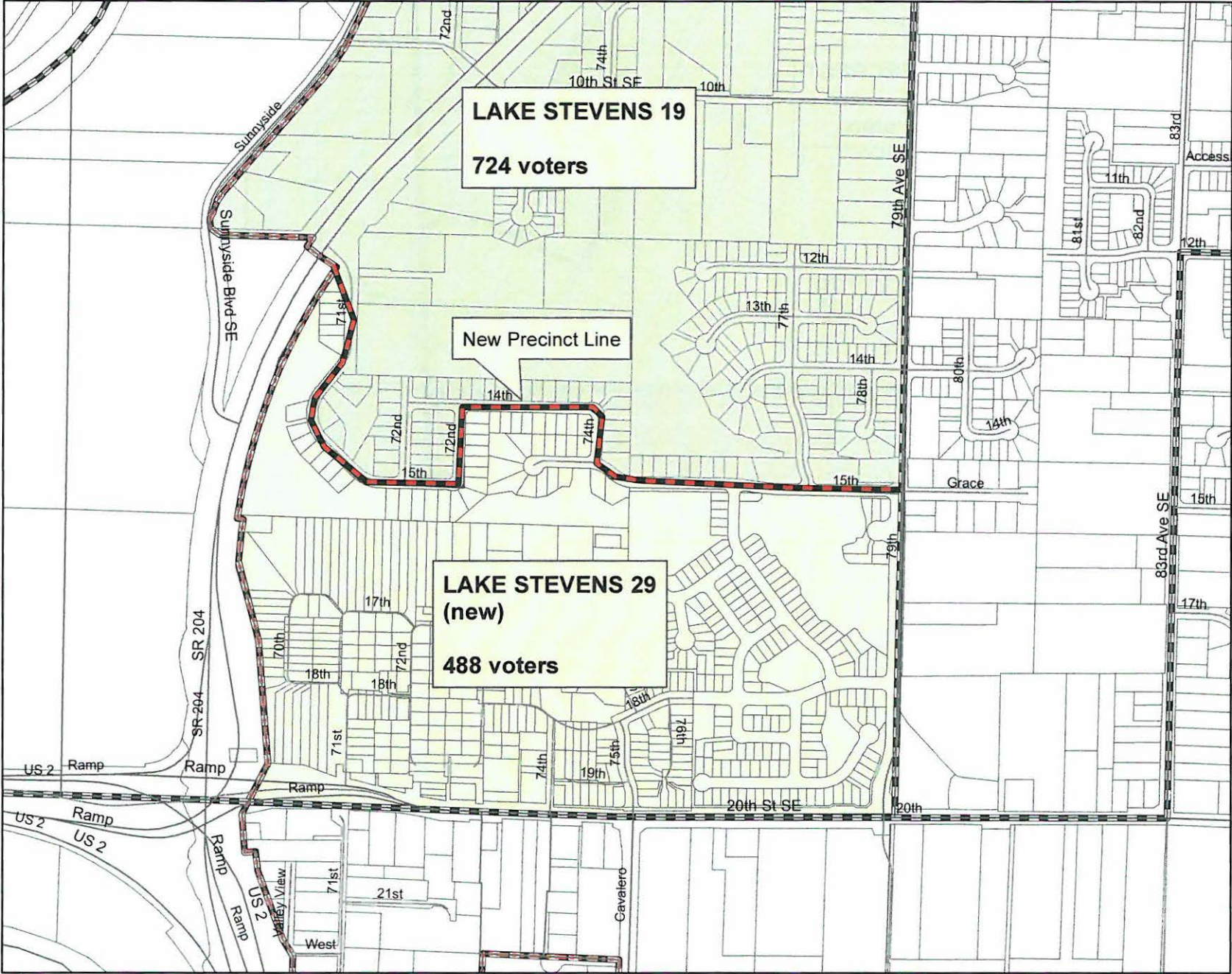
JORDAN to RIVERCREST to reduce voter count

(County Council District 5)



LAKE STEVENS 19 into LAKE STEVENS 29 (new)

(County Council District 5)



- Legend**
- City Boundary
 - Major Roads
 - Streets
 - parcels
 - Precinct Boundary




Snohomish County Elections
A Division of the Auditor's Office

11

Map #