

1 Adopted: October 12, 2016
2 Effective: November 10, 2016

3
4 SNOHOMISH COUNTY COUNCIL
5 SNOHOMISH COUNTY, WASHINGTON

6
7 AMENDED ORDINANCE NO. 16-066

8
9 RELATING TO THE GROWTH MANAGEMENT ACT, AMENDING MAP 4 OPEN SPACE
10 CORRIDORS AND GREENBELT AREAS OF THE GENERAL POLICY PLAN OF THE
11 SNOHOMISH COUNTY GROWTH MANAGEMENT ACT COMPREHENSIVE PLAN
12 (GPP7 – WILDLIFE CORRIDORS)
13

14 WHEREAS, RCW 36.70A.130 directs counties planning under the Growth Management
15 Act (GMA) to consider amendments and revisions to the GMA Comprehensive Plan (GMACP)
16 or development regulations on a regular basis; and
17

18 WHEREAS, the GMA requires the county to identify open space corridors within and
19 between urban growth areas, including lands useful for recreation, wildlife habitat, trails, and
20 connection of critical areas (RCW 36.70A.160); and
21

22 WHEREAS, the County Council (“county council”) has determined that the consideration
23 of the proposed amendments and revisions to the GMACP would promote a county purpose as
24 established under RCW 36.70A.130; and
25

26 WHEREAS, on June 15, 2015, the county council approved, by Amended Motion No.
27 15-226, a list of county-initiated comprehensive plan amendments, including GPP7 – Wildlife
28 Corridors, for inclusion on the list of proposed amendments for final action in 2016; and
29

30 WHEREAS, on March 22, 2016, PDS briefed the Snohomish County Planning
31 Commission (“planning commission”) on the GPP7 – Wildlife Corridors proposal; and
32

33 WHEREAS, on April 26, 2016, the planning commission held a public hearing and
34 received public testimony on the GPP7 – Wildlife Corridors proposal and recommended
35 adoption, as shown in its recommendation letter of June 22, 2016; and
36

37 WHEREAS, on October 12, 2016, the county council held a public hearing after proper
38 notice, and considered public comment and the entire record related to the proposed
39 amendments contained in this ordinance; and
40

41 WHEREAS, following the public hearing, the county council deliberated on the proposed
42 amendments contained in this ordinance;
43

44 NOW, THEREFORE, BE IT ORDAINED:
45

46 Section 1. The county council adopts the following findings in support of this ordinance:
47

48 A. The foregoing recitals are adopted as findings as if set forth fully herein.
49

1 B. This proposal is to amend GMACP Map 4 – Open Space Corridors and Greenbelt Areas
2 and related descriptive text in the Open Space, Shoreline and Scenic Resources section
3 of the Land Use chapter in the GMACP General Policy Plan (GPP).
4

5 C. Procedural requirements.
6

- 7 1. This ordinance is consistent with state law and chapter 30.73 SCC.
- 8
- 9 2. The proposal is a Type 3 legislative action pursuant to SCC 30.73.010.
- 10
- 11 3. The environmental impacts on the proposal are within the range of impacts analyzed
12 by the draft environmental impact statement (DEIS) and final environmental impact
13 statement (FEIS) during the Update to the GMACP in 2015. No new impacts have
14 been identified for this proposal, and State Environmental Policy Act (SEPA)
15 requirements for this non-project action have been met through issuance of
16 Addendum No. 3 to the FEIS for the 2015 Update to the GMACP issued on June 3,
17 2015. Addendum No. 3 was issued on April 22, 2016.
- 18
- 19 4. Pursuant to RCW 36.70A.106(1), a notice of intent to adopt this ordinance was
20 transmitted to the Washington State Department of Commerce for distribution to
21 state agencies on February 25, 2016.
- 22
- 23 5. The public participation process used in the adoption of this ordinance has complied
24 with all applicable requirements of the GMA and the SCC.
- 25
- 26 6. The Washington State Attorney General last issued an advisory memorandum, as
27 required by RCW 36.70A.370, in December of 2015 entitled “Advisory Memorandum:
28 Avoiding Unconstitutional Takings of Private Property” to help local governments
29 avoid the unconstitutional taking of private property. The process outlined in the
30 State Attorney General’s 2015 advisory memorandum was used by Snohomish
31 County in objectively evaluating the regulatory changes proposed by this ordinance.
32

33 D. This ordinance is consistent with the record.
34

- 35 1. During the most recent major update of the county’s Growth Management Act
36 Comprehensive Plan (GMACP), the planning commission recommended that the
37 county council direct further work addressing wildlife habitat networks in the
38 comprehensive plan.
- 39
- 40 2. In response to the planning commission’s recommendation, the county council
41 included GPP7 in Amended Motion 15-226 to amend Map 4 - Open Space Corridors
42 and Greenbelt Areas, to include wildlife habitat corridors and networks.
- 43
- 44 3. The GPP7 proposal would revise the GMACP Map 4 - Open Space Corridors and
45 Greenbelt Areas adding wildlife habitat data from the Washington State Department
46 of Fish and Wildlife and revising the map title to “Map 4 – Open Space Corridors and
47 Wildlife Areas” to reflect the new map content.
48

- 1 4. The GPP7 proposal would also revise text in the GMACP General Policy Plan (GPP)
2 specifically related to the description of Map 4 - Open Space Corridors and
3 Greenbelt Areas.
4
- 5 5. The GPP7 proposal would not affect county regulations because Map 4 is produced
6 for informational purposes only and is non-regulatory.
7
- 8 6. No inconsistencies between the proposed amendments and the GPP plan elements
9 or development regulations have been identified.
10
- 11 E. This proposal complies with the GMA and was analyzed and found to be consistent with
12 the following GMA statutes:
13
- 14 1. The GPP7 proposal is consistent with the GMA requirements to “Retain open space,
15 enhance recreational opportunities, conserve fish and wildlife habitat, increase access
16 to natural resource lands and water, and develop parks and recreation facilities” (RCW
17 36.70A.020).
18
- 19 2. The GPP7 proposal is consistent with the GMA requirements in RCW 36.70A.160 to
20 identify open space corridors within and between urban growth areas, including lands
21 useful for recreation, wildlife habitat, trails, and connection of critical areas.
22
- 23 F. This proposal is consistent with the Puget Sound Regional Council Vision 2040
24 Multicounty Planning Policies (MPPs), in particular the following policies:
25
- 26 1. MPP-EN-8 to identify, preserve, and enhance significant regional open space
27 networks and linkages across jurisdictional boundaries; and
28
- 29 2. MPP-En-11 to identify and protect wildlife corridors both inside and outside the
30 urban growth area.
31
- 32 G. This proposal is consistent with the Countywide Planning Policies (CPP), in particular
33 the following policies:
34
- 35 1. CPP Env-2 to identify, designate, and protect regional open space networks/wildlife
36 corridors both inside and outside the Urban Growth Area. Jurisdictions should
37 establish policies and coordinated approaches to preserve and enhance these
38 networks/corridors across jurisdictional boundaries; and
39
- 40 2. CPP Env-3 to identify and protect, enhance, or restore wildlife corridors and
41 important habitat areas that support designated species of local or state significance
42 and that are critical for survival of endangered or threatened species.
43
- 44 H. The GPP7 proposal is consistent with the GPP, in particular LU Goal 10, LU Objective
45 10.A and LU Policy 10.A.1 to identify and protect open space and preserve an integrated
46 open space network, and NE Policy 3.B.2 to maintain a fish and wildlife corridor map for
47 critical habitat.
48

1
2 Section 2. The county council makes the following conclusions:
3

4 A. The amendments are consistent with and comply with the procedural and substantive
5 requirements of the GMA.
6

7 B. The amendments are consistent with and comply with the MPP, CPP, and goals,
8 objectives and policies of the GMACP.
9

10 C. All SEPA requirements with respect to this non-project action have been satisfied.
11

12 D. This proposal does not result in an unconstitutional taking of private property for a public
13 purpose and does not violate substantive due process guarantees.
14

15 Section 3. The county council bases its findings and conclusions on the entire record of the
16 planning commission and the county council, including all testimony and exhibits. Any finding
17 which should be deemed a conclusion, and any conclusion which should be deemed a finding, is
18 hereby adopted as such.
19

20 Section 4. The Land Use chapter of the GPP, last amended by Ordinance No.15-105 on
21 February 3, 2016, is amended as indicated in Exhibit A, which is attached hereto and
22 incorporated by reference into this ordinance.
23

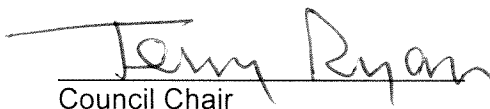
24 Section 5. Map 4 – Open Space Corridors and Greenbelt Areas of the GPP, last amended
25 by Amended Ordinance No.14-129 on June 10, 2015, is amended as indicated in Exhibit B,
26 which is attached hereto and incorporated by reference into this ordinance.
27

28 Section 6. The county council directs the Code Reviser to update SCC 30.10.060 pursuant
29 to SCC 1.02.020(3).
30

31 Section 7. Severability and Savings. If any section, sentence, clause or phrase of this
32 ordinance shall be held to be invalid by the Growth Management Hearings Board, or
33 unconstitutional by a court of competent jurisdiction, such invalidity or unconstitutionality shall not
34 affect the validity or constitutionality of any other section, sentence, clause or phrase of this
35 ordinance. Provided, however, that if any section, sentence, clause or phrase of this ordinance
36 is held to be invalid by the Board or court of competent jurisdiction, then the section, sentence,
37 clause or phrase in effect prior to the effective date of this ordinance shall be in full force and
38 effect for that individual section, sentence, clause or phrase as if this ordinance had never been
39 adopted.
40

41 PASSED this 12th day of October, 2016.
42

43 SNOHOMISH COUNTY COUNCIL
44 Snohomish County, Washington
45

46 
47
48 Council Chair
49

1
2
3
4
5
6
7
8
9
10
11
12
13
14
15
16
17
18
19
20
21
22
23
24
25
26
27
28
29
30
31
32
33
34
35
36
37
38
39
40
41
42
43
44
45
46
47

ATTEST:


Clerk of the Council

- APPROVED
- EMERGENCY
- VETOED

DATE: 10/31/16, 2016


Snohomish County Executive

ATTEST:


Deputy Prosecuting Attorney

Approved as to form only:

Deputy Prosecuting Attorney

D-10

Exhibit A
Amended Ordinance No. 16-066
GPP7 – Wildlife Corridors
Amendments to the Land Use Chapter of the GPP

Open Space, Shoreline and Scenic Resources

Open space is defined as any parcel or area of land that remains essentially unimproved and which may be devoted to or used for public or private use or enjoyment, or the protection of environmentally sensitive areas. Open space includes a wide variety of lands with many types of uses that can support an open space function as a partial or supplemental use. Examples include publicly owned lands and parks useful for either active or passive recreation, schools, water bodies, utility corridors, fish and wildlife conservation areas and other types of critical areas, trails, resource lands, cemeteries, and scenic or open space easements on private land.

The GMA establishes the following planning goal (9) concerning open space and resource lands: Retain open space, enhance recreational opportunities, conserve fish and wildlife habitat, increase access to natural resource lands and water, and develop parks and recreation facilities.

The GMA also requires the county to identify open space corridors within and between urban growth areas. The open space corridors are to include lands useful for recreation, wildlife habitat, trails, and connection of critical areas. In urban areas, open space provides relief from intense urban land uses. Open space needs must be balanced with other land uses in urban planning.

The Open Space ~~((Corridor/Greenbelt))~~ Corridors and Wildlife Areas Map (Map 4 in the map portfolio and described in the Open Space ~~((Corridor/Greenbelt))~~ Corridors

and Wildlife Areas map section of this plan) depicts a ~~((county-wide))~~ countywide open space network.

Multi-county policies have been adopted by the Puget Sound Regional Council which place emphasis on funding countywide networks of permanent urban and rural open space. Other multi-county policies require planning for open space areas and corridors of regional significance.

The multi-county policies also call for regulatory and acquisition programs to protect scenic resources of unique or outstanding value.

~~((In 2001, the county completed the Southwest UGA GreenSpace Project. This report, developed with the assistance of representatives from throughout the Southwest UGA, identified funding strategies for preserving open space. This document is advisory and can provide a resource for policy decisions on incentives to encourage the preservation of open spaces in the Southwest UGA.))~~

Other documents which may also provide guidance in determining open space corridors are WRIA plans, Critical Areas maps, and the Parks and Recreation Plan. The latter document provides implementation measures to meet GMA goal 9.

It is important to note that not all open space areas are mapped – i.e., small forest lots, cemeteries, archeological sites, small critical areas or land preserved as buffer in a development agreement.

Exhibit A
Amended Ordinance No. 16-066
GPP7 – Wildlife Corridors
Amendments to the Land Use Chapter of the GPP

GOAL LU 10 Identify and protect open space, natural and scenic resources and shoreline areas.

Objective LU 10.A Identify and preserve an integrated open space

LU Policies 10.A.1 The county shall consider the following features for inclusion in an open space system:

- (a) natural or scenic resource areas;
- (b) water supply protection areas (public watersheds) and natural drainage easements;
- (c) urban and rural landscaped areas, such as public or private golf courses, public or private school yards, cemeteries, active parks and arboretums;
- (d) public and private low intensity park and recreation sites such as wildlife preserves, nature reservations, sanctuaries, or hiking, equestrian and biking trails;
- (e) land reserved as open space or buffer as part of development;
- (f) cultural, archaeological, geologic, and historic sites;
- (g) major multi-functional river corridors (Snoqualmie, Snohomish, Skykomish and Stillaguamish valleys) and other water bodies including Puget Sound, major lakes, and major tributaries;
- (h) linear open space such as utility and trail corridors;
- (i) land designated open space under the Open Space General Criteria established according to SCC 4.28.040 for tax assessment purposes;
- (j) lands that link existing open space and recreation areas; and
- (k) lands that form open space corridors within and between urban growth areas.

Objective LU 10.B Develop plans and techniques to preserve open space and scenic resources.

LU Policies 10.B.1 The county shall use a variety of land development techniques to preserve and maintain open space corridors that define urban growth boundaries and provide separation between communities, and between urban and rural areas where feasible.

Exhibit A
Amended Ordinance No. 16-066
GPP7 – Wildlife Corridors
Amendments to the Land Use Chapter of the GPP

- 10.B.2 The county shall consider various land acquisition techniques in the development of cooperative management plans and implementation strategies for open space areas of inter-jurisdictional significance.
- 10.B.3 The county shall pursue joint ventures with cities, school districts, and private land developers to exploit joint use opportunities for open space and recreation.
- 10.B.4 The county shall work with cities to create an integrated system of passive and active parks, open spaces, and trails in areas which are accessible to all residents of the county and cities, and provide for a variety of recreational activities, and contribute to neighborhood or community identity.
- 10.B.5 The county shall work cooperatively with public and private groups to identify, protect, and enhance open space areas and corridors of regional significance, such as the Stevens Pass Greenway.
- 10.B.6 The county shall integrate open space planning and the protection of scenic resources with innovative programs, such as purchase or transfer of development rights, cluster development, open space tax assessment, and acquisition of easements.
- 10.B.7 The county shall consider development of code and site design standards that encourage the preservation of natural and scenic resources.
- 10.B.8 The county shall consider creating a county parks and open space zone that could be applied to county-owned parks and open space properties that are to be conserved in perpetuity.
- 10.B.9 The county shall establish conservation easements for county-owned parks and open space properties that are to be conserved in perpetuity.
- 10.B.10 The county shall preserve environmentally sensitive areas of the county Cathcart site in accordance with the adopted “Critical Areas Regulations.” The county will also enhance, as appropriate, and promote sensitive areas as site amenities to potential developer-partners, residents and business tenants at the Cathcart site.

Objective LU 10.C Preserve and enhance public access and recreational opportunities through the Shoreline Master Program. See Shoreline Master Program for Goals and Policies related to areas of Snohomish County subject to the Shoreline Management Act.

Exhibit A
Amended Ordinance No. 16-066
GPP7 – Wildlife Corridors
Amendments to the Land Use Chapter of the GPP

Future Land Use Map

Interpreting the Future Land Use Map

The Future Land Use Map (FLUM) provides generalized urban and rural residential, commercial, and industrial land use designations.

The map includes urban growth area (UGA) boundaries and specific designations of urban, rural, and resource land uses.

Implementing Zoning

The appropriate implementing zoning classifications for the FLUM designations are identified in the following subsections.

The county completed areawide rezones in rural areas to make the zoning map consistent with the rural plan designations and their density and lot size requirements. Within urban residential plan designations, the county will continue to adopt zoning to ensure consistency with future land use map designations. Property owners may individually request rezones to higher urban residential densities consistent with the GPP policies and the GPP Future Land Use Map. Within UGAs, implementing zoning may be further limited in the designations described below.

Forestry and Recreation (F & R) is not identified as an implementing zone within the applicable General Policy Plan designations. Property owners may request this zoning classification, and their requests will be considered as provided for under existing policies and regulations.

Mineral Conservation (MC) zone is not identified as an implementing zone for any FLUM designations. Properties already zoned MC may develop as provided for under applicable GPP policies and Title [30 SCC](#).

URBAN PLAN DESIGNATIONS

Urban Residential Designations

These designations encompass residential lands within the unincorporated UGA and

are intended to provide for urban housing opportunities. The density ranges are defined by zoning classifications that implement the FLUM. The allowable density for a development will be determined by the provisions of Title [30 SCC](#), except that the minimum density in UGAs may not be less than four dwelling units per net acre except as specified in Policy [LU 2.A.1](#).

Urban Low Density Residential (ULDR: three dwelling units per acre). This designation allows detached housing developments on larger lot sizes. This designation is applied only in the Darrington and Gold Bar Urban Growth Areas due to the absence of sanitary sewers. Implementing zones: R-20,000 and R-12,500.

Urban Low Density Residential (ULDR). This designation allows mostly detached housing developments on larger lot sizes. Implementing zones: MHP, R-7,200, PRD-7,200, R-8,400, PRD-8,400, R-9,600, PRD-9,600 and WFB. Except within the Lake Stevens UGA, areas containing critical

Exhibit A
Amended Ordinance No. 16-066
GPP7 – Wildlife Corridors
Amendments to the Land Use Chapter of the GPP

areas that are large in scope, with a high rank order value, and are complex in structure and function, the implementing zoning shall be R-9,600.

Urban Medium Density Residential (UMDR). This designation allows a combination of detached homes on small lots, townhouses, and apartments in medium density, multi-family residential developments. Implementing zones: MHP, LDMR, PRD-LDMR, Townhouse, R-7,200, PRD-7,200 and WFB.

Urban High Density Residential (UHDR). This designation allows high density residential land uses such as townhouses and apartments generally near other high intensity land uses. Implementing zones: MHP, MR, PRD-MR, LDMR, and PRD-LDMR.

Supplemental Designations of ULDR Areas (Map 6)

Map 6 provides additional detail regarding allowed residential densities within the Urban Low Density Residential plan designation for the Mill Creek and Lake Stevens UGAs. Within these UGAs, implementing zoning shall be limited in the designations described below.

Lake Stevens Urban Low Density Residential – Limited (ULDR-L (4)): Four dwelling units per acre. Like the ULDR designation, the ULDR-L (4) designation allows mostly detached housing development on larger lot sizes in the Lake Stevens UGA. This designation is applied to areas along South Lake Stevens Road, north of Lake 205 and southeast of the intersection of 131st Avenue NE and 16th St NE. The implementing zoning in these areas is

confined to the lowest density urban zones because of environmental constraints and difficulties in providing urban services. Implementing zones: include R-9,600 and R-20,000.

Lake Stevens Urban Low Density Residential – Limited (ULDR-L (6)): Six dwelling units per acre. The ULDR-L (6) designation allows mostly detached housing development on larger lot sizes. It is applied to most of the non-constrained ULDR land in the Lake Stevens UGA. Land in this category may be developed at a density of six dwelling units per acre. Implementing zones: include R-7,200 and PRD-7,200.

Mill Creek East Urban Low Density Residential – Limited (ULDR-L (6)): Six dwelling units per acre. The area designated ULDR (6) is located south of Seattle Hill Road, east of 35th Avenue SE, north of the Seattle City Light utility corridor and west of the Village Center/Urban Center designation. This area is relatively free of existing development, with the exception of scattered single-family residences, one single-family plat and a mobile home park. It is located adjacent to an existing transit route on 35th Avenue SE, and generally consists of large parcels. Although the Tambark Creek riparian corridor divides this area, the area east of the corridor is directly adjacent to higher densities within the Urban Village designation, where single-family development at slightly higher densities will complement the urban village. The area west of the riparian corridor is directly adjacent to the transit route on 35th Avenue SE, and has enough contiguous undeveloped area to ensure that future development will have consistent densities. The existing manufactured home park would provide a well-established, compatible alternative to

Exhibit A
Amended Ordinance No. 16-066
GPP7 – Wildlife Corridors
Amendments to the Land Use Chapter of the GPP

single family housing in this area.
Implementing zone: R-7,200.

Commercial and Industrial Designations

The Urban Commercial (UC) and Urban Industrial (UI) designations of the GPP provide for a wide range of implementing zones and, in some cases, provide specific locational criteria or recommendations as to how the zones should be applied within the designation.

Urban Commercial (UC). This designation identifies commercial designations within the UGA which allow a wide range of commercial as well as residential uses. Implementing zones: Neighborhood Business, Planned Community Business, Community Business, General Commercial, Freeway Service and Business Park. In the Southwest County UGA, no rezones to General Commercial shall be approved outside of the State Route 99 corridor.

Urban Industrial (UI). This designation identifies industrial and manufacturing areas in UGAs. Implementing zones: Business Park, Light Industrial, Heavy Industrial and Industrial Park. In the Lake Stevens UGA, the implementing zoning is limited to Business Park and Heavy Industrial and in the Snohomish UGA, the implementing zoning is limited to Business Park and Industrial Park.

CENTER DESIGNATIONS

The Future Land Use Map identifies the specific locations for Urban Centers, Transit Pedestrian Villages, Urban Villages and Manufacturing and Industrial Centers.

Additional centers may be designated in the future through amendments to the comprehensive plan.

Urban Center.

This designation identifies a higher density area that contains a mix of residential and non-residential uses, and whose location and development are coordinated with the regional high capacity transportation system. The implementing zone is Urban Center.

Transit Pedestrian Village.

This designation identifies a compact, walkable area around an existing or planned high capacity transit station. The county shall prepare and adopt a conceptual or master plan showing how the area could enhance and support the high capacity transit station. The implementing zone is Urban Center.

Urban Village.

This designation identifies a mixed-use area with higher density residential development located within neighborhoods. Urban Villages are smaller than Urban Centers. The implementing zones are Neighborhood Business and Planned Community Business.

Manufacturing/Industrial Center (MIC).

This overlay identifies the unincorporated portion of major regionally-designated employment areas. MICs are intended to include intensive, concentrated manufacturing and industrial land uses which are not easily mixed with other uses. Notwithstanding the Vision 2040 guidelines for MIC designations, land uses and zoning of Paine Field continue to be governed by

Exhibit A
Amended Ordinance No. 16-066
GPP7 – Wildlife Corridors
Amendments to the Land Use Chapter of the GPP

the Snohomish County Airport Paine Field Master Plan and Title 30 SCC consistent with federal aviation policies and grant obligations.

OTHER URBAN DESIGNATIONS

Public/Institutional Use (P/IU).

The Public/Institutional Use designation can be applied to existing or planned public and privately owned and/or operated properties including churches, schools, parks, government buildings, utility plants and other government operations or properties within UGAs or adjacent to UGAs. The P/IU designation can be applied to existing areas within a UGA, as well as areas being added to a UGA concurrent with a re-designation to P/IU. When applying the P/IU designation, the following requirements apply:

(1) Use of P/IU designation for existing areas within a UGA. The P/IU designation is appropriate for existing or planned government owned and/or operated properties, including schools, parks, government buildings, utility plants, and other government operations or properties as requested. There are no specific implementing zones for this designation since zoning will vary from site to site. However, only zones that allow schools, parks, government buildings, utility plants or other government operations either outright or conditionally may implement this designation. Implementing zoning should be consistent with surrounding zones. When a school district surpluses property that was in the UGA before it was designated P/IU and notifies the county that the school district no longer needs the land for school district purposes, the designation should be changed

to a designation corresponding to the underlying zone as a technical correction in the next comprehensive plan update cycle.

(2) Use of P/IU designation in conjunction with a UGA expansion. All residential, commercial, or industrial UGA expansions are subject to the requirements of LU 1.A.10. Institutional UGA expansions are allowed subject to the requirements of LU 1.A.10, provided that the land added to a UGA is designated P/IU concurrent with or prior to the UGA expansion. Subsequent re-designations of land added to a UGA under the P/IU designation are subject to the applicable requirements of LU 1.A.10 for residential, commercial, or industrial UGA expansions. Where land added to a UGA is designated P/IU, the implementing zone will be R-7,200, R-8,400, or R-9,600. When applied to land designated P/IU concurrent with or prior to a UGA expansion, these implementing zones shall allow only churches, schools, parks, government buildings, utility plants and other government operations or properties unless the land is re-designated to urban commercial, residential, or industrial in compliance with the UGA expansion requirements of LU 1.A.10.

Urban Horticulture (UH).

This designation is intended for low density, low impact, non-residential land uses adjacent to agricultural areas that do not require extensive structures or development. Examples of UH uses include agricultural operations, sales of farm products, and sales of landscape materials. Implementing zoning for areas designated UH is Agriculture-10 acre.

Overlapping Designations.

Exhibit A
Amended Ordinance No. 16-066
GPP7 – Wildlife Corridors
Amendments to the Land Use Chapter of the GPP

There may be sites within the UGA where more than one land use designation is appropriate to permit a greater range of potential implementing zones. In particular, some sites meeting the criteria enumerated in Policy [LU 2.C.1](#) may be appropriately developed or redeveloped for a land use permitted in the implementing zones for either designation. In these situations, the county may utilize overlapping land use designations for particular sites or areas on the Future Land Use Map. On sites having overlapping land use designations, a change of zoning from an implementing zone in one designation to an implementing zone in the other designation may be requested through a rezone application without the need for a comprehensive plan amendment.

PLAN DESIGNATIONS UNIQUE TO THE TULALIP RESERVATION

Reservation Commercial (RC).

This designation identifies a unique commercial designation that is limited only to fee-simple lands under county jurisdiction that are located within the exterior boundaries of the Tulalip Reservation in an area bordered on the west and north by Quilceda Creek, on the south by Ebey Slough and on the east by Interstate 5. This area of the reservation is served by urban infrastructure including public sewer and water and contains existing urban development under county and Tulalip Tribes jurisdiction. The implementing zone for new development on vacant or under-utilized property designated Reservation Commercial is General Commercial, subject to approval of an official site plan according to the requirements of chapter [30.31B](#) SCC.

Local Forest (LF).

This designation includes productive fee simple forest lands which are an integral part of the Tulalip Tribes' designated forest lands and are intended to contribute to the preservation of a large contiguous area of land within the interior of the Tulalip Reservation for management of sustainable natural resources. Local Forest lands and adjacent tribal forest lands collectively provide timber production, surface and ground water resources, fisheries and wildlife habitat, and recreation opportunities. The Local Forest designation provides landowners a means of residing on their property while providing protection from rural residential activities that could conflict with forest practice operations. The implementing zone for the Local Forest designation is the Forestry (F) zone (one dwelling unit per 20 or more acres). The rural cluster subdivision technique may be used in the Forestry zone.

RURAL PLAN DESIGNATIONS

Rural Residential Designations

These designations encompass residential land outside of UGAs and are intended to provide rural housing opportunities while preserving the rural character of these lands. Land in the six rural residential designations may be served by public water supplies but development may not be connected to sanitary sewers except for necessary public facilities or when public health emergencies exist.

Low Density Rural Residential (LDRR: one dwelling unit per 20 acres). This designation includes lands that have been zoned Forestry but are not designated as Commercial Forest Land in the GPP. This designation is intended to be a partial basis for a future

Exhibit A
Amended Ordinance No. 16-066
GPP7 – Wildlife Corridors
Amendments to the Land Use Chapter of the GPP

Rural Resource Transition designation which could provide for transition areas between rural residential lands and natural resource lands of long-term commercial significance. Future GPP amendments will determine the feasibility of such a designation as well as its extent and future minimum lot size requirements. The existing Forestry zone will continue to remain in place until any GPP amendments and implementing regulations for this designation are adopted.

Rural Residential-10 (Resource Transition) (RR-10-RT: one dwelling unit per 10 or more acres). This designation includes lands which were included in Forestry designations on pre-GMA subarea plans but not zoned Forestry and includes: (1) lands on the Tulalip Reservation adjacent to or in close proximity to lands designated for forestry or agriculture use by the GPP and the Tulalip Tribes' Comprehensive Plan, and (2) lands adjacent to the estuary of Quilceda Creek. The implementing zone is the RRT-10 zone.

Existing zones within this designation, except where located on the Tulalip Reservation, may remain, but zoning regulations shall limit the minimum lot size in new subdivisions within this designation to 10 acres with an option for using the rural cluster subdivision technique. On the Tulalip Reservation only, lands designated RR-10-RT are zoned RRT-10. The RRT-10 zone requires a minimum lot size of 10 acres for each house in a new subdivision. The rural cluster subdivision technique may be used in the RRT-10 zone.

Rural Residential-10 (RR-10: one dwelling unit per 10 or more acres). This designation includes lands which have been previously

designated agriculture in pre-GMA subarea comprehensive plans or zoned Agriculture-10 Acre. The existing Agricultural-10 Acre zone will continue to remain in place until the GPP is amended in the future and implementing regulations for this designation are adopted.

This category provides for an alternative rural lot size and possible set of uses which can accommodate a wider variety of rural uses and lots, be used where hazardous and critical areas require lower density and be applied as a transition category between resource lands/critical areas and rural residential/urban areas.

Rural Residential-5 (RR-5: one dwelling unit per five or more acres). This designation includes lands that were designated Rural on pre-GMA subarea comprehensive plans and zoned Rural 5. As the result of a joint planning effort between the county and the Tulalip Tribes, the RR-5 designation also applies to certain lands on the Tulalip Reservation that were previously designated Rural Residential. The implementing zone in this designation will continue to be the R-5 zone.

Rural Residential (RR: Base density of one dwelling unit per five or more acres). This designation includes lands which were designated as Rural or Residential Estates on pre-GMA subarea comprehensive plans. The implementing zones within this designation are the Rural-5 Acre zone and other zones with a minimum lot size requirement larger than five acres.

Rural Residential RD (RR-RD: one dwelling unit per five or more acres). This designation applies only to the rural residential areas that were designated as Rural Diversification in

Exhibit A
Amended Ordinance No. 16-066
GPP7 – Wildlife Corridors
Amendments to the Land Use Chapter of the GPP

the pre-GMA Darrington Area Comprehensive Plan. This designation will continue to allow a mix of rural residential housing and small home-based, rural industrial/commercial uses. The implementing zone is the Rural Diversification zone.

RURAL COMMERCIAL AND INDUSTRIAL DESIGNATIONS

Clearview Rural Commercial (CRC).

This designation generally allows for neighborhood, community, and rural commercial uses including, but not limited to, small grocery stores, restaurants, service stations, hardware stores, art galleries, antique stores, and nurseries to serve the needs of the rural population. The implementing zone within the Clearview Rural Commercial designation consistent with [LU 6.H.6](#) and [LU 6.H.7](#) is the Clearview Rural Commercial zone.

Rural Freeway Service (RFS).

This designation includes land that has previously been designated or zoned as Rural Commercial land at the rural Interstate 5 interchanges in north Snohomish County. The designation and implementing zones require rural development standards that make rural freeway service development compatible with adjacent rural residential uses.

Rural Industrial (RI).

This designation includes existing industrial zones and industrial plan designations on subarea comprehensive plan maps in rural areas. These designations allow rural industries which need locations close to the

natural resources in rural areas. They are located in areas where urban services, particularly sanitary sewers, will not be provided. The designation is implemented through GPP policies and Title [30](#) SCC to ensure industrial development is compatible with surrounding rural residential land uses.

RESOURCE PLAN DESIGNATIONS

Agricultural Designations.

The designations listed below include land primarily devoted to the commercial production of horticultural, viticultural, floricultural, dairy, apiary, vegetable, fruit, or animal products. These designations were based on the Interim Agricultural Conservation Plan.

Local Commercial Farmland (LCF). This designation includes farmland areas outside of the floodplain or shoreline areas which are generally characterized by a mixture of prime farmland and other soils as defined by the Soils Conservation Service.

Upland Commercial Farmland (UCF). This designation includes farmland areas on the Tulalip Reservation and outside of the floodplain or shoreline area and is generally characterized by having nearly continuous prime farmland soils and more than 50 percent of the land area in parcels of 10 acres or larger. New subdivisions in this designation may not create lots smaller than 10 acres. The UCF designation also provides protection for the drainage basin of the West Fork of Quilceda Creek within the Tulalip Reservation. The Agricultural-10 Acre (A-10) zone is the implementing zone for the UCF designation.

Exhibit A
Amended Ordinance No. 16-066
GPP7 – Wildlife Corridors
Amendments to the Land Use Chapter of the GPP

Riverway Commercial Farmland (RCF). This designation includes farmland areas generally characterized by being in a river valley, floodplain or shoreline area, having continuous prime farmland soils, and having approximately 50 percent or more of the land area in parcels of 40 acres and larger. The Agricultural-10 Acre zone is the implementing zone.

Recreational Land (RL). This designation applies only to lands designated Recreational Land in accordance with RCW [36.70A.170\(1\)](#). The designation is implemented through Title [30 SCC](#) and ensures the recreational use does not affect surrounding agricultural lands of long term commercial significance designated under [36.70A.170\(1\)](#). The implementing zone is the Agricultural-10 Acre (A-10) zone.

Forest Land Designations.

The designations listed below include state and private forest lands. These designations are based on the Interim Forest Land Conservation Plan and the Forest Advisory Committee Findings and Conclusions on the Designation of Commercial Forest Lands, January 5, 1995. The text of these documents is incorporated into this document by reference. Designated Commercial Forest lands within the Mt. Baker-Snoqualmie National Forest and other selected forest lands will be further evaluated for their ability to meet the criteria described in Policy [8.A.2](#) and the county's GMA Comprehensive Plan Future Land Use Map will be amended as necessary.

Commercial Forest (CF). This designation includes primarily large forest land tracts that may not be subdivided for residential development. This designation also includes

smaller forest land tracts that are permanently protected from residential development through the Transfer of Development Rights program. These lands may be segregated only into tracts of 80 acres or larger. The Forestry zone is the implementing zone for this designation.

Forest Transition Area (CF-FTA). This designation is an overlay to the Commercial Forest (CF) designation. The FTA consists of a one quarter mile wide band of Commercial Forest land on the edge of the Commercial Forest Land designation bordering non-resource lands but it does not apply to forest lands that are permanently protected from residential development through the Transfer of Development Rights program. The use of FTA lands is the same as Commercial Forest lands, unless adjacent land uses prevent normal forest practices, in which case limited low density development options also apply.

Mineral Resource Overlay (M) (Map 2).

This designation is an overlay to the Future Land Use Map. Designated Mineral Resource Lands include those lands identified through a comprehensive inventory and assessment process as not being characterized by urban growth and as having long-term significance for the extraction of minerals. The designation includes bedrock, sand/gravel and precious metals mineral resources. The implementing zone in this designation is dependent on the underlying zone.

OTHER GMA COMPREHENSIVE PLAN MAPS OR OVERLAYS

Municipal Urban Growth Areas (Map 3)

Exhibit A
Amended Ordinance No. 16-066
GPP7 – Wildlife Corridors
Amendments to the Land Use Chapter of the GPP

This map identifies municipal urban growth areas (MUGAs) within the Southwest UGA. A MUGA contains all the land within a city’s current incorporated limits, plus adjacent, unincorporated territory which the city and county have identified as potentially appropriate for annexation at some time in the future. The map is also reflected in the Countywide Planning Policies (CPP) [Appendix B](#) which is adopted through Snohomish County Tomorrow. The MUGA will be used by Snohomish County in planning for future population and employment growth.

Open Space
((~~Corridor/Greenbelt~~)) Corridors
and Wildlife Areas Map (Map 4)

The countywide Open Space ((~~Corridor/Greenbelt~~)) Corridors and Wildlife Areas Map ((~~map~~)) geographically depicts various types of largely “open” land in Snohomish County that, taken in the aggregate, can serve as greenbelts to help structure land development patterns. This map is incorporated herein by this reference. Many of the land categories listed under Policy [LU 10.A.1](#) have been included in this map.

The purpose of the map is to provide a geographical framework to guide present and future implementation strategies for preserving open space and wildlife habitat and developing ((~~greenbelt~~)) open space and wildlife corridors within and between urban growth areas.

The map is a long-range planning tool that does not, by itself, create any regulatory impact. Certain underlying designations, such as forestry and agricultural land designations, may have regulatory

implications. This map, however, is not intended to be used in the review of development applications, nor does it imply or anticipate public ownership of, or public access to, these lands.

The several categories of lands depicted on the map include both public and privately owned parcels. In some cases (i.e., utility corridors) the lands may not be held in fee simple ownership by the primary user. Not all lands appearing on this map – either public or private – will become a part of a permanent open space system. Similarly, lands not presently shown on this map may later become permanent open space as the result of future public action or acquisition.

Except for clearly defined trail corridors already identified for county acquisition, parcel-specific public land acquisitions planned by Snohomish County (or other public agencies) are not identified on the map. This approach avoids the possibility of jeopardizing such acquisitions by calling them out in advance, thereby potentially inflating their asking price and narrowing options.

Although certain types of parks and other categories of open space lands within city limits have been depicted on the map, the plans of the respective cities should be considered the primary source of open space information within their municipal boundaries.

The scope and scale of this countywide map necessitate a size threshold for excluding categories and parcels that might otherwise be shown. Consequently, small scale neighborhood parks, subdivision detention or recreation sites, and the like have not been included on this map.

Exhibit A
Amended Ordinance No. 16-066
GPP7 – Wildlife Corridors
Amendments to the Land Use Chapter of the GPP

Finally, the accuracy and completeness of this map is dependent on data from many sources, some of which may be dated and/or incomplete. It is the intent of Snohomish County to regularly review and refine this data to reflect changes in ownership and underlying use, and to produce continual improvement in the accuracy and completeness of this map. This regular review shall occur as needed pursuant to the requirements of the Growth Management Act.

Lands Useful for Public Purpose (Map 5)

A countywide map depicting “lands useful for public purpose” is included (Map 5 in the map portfolio) to show various types of public land that presently accommodate public facilities. This map is incorporated herein by this reference. It is a long-range planning tool that will be regularly updated as future land acquisitions occur.

The purpose of the “Lands Useful for Public Purpose” map is the identification of site locations for existing and potential future public facilities. The primary focus is on the identification of public lands in the unincorporated areas – which consist primarily of county and state properties, but also include some city and federal properties.

Public roads, however, are not highlighted on this map, but are identified on the maps included with the Transportation Element. Similarly, public land used for resource management, wildlife refuge, or other open space uses are not included on this map, but are shown on the Open Space Map.

Except for clearly defined trail corridors already identified for county acquisition,

parcel-specific public land acquisitions planned by Snohomish County (or other public agencies) are not identified on the map. The reason for this is to avoid the possibility of jeopardizing such acquisitions by calling them out in advance, thereby inflating their asking price and narrowing siting options. As new sites for public facilities are added through conventional acquisition or by use of the common siting process, they will be added to this map.

Although certain types of parks and other public lands within city limits have been depicted on the map, the plans of the respective cities should be considered the primary source of information within their municipal boundaries.

The scope and scale of this countywide map necessitate a size threshold for excluding categories and parcels that might otherwise be shown. Consequently, small neighborhood parks, subdivision scale stormwater detention or recreation sites, and the like have not been included on this map. It is the intent of Snohomish County to regularly review and refine the source data to produce continual improvement in the accuracy of this map. This regular review shall occur as needed pursuant to the requirements of the Growth Management Act.

Rural/Urban Transition Area (RUTA).

This designation is intended to reserve a potential supply of land for future addition into the UGA. Developments utilizing rural cluster subdivision will have the option of redeveloping required open space tracts upon inclusion within an urban growth area.

Exhibit A
Amended Ordinance No. 16-066
GPP7 – Wildlife Corridors
Amendments to the Land Use Chapter of the GPP

**TRANSFER OF DEVELOPMENT
RIGHTS DESIGNATIONS**

**Transfer of Development Rights Sending
Area Overlay.**

This designation is part of the county’s Transfer of Development Rights (TDR) pilot program in partnership with the city of Arlington. The designation overlays other Future Land Use Map designations in order to provide clarity on applicable land use policies and regulations beyond the TDR program. It applies to lands that allow the voluntary sale and transfer of development rights to designated receiving areas pursuant to the county’s TDR pilot program in partnership with the city of Arlington. The sending area designation does not limit or otherwise affect development rights or zoning. Specific sending area provisions are established by implementing regulations.

Sending areas for the countywide TDR program are designated by policies [LU 14.A.2](#), [LU 14.A.3](#), and [LU 14.A.4](#), and are not shown on the Future Land Use Map. Receiving areas for the countywide TDR program are designated by policy [LU 14.A.7](#) and are not shown on the Future Land Use Map.

Exhibit B
Amended Ordinance No. 16-066
GPP7 – Wildlife Corridors
Map 4 – Open Space Corridors and Wildlife Areas

MAP 4 SNOHOMISH COUNTY GMA COMPREHENSIVE PLAN OPEN SPACE CORRIDORS AND WILDLIFE AREAS

EFFECTIVE DATE: XXXXXX X, 201X



Snohomish County
SNOHOMISH COUNTY DATA and
MAP DISCLAIMER

All maps, data, and information set forth herein ("Data"), are for illustrative purposes only and are not to be considered an official citation to, or representation of, the Snohomish County Code. Amendments and updates to the Data, together with other applicable County Code provisions, may apply which are not depicted herein. Snohomish County makes no representation or warranty concerning the content, accuracy, currency, completeness or quality of the Data contained herein and expressly disclaims any warranty of merchantability or fitness for any particular purpose. All persons accessing or otherwise using this Data assume all responsibility for use thereof and agree to hold Snohomish County harmless from and against any damages, loss, claim or liability arising out of any error, defect or omission contained within said Data. Washington State Law, Ch. 42.56 RCW, prohibits state and local agencies from providing access to lists of individuals intended for use for commercial purposes and, thus, no commercial use may be made of any Data comprising lists of individuals contained herein.

Parcel lines and designation boundaries are adjusted to the Snohomish County Assessor Integrated Land Records Parcel Data Base as of March 2013.

This map is a graphic representation applied from the Snohomish County Geographic Information System. It does not represent survey accuracy. This map is based on the best available information as of the date shown on the map.

For the purposes of land use application review, final determination of future land use designations will be made by the County during the review process.

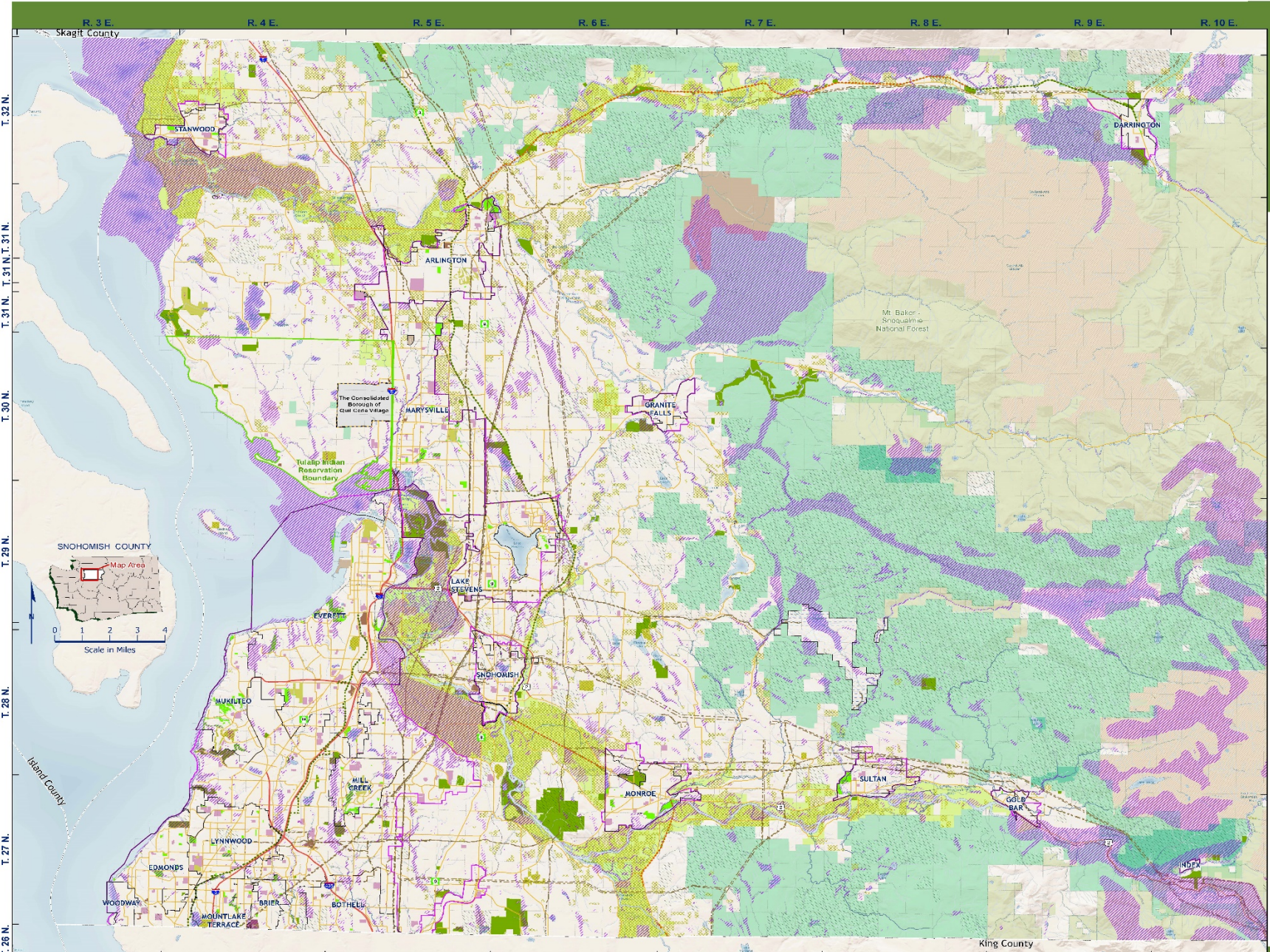
This portion of the Snohomish UGA is under review pursuant to a requested Conditional Letter of Map Revision from the Federal Emergency Management Agency.

Legend

- Priority Habitat and Species (WDFW)
- U. S. Wilderness Areas
- U. S. National Forest Lands
- Other Federal Lands
- State Trust Lands (DNR)
- State Wildlife Areas (WDFW)
- State Parks and Recreation Lands
- County Park Lands
- City Parks and Public Open Space
- Existing County Trails
- Proposed County Trails
- Designated Forest Lands (GMA/CP)
- Designated Agricultural Lands (GMA/CP)
- Tax Classified Open Space (RCW 84.34)
- Public Schools
- Cemeteries
- Golf Courses: County, City, Private
- City of Everett Water Supply (watershed only)
- Major Utility Transmission Corridors

Reference Layers

- County Boundary
- Urban Growth Boundary
- Incorporated City Boundary (draft amendment version:2014)
- Tulalip Indian Reservation Boundary
- The Consolidated Borough of Quil Ceda Village
- Arterial Roadway
- Freeway
- Railway
- Watercourse
- Waterbody
- Major Utility Transmission Corridors



W:\p\carto\flupdate2015\2015 FLUARC MAPS\AdoptedCPPMap4_OpenSpaceCorridorsGreenbelt_Draft Amend_20160929.mxd

PRODUCED BY SNOHOMISH COUNTY PLANNING AND DEVELOPMENT SERVICES, CARTOGRAPHY/GIS