

Adopted: 04/24/13
Effective: 05/06/13

SNOHOMISH COUNTY COUNCIL
SNOHOMISH COUNTY, WASHINGTON

ORDINANCE NO. 13 -019

ADOPTING CHANGES IN VOTING PRECINCTS PURSUANT TO
RCW 29A.16.040, RCW 29A.16.050 AND CHAPTER 2.47 SCC; AMENDING
CHAPTER 2.47 SNOHOMISH COUNTY CODE

WHEREAS, SCC 2.47.040(2) provides that the County Auditor may temporarily adjust precinct boundaries to maintain conformance with applicable state laws, and that such revisions to voting precincts must be submitted to the County Council for adoption by ordinance no later than May 1 of each year; and

WHEREAS, Exhibit A attached hereto sets forth the precinct changes made by the Auditor since April 21, 2012, including those temporarily adjusted to maintain conformance with applicable state law, resulting in the creation of 3 new voting precincts for a total of 759 voting precincts in Snohomish County as of April 29, 2013. Exhibit A details 6 changes to precincts due to city annexations and 16 administrative changes due to growth in the number of voters in a precinct and other administrative boundary adjustments;

NOW, THEREFORE, BE IT ORDAINED:

Section 1. The Council finds that pursuant to the authority of SCC 2.47.040(2), the Auditor has made those adjustments to precinct boundaries since April 21, 2012 that are set forth in Exhibit A attached hereto and incorporated herein by this reference.

Section 2. Snohomish County Code Section 2.47.030, last amended by Ordinance 12-016 on April 4, 2012, is amended to read:

2.47.030 Precincts adopted.

(1) The adopted voting precinct boundaries for the county are those set forth in the precinct map books maintained on file with the clerk of the council and the Snohomish county auditor's office, subject to revision from time to time in accordance with SCC 2.47.040.

(2) To implement boundary changes resulting from redistricting following the federal decennial census and to implement changes that are necessary to maintain conformance with applicable laws in accordance with SCC 2.47.040, the precinct

boundaries adopted by subsection (1) are revised cumulatively as set forth in the following documents:

- (a) Exhibit A attached to Ordinance 02-016.
- (b) Exhibit A attached to Ordinance 03-046.
- (c) Exhibit A attached to Ordinance 04-054.
- (d) Exhibit A attached to Ordinance 05-037.
- (e) Exhibit A attached to Ordinance 06-035.
- (f) Exhibit A attached to Ordinance 07-028.
- (g) Exhibit A attached to Ordinance 08-061.
- (h) Exhibit A attached to Ordinance 09-021.
- (i) Exhibit A attached to Ordinance 10-015.
- (j) Exhibit A attached to Ordinance 11-012.
- (k) Exhibit A attached to Ordinance 12-016.
- (l) Exhibit A attached to Ordinance 13-019

Copies of these documents are on file with the clerk of the council and the Snohomish county auditor's office.

PASSED this 24th day of April, 2013.

SNOHOMISH COUNTY COUNCIL
Snohomish County, Washington

[Signature]
Chairperson

ATTEST:

[Signature]
Clerk of the Council, Assistant

- APPROVED
- EMERGENCY
- VETOED

DATE: 4/26/13

[Signature]
County Executive

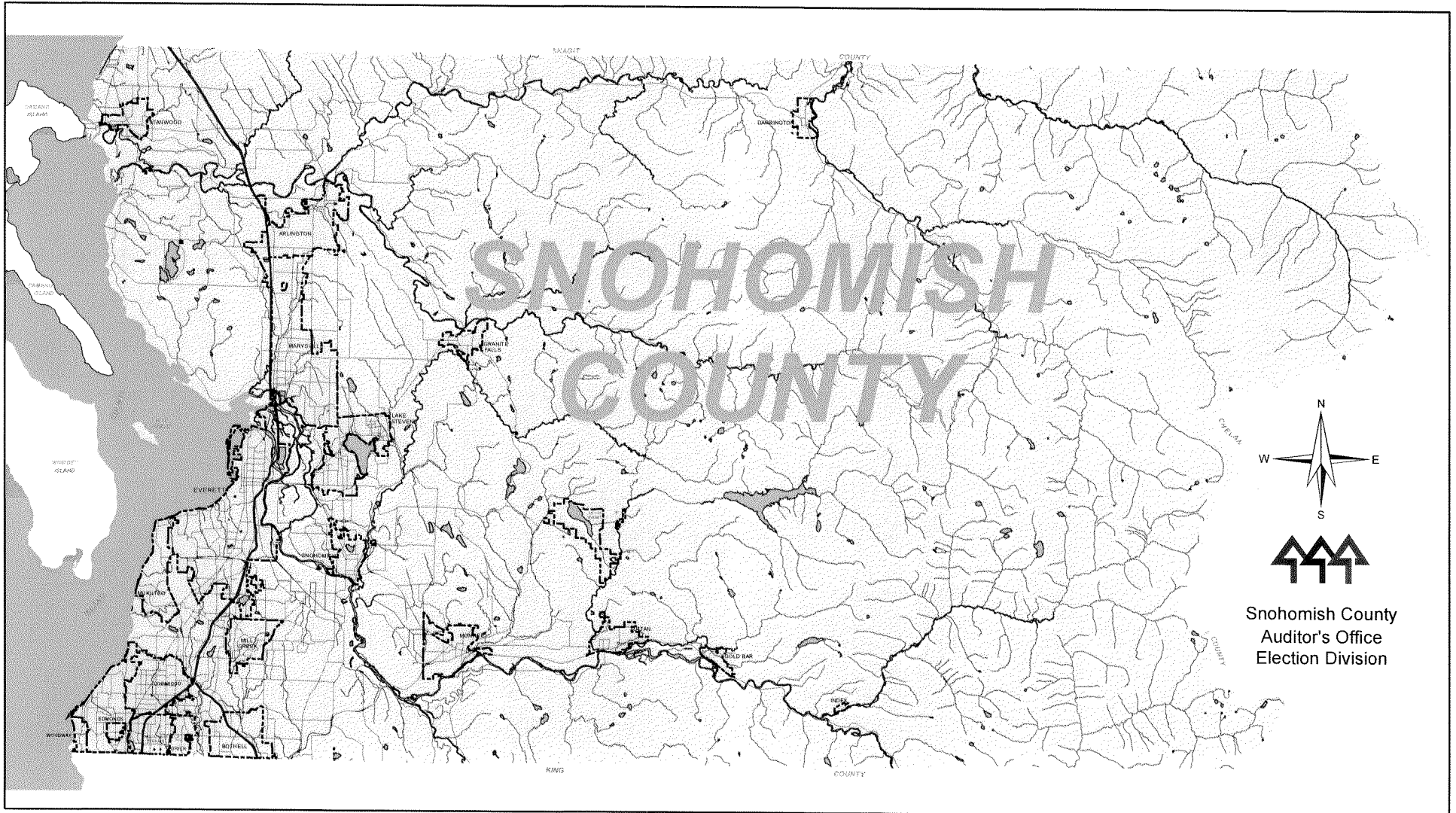
ATTEST:

[Signature]

Approved as to form only:

[Signature] 2/26/13
Deputy Prosecuting Attorney

PRECINCT CHANGES 2013



**Snohomish County Auditor
Carolyn Weikel**

Statistics For 2013 Precinct Adjustments

City precincts changed due to annexations	6
Changes due to Administrative Adjustments	16
Total number of changes	22
New precincts created (not including no registered voters (NRV) precincts)	3
Precincts dissolved	0
Last year's number of precincts	756
New total number of precincts	759

CONGRESSIONAL DISTRICT PRECINCT COUNT

<u>DISTRICTS</u>	<u>4/27/2012</u>	<u>4/29/2013</u>	Estimated Voters
CONGRESSIONAL DISTRICT #1	289	291	157,222
CONGRESSIONAL DISTRICT #2	409	410	226,420
CONGRESSIONAL DISTRICT #7	<u>58</u>	<u>58</u>	31,980
Totals	756	759	415,622

LEGISLATIVE DISTRICT PRECINCT COUNT

<u>DISTRICTS</u>	<u>4/27/2012</u>	<u>4/29/2013</u>	<u>Estimated Voters</u>
LEGISLATIVE DISTRICT #1	104	104	61,044
LEGISLATIVE DISTRICT #10	35	36	18,877
LEGISLATIVE DISTRICT #21	131	132	77,174
LEGISLATIVE DISTRICT #32	71	71	38,216
LEGISLATIVE DISTRICT #38	137	137	71,435
LEGISLATIVE DISTRICT #39	121	121	63,365
LEGISLATIVE DISTRICT #44	<u>157</u>	<u>158</u>	85,511
Total	756	759	415,622

COUNTY COUNCIL DISTRICT PRECINCT COUNT

<u>DISTRICTS</u>	<u>4/27/2012</u>	<u>4/29/2013</u>	Estimated Voters
COUNCIL DISTRICT #1	159	159	86,297
COUNCIL DISTRICT #2	141	142	73,958
COUNCIL DISTRICT #3	141	142	80,789
COUNCIL DISTRICT #4	149	148	86,945
COUNCIL DISTRICT #5	<u>166</u>	<u>168</u>	87,633
Totals	756	759	415,622

CRITERIA FOR ADJUSTING PRECINCT BOUNDARIES

To identify issues pertaining to precinct boundaries and the functional areas which might be impacted by the population, portions, descriptions and number of voting precincts, various factors have been reviewed. These include:

1. Boundary limitations

Legal requirements mandated by various RCW's require that precinct boundaries do not cross Congressional, Legislative, Judicial, County Council or Municipal boundaries. These limitations might 'force' the creation of some precincts well below the target size.

2. Number of registered voters

The total number of registered voters per precinct shall not exceed the limit of 1000 as set by the Snohomish County Council in SCC 2.47 (amended 2012).

3. Precincts with school district splits

Since School Districts are one of the most active districts having elections within the county, precincts with multiple school districts will be kept to an absolute minimum.

4. Growth potential of area

Growth potential is based on factors such as areas being within Urban Growth Areas and land parcel availability.

Growth potential will be a factor in determining how close to the target size each precinct should be.

5. Precincts with multiple district splits

Areas with a large number of portions will be reviewed as to the possibility of reducing district splits within precinct boundaries.

6. Discontinuous precinct portions

Due to city annexations, various precincts have developed parts that are no longer contiguous with the main area of that precinct. These "islands" will be studied for possible merger into adjacent precincts.

7. Use of Census Boundary Standards

In all cases of boundary changes, Census Boundary Standards will be used where possible to designate new precinct lines.

MAP #

PRECINCT NAME

VOTERS BEFORE TRANSFERRED VOTERS AFTER COMMENT

CITY ANNEXATIONS

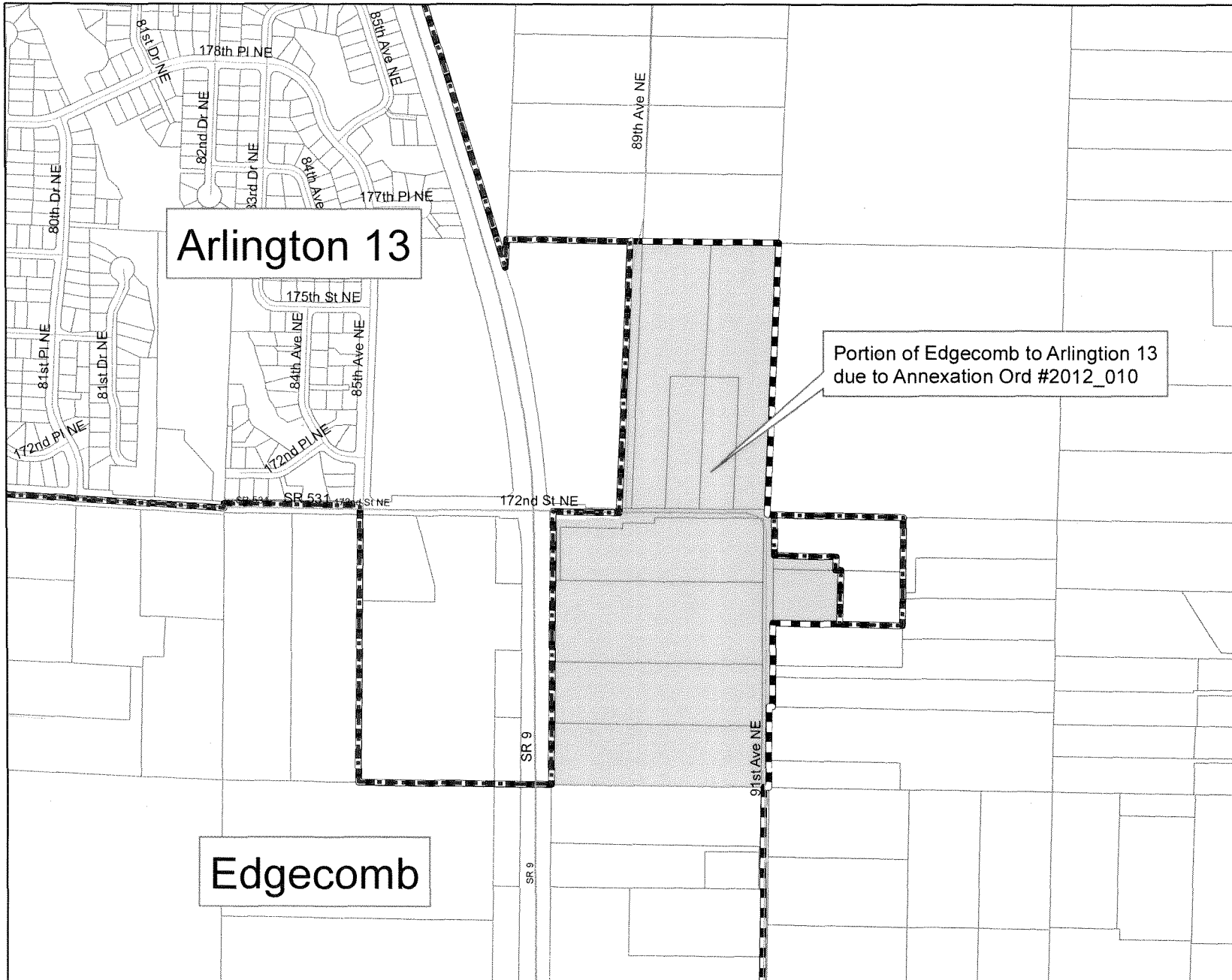
	From	Edgecomb	527	-15	512	Star Annexation
1	To	Arlington 13	760	15	775	SCC: 06/27/2012
	From	Atlas	789	-63	726	Allview Annexation
2	To	Brier 6	327	63	390	Election: 11/6/2013
	From	Kingman	919	-7	912	Bloomberg Hill Island
3	To	Bothell 32	565	7	572	SCC: 12/31/2012

ADMINISTRATIVE CHANGES

	From	Alicia	1055	-479	576	Split due to >1000 RV
4	To	Lunds Gulch	0	479	479	Completed:
	From	Boulder	1146	-339	807	Split due to >1000 RV
5	To	North Fork	0	339	339	Completed:
	From	Lake Stevens 19	1072	-498	574	Split due to >1000 RV
6	To	Lake Stevens 28	0	498	498	Completed:
	From	Lakewood	0	0	0	Correction to original Leg Change
7	To	NRV Ramp	0	0	0	Completed 5/3/2012
	From	Mountlake Terrace 8	734	-12	722	Eliminate Island, Leg correction.
8	To	Mountlake Terrace 14	703	12	715	Completed 5/3/2012

	From	NRV Parkway (dissolve)	0	0	0	Redistricting Commission Authority
9	To	Glen Acres	14	0	14	Completed 5/3/2012
	From	NRV Mill Creek (dissolve)	0	0	0	Redistricting Commission Authority
10	To	Mill Creek 7	21	0	21	Completed 5/3/2012
	From	NRV Everett BNRR (dissolve)	0	0	0	Redistricting Commission Authority
11	To	Evertt 49	601	0	601	Completed 5/3/2012

EDGECOMB annexation into ARLINGTON 13



Legend

- City Boundary
- pad_regions region.prec
- Parcels
- Arlington Annexation

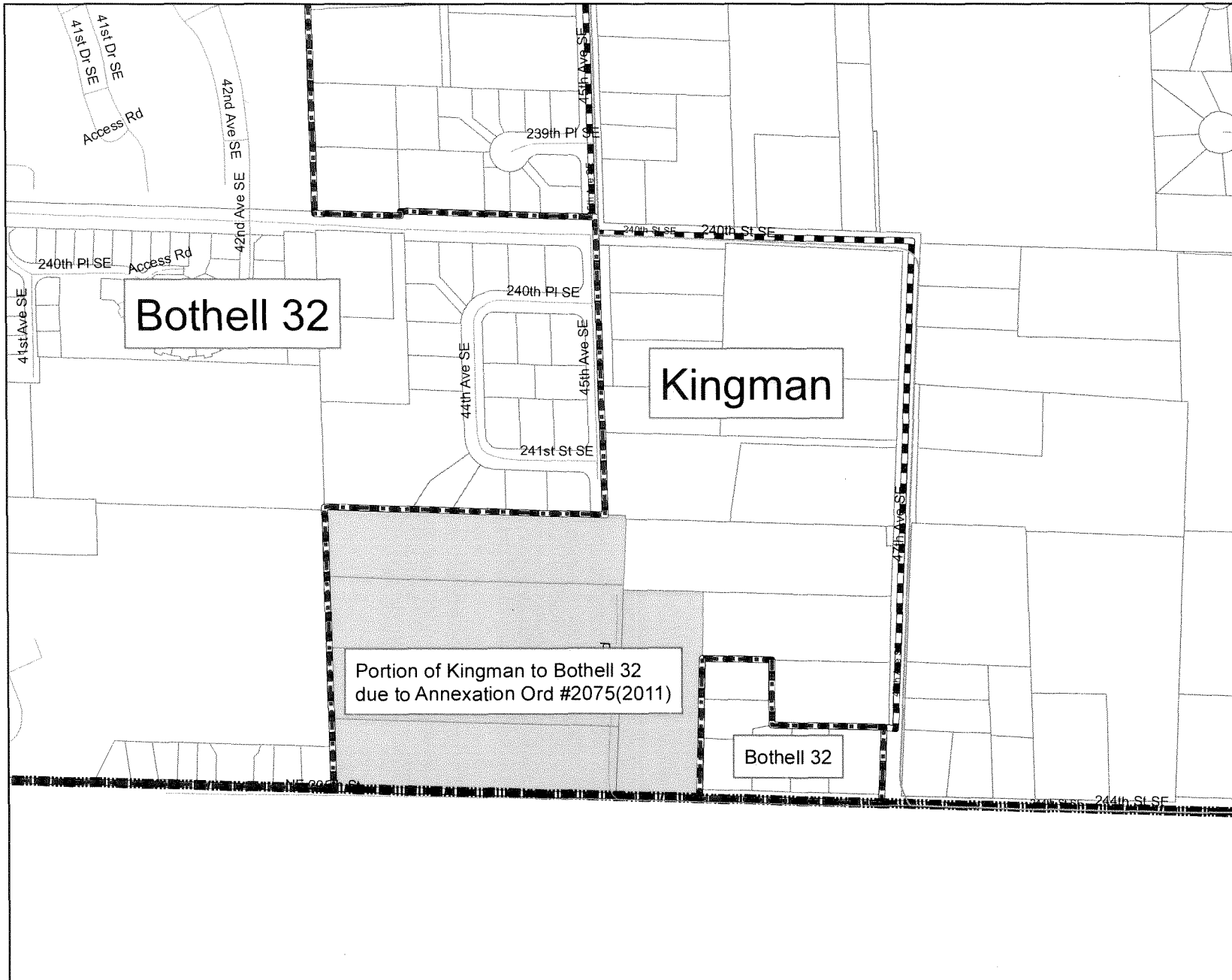


Snohomish County
Auditor's Office
Election Division



Map #

KINGMAN annexation into BOTHELL 32



Legend

- City Boundary
- pad_regions region.prec
- Parcels
- Bothell Annexation

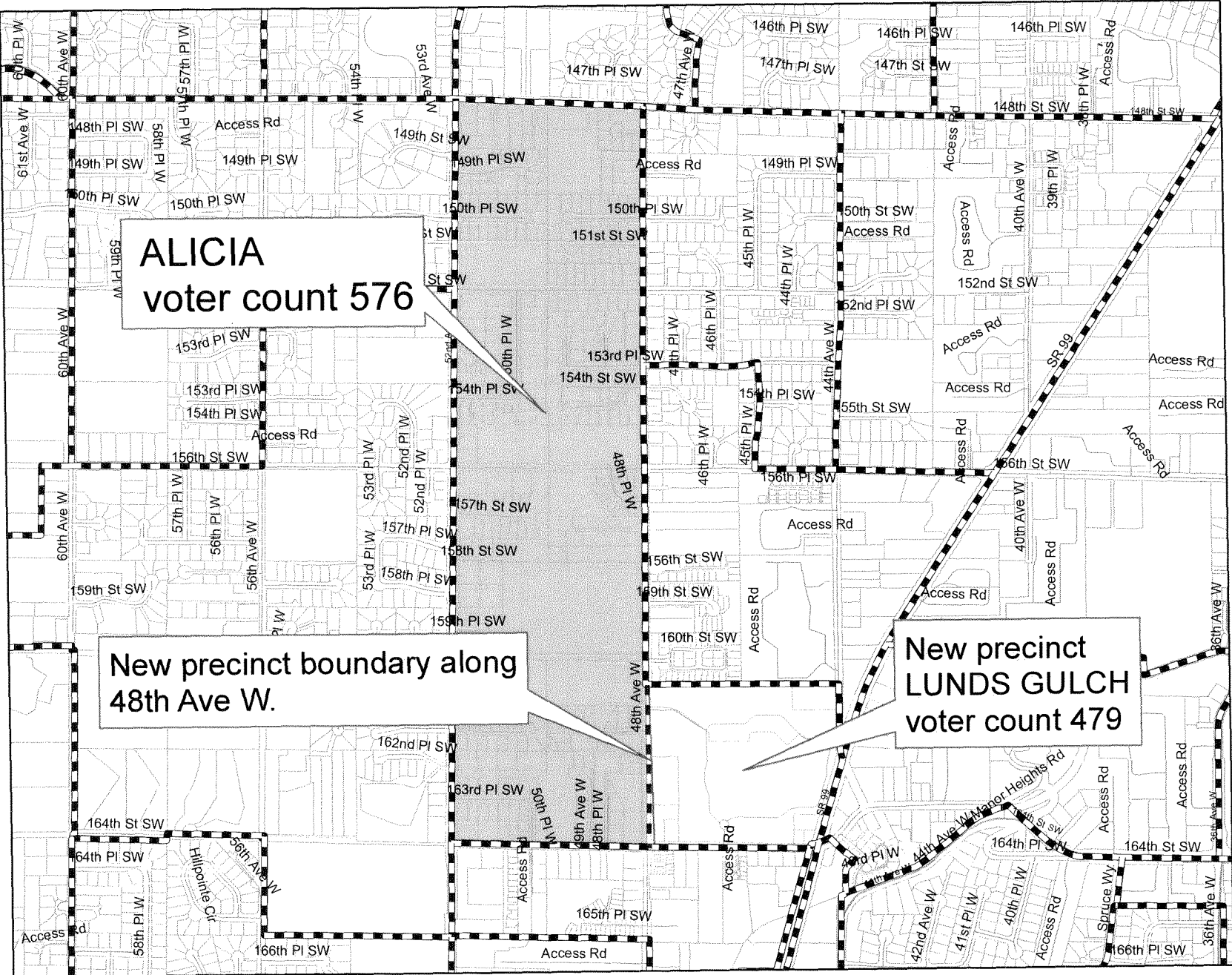


Snohomish County
Auditor's Office
Election Division



Map #

ALICIA to new LUNDS GULCH reduce voter count



- Legend**
- Parcels
 - City Boundary
 - Precinct Boundary

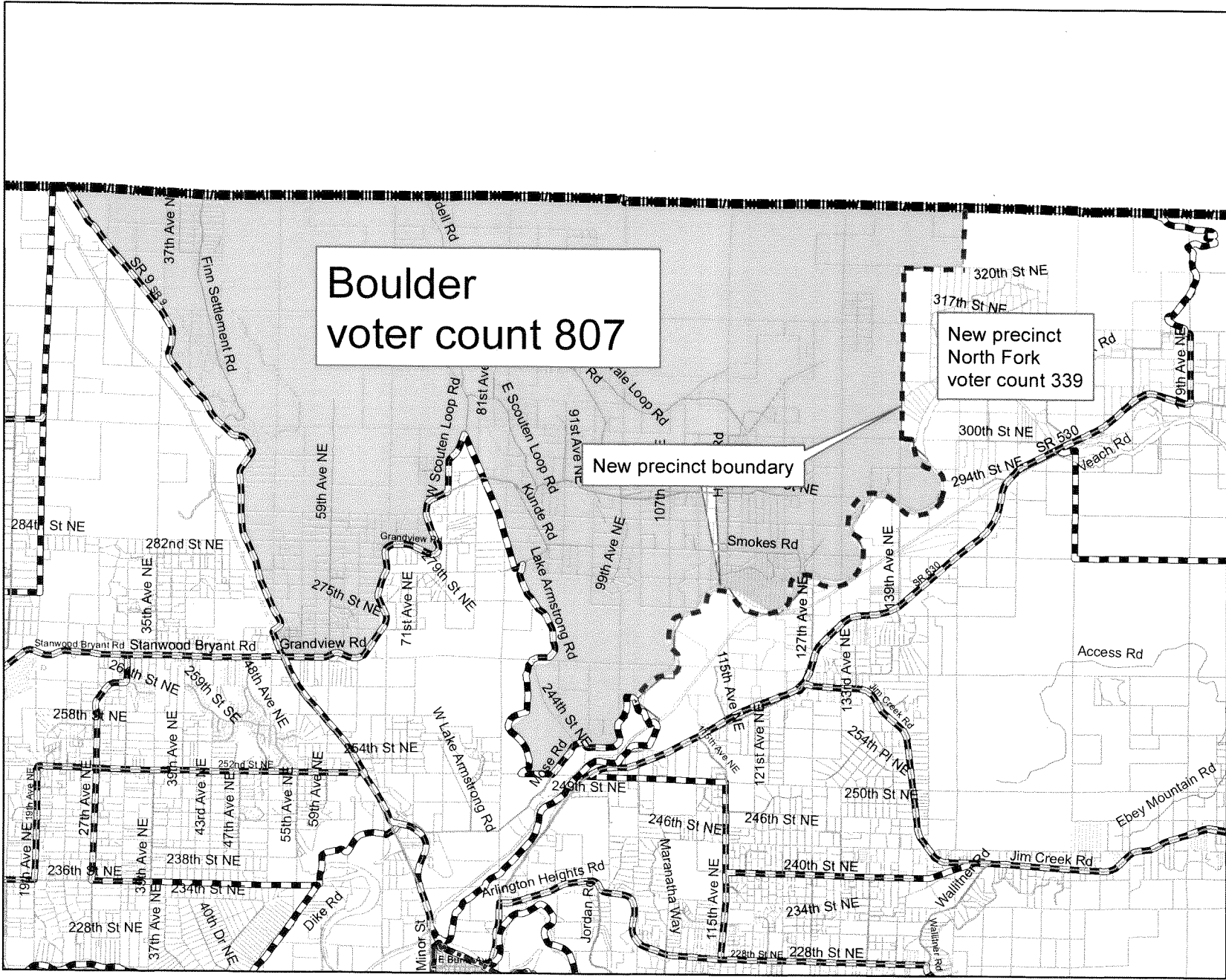


Snohomish County
Auditor's Office
Election Division



Map #

BOULDER to new pct NORTH FORK reduce voter count



- Legend
- Parcels
 - pad_regions region.prec
 - City Boundary

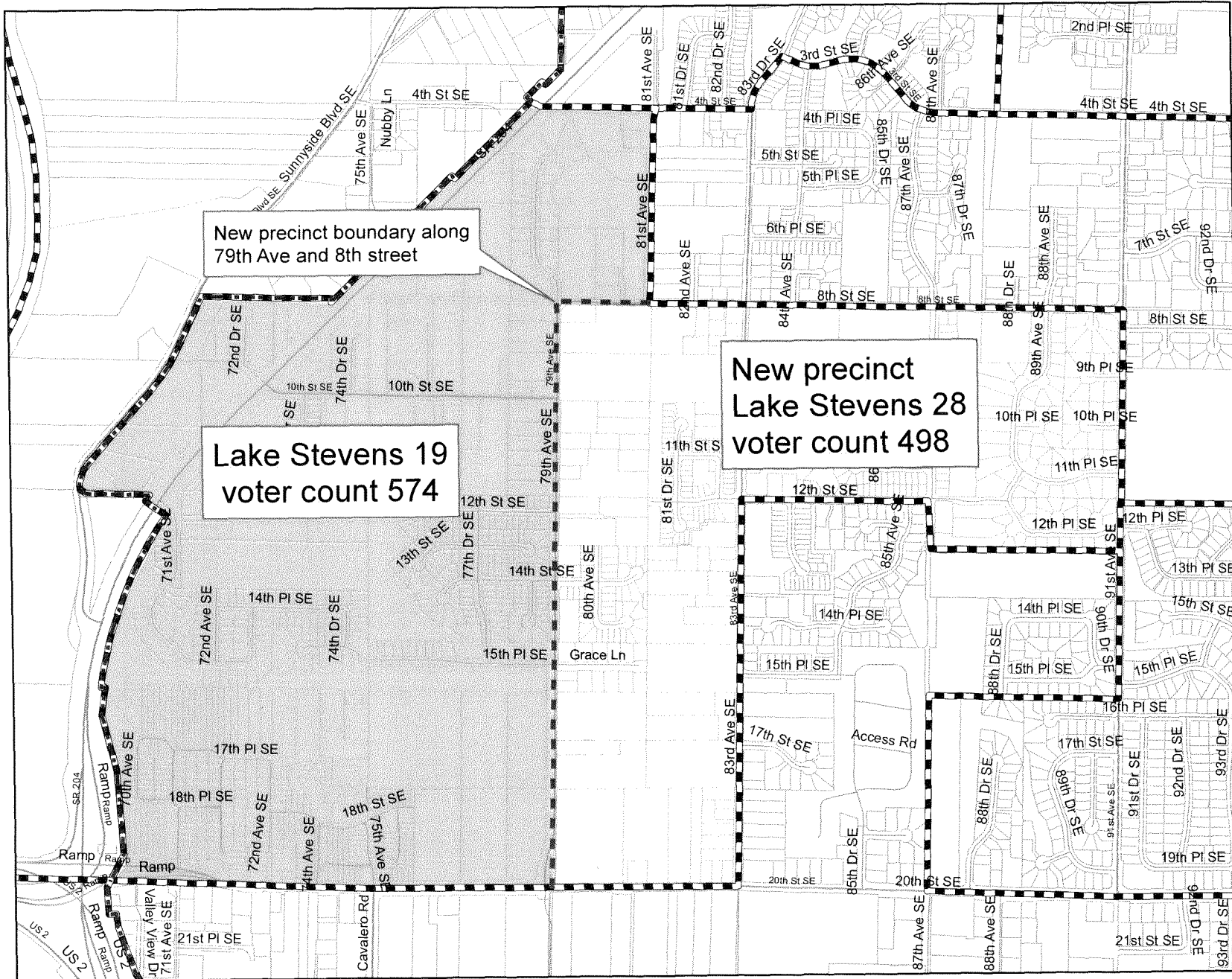


Snohomish County
Auditor's Office
Election Division



Map #

LK STEVENS 19 to new LK STEVENS 28 reduce voter count



- Legend**
- City Boundary
 - pad_regions region.prec
 - Parcels

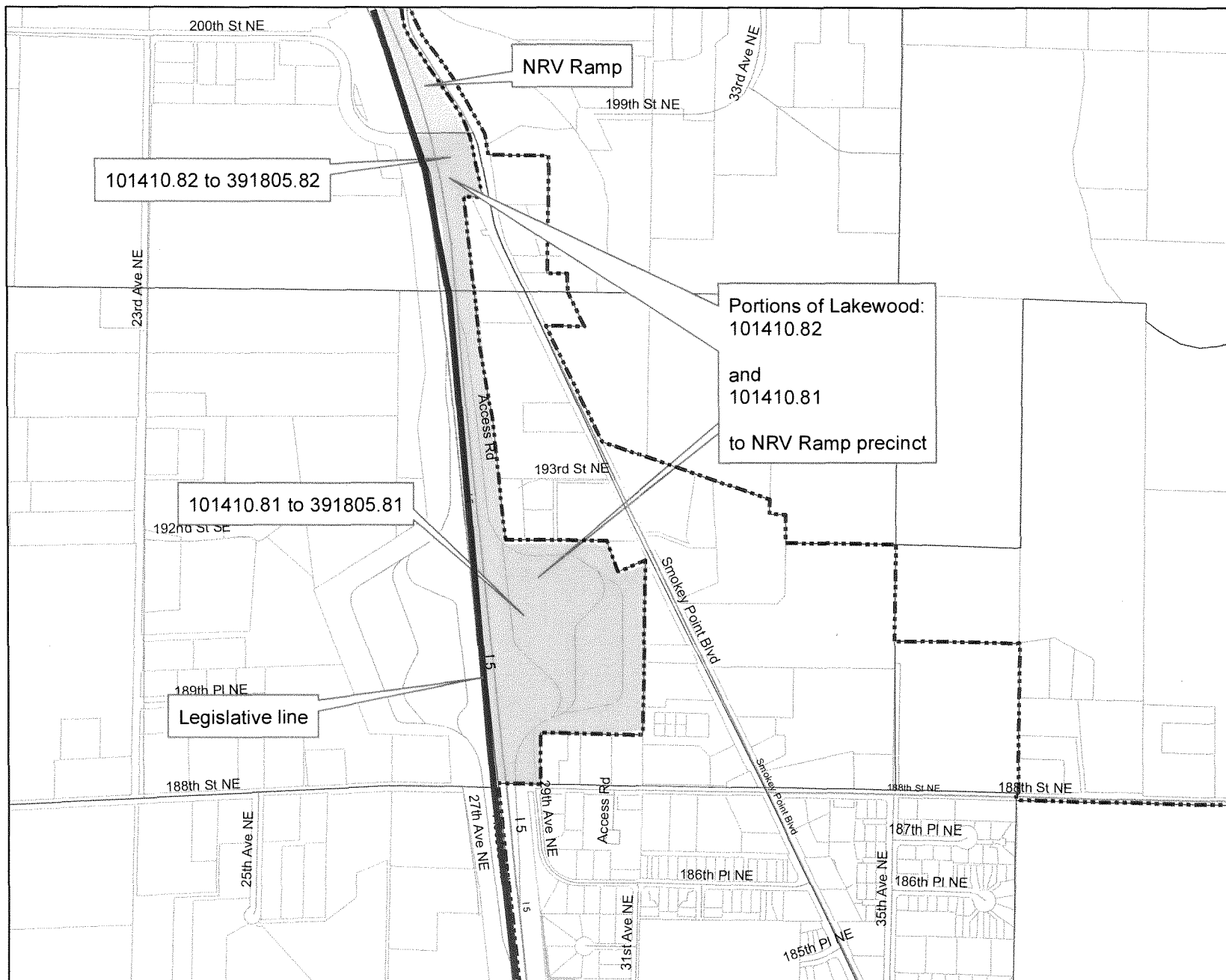


Snohomish County
Auditor's Office
Election Division



Map #

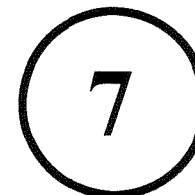
Lakewood - NRV Ramp (Correction to Original Leg Change)



Legend
□ Parcels
- - - City Boundary

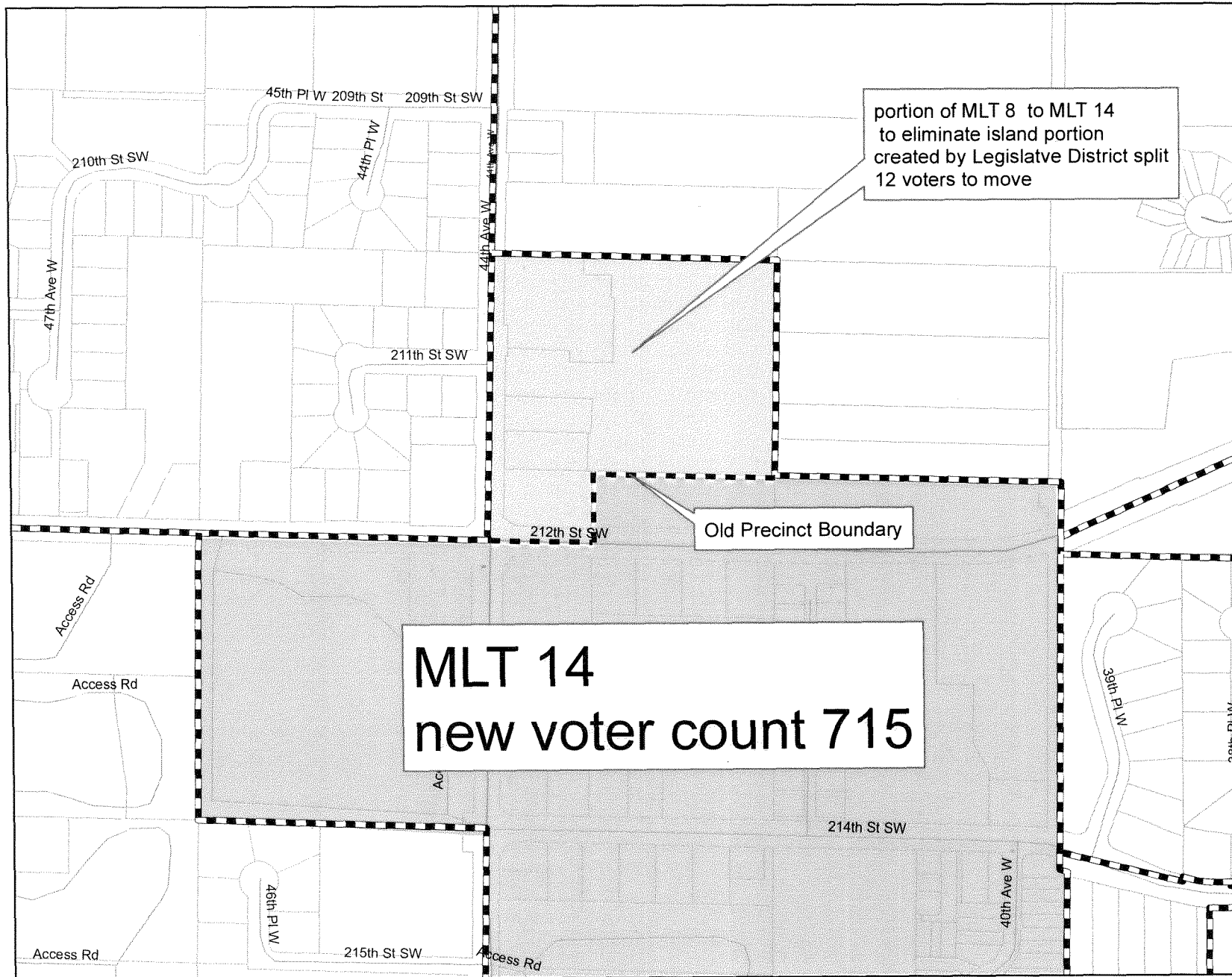


Snohomish County
Auditor's Office
Election Division



Map #

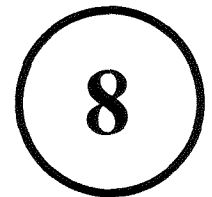
MLT 8 into MLT 14 (Eliminate Precinct Island)



- Legend**
- Parcels
 - City Boundary
 - Precinct Boundary

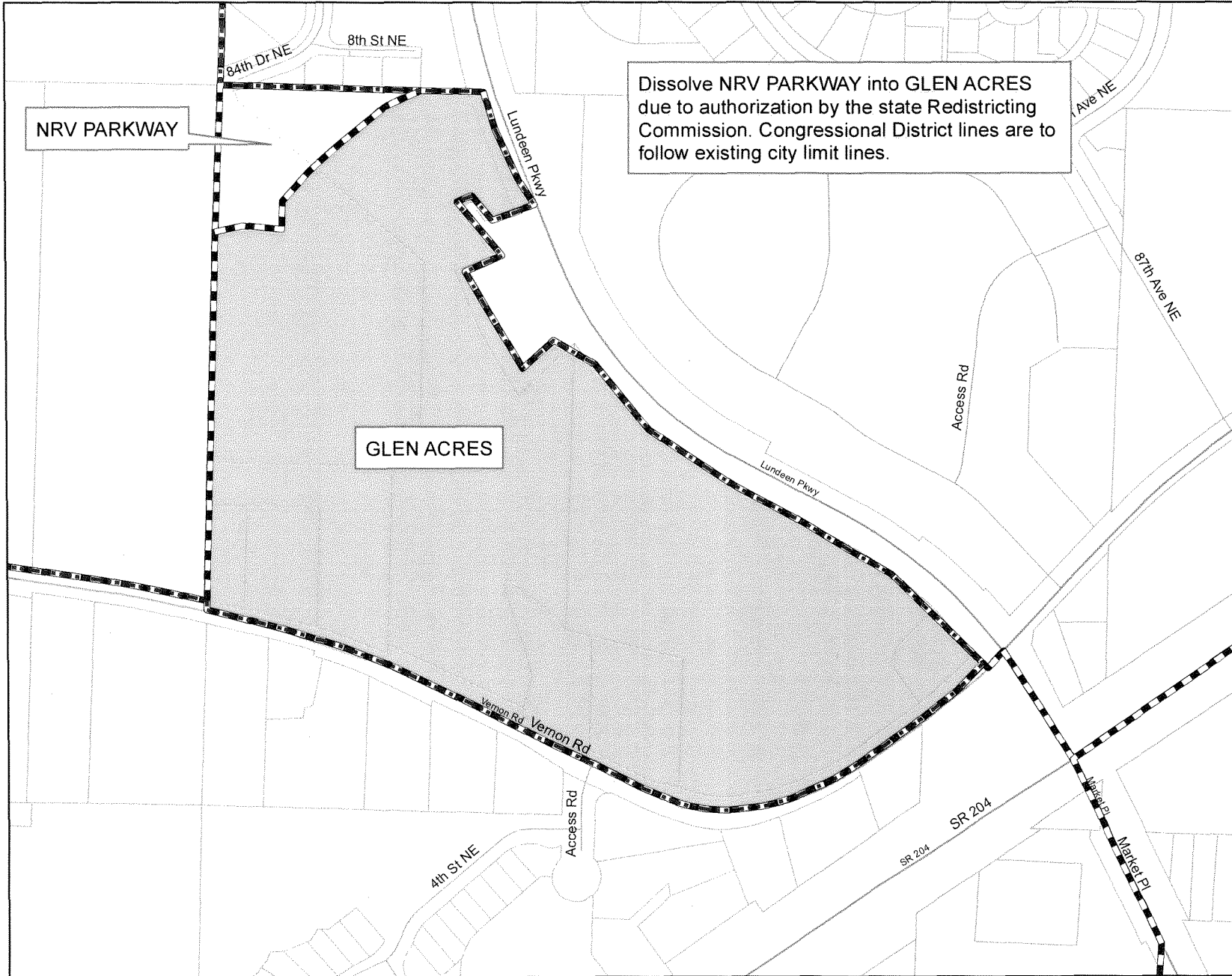



Snohomish County
Auditor's Office
Election Division



Map #

NRV PARKWAY dissolved into GLEN ACRES



Legend

- City Boundary
- pad_regions region.prec
- Parcels

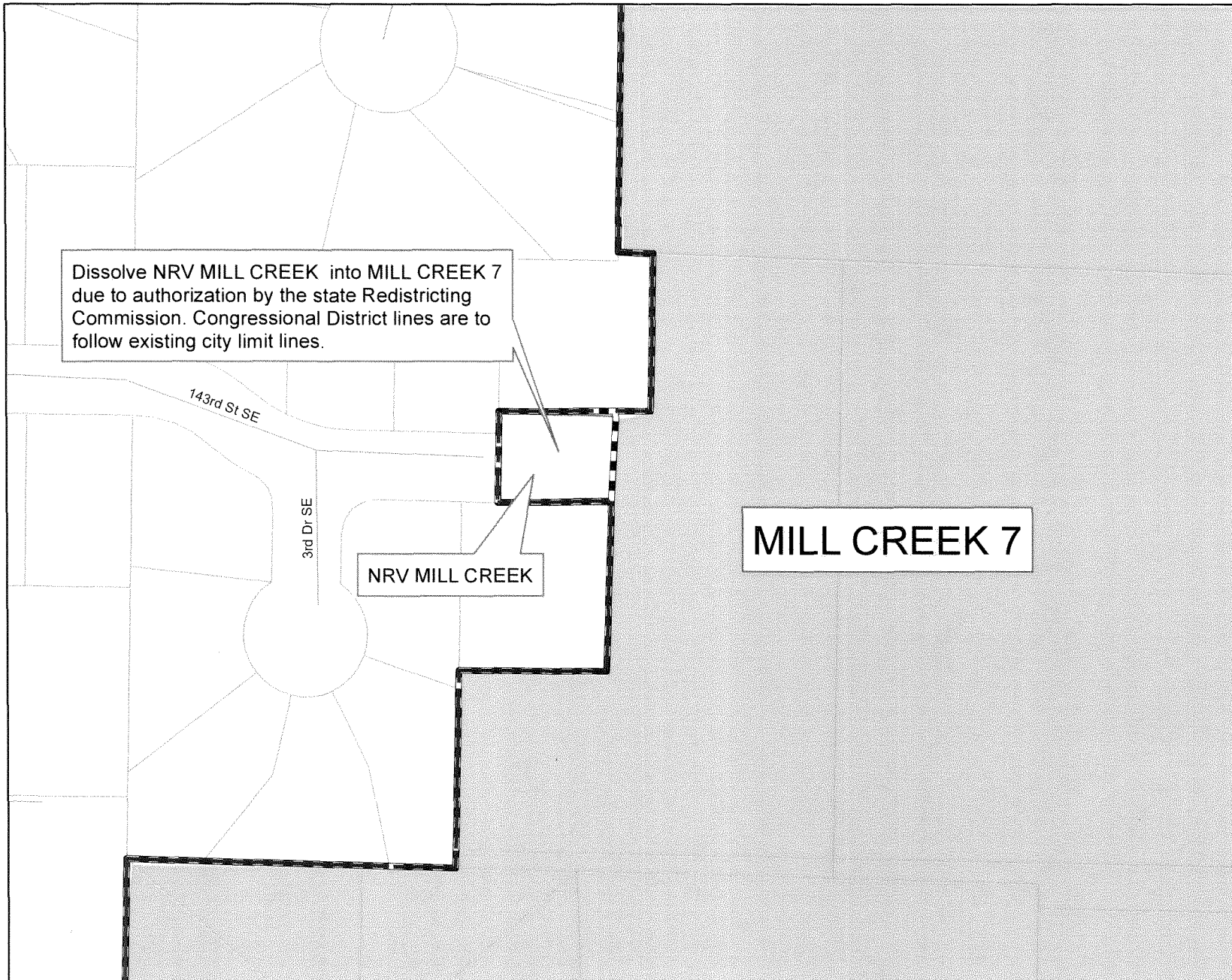


Snohomish County
Auditor's Office
Election Division



Map #

NRV MILL CREEK dissolved into MILL CREEK 7

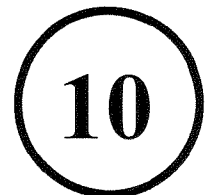


Legend

- City Boundary
- pad_regions region.prec
- Parcels

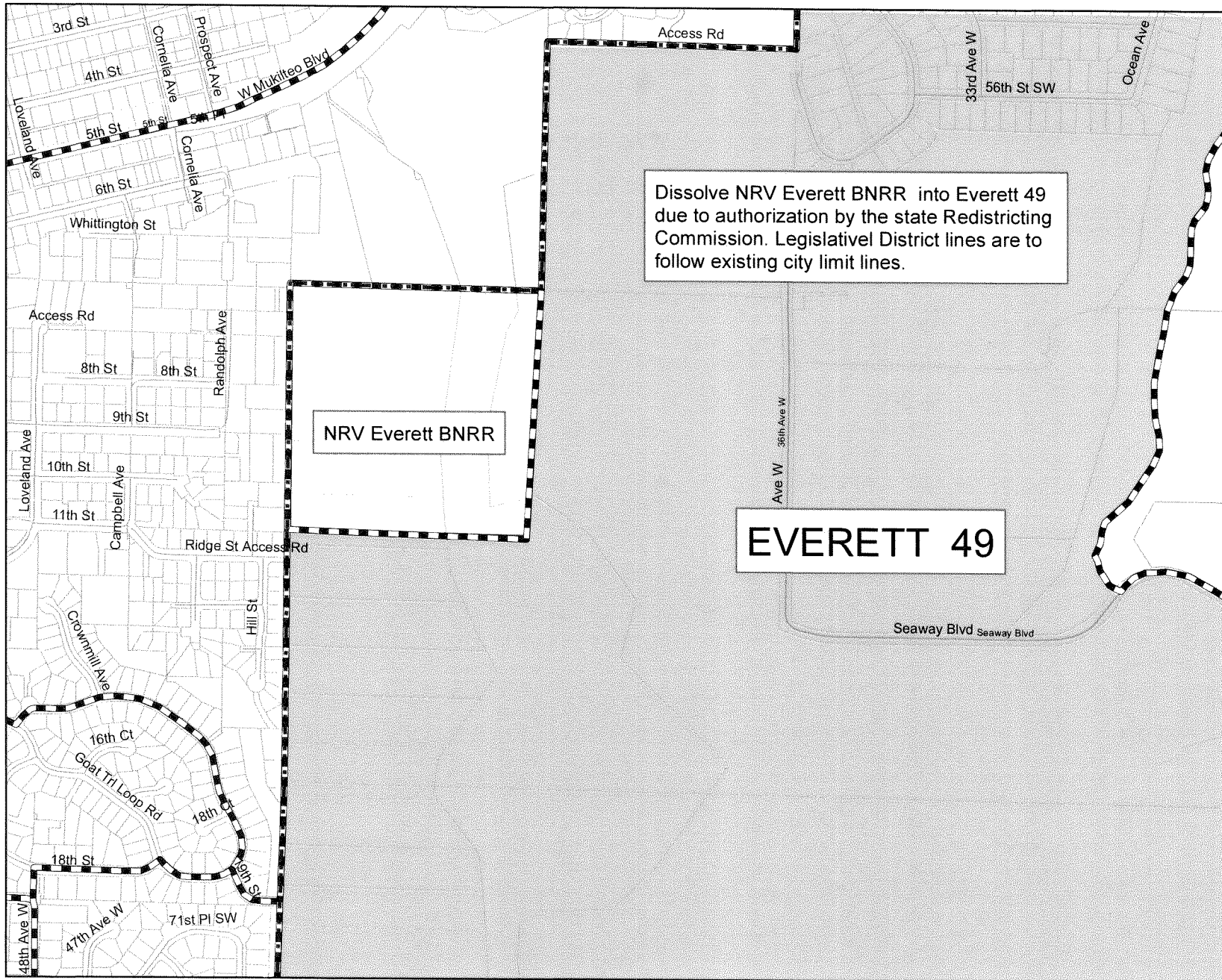


Snohomish County
Auditor's Office
Election Division



Map #

NRV Everett BNRR dissolved into Everett 49



Legend

- City Boundary
- pad_regions region.prec
- Parcels



Snohomish County
Auditor's Office
Election Division



Map #