



CO00003268

SNOHOMISH COUNTY COUNCIL
SNOHOMISH COUNTY, WASHINGTON

AMENDED ORDINANCE NO. 04-006

RELATING TO GROWTH MANAGEMENT, AMENDING ORDINANCE NO. 93-004 TO AMEND APPENDIX B OF THE COUNTYWIDE PLANNING POLICIES TO INCLUDE THE 2025 INITIAL GROWTH TARGETS PURSUANT TO THE SNOHOMISH COUNTY TOMORROW STEERING COMMITTEE RECOMMENDATION, AND AMENDING SCC 30.10.050

WHEREAS, the Growth Management Act (GMA) at RCW 36.70A.110(2) requires that Snohomish County and its cities use the growth management population projection made for the county by the State Office of Financial Management (OFM) as the basis for urban growth area determination; and

WHEREAS, OFM issued new growth management population projections for Snohomish County in January 2002 that included a range for potential 2025 total county population that varied from a low of 795,725 to a high of 1,062,903; and

WHEREAS, Countywide Planning Policy UG-2 requires that the cities and the county engage in the cooperative planning process of Snohomish County Tomorrow in order to establish a subcounty allocation of projected growth for coordination of growth management plans; and

WHEREAS, the Planning Advisory Committee (PAC) of Snohomish County Tomorrow, beginning in January 2003 conducted a technical review of the preliminary 2025 growth target preferences for cities, unincorporated urban growth areas, unincorporated municipal urban growth areas, and the rural/resource area of Snohomish County and recommended by consensus on September 18, 2003 an initial population and employment growth target allocation for the year 2025 to replace the 2012 targets currently contained in Appendix B of the Countywide Planning Policies; and

WHEREAS, the Snohomish County Tomorrow Steering Committee reviewed the PAC recommendation on September 24, 2003 and accepted the PAC recommendation on October 22, 2003; and

WHEREAS, the Snohomish County Tomorrow recommendation on the 2025 initial population growth allocation when summed to the countywide level (899,239) falls within the low-high 2025 population range provided by OFM; and

WHEREAS, Appendix B of the Countywide Planning Policies contain the results of the collaborative, interjurisdictional effort to establish a subcounty allocation of projected growth; and

WHEREAS, Snohomish County has adopted countywide planning policies in Ordinance No. 93-004 on February 4, 1993, and later amended those policies in Ordinance No. 94-002 on February 2, 1994; Ordinance No. 95-005 on February 15, 1995; Ordinance No. 95-110 on December 20, 1995; Ordinance No. 98-054 on July 15, 1998; Ordinance No. 99-120 on January 19, 2000; Amended Ordinance No. 99-121 on February 16, 2000; and Amended Ordinance Nos. 03-071, 03-072 and 03-073 on July 9, 2003; and

AMENDED ORDINANCE NO. 04-006 RELATING TO GROWTH MANAGEMENT, AMENDING ORDINANCE NO. 93-004 TO AMEND APPENDIX B OF THE CPPs TO INCLUDE THE 2025 INITIAL GROWTH TARGETS PURSUANT TO THE SCT STEERING COMMITTEE RECOMMENDATION, AND AMENDING SCC 30.10.050

WHEREAS, the Snohomish County Council held a public hearing on February 11, 2004 to consider the updating of Appendix B of the Countywide Planning Policies with the 2025 initial growth targets; and

WHEREAS, at the February 11, 2004 public hearing the Snohomish County Council passed Motion No. 04-034 which articulated the rationale for reserving a portion of the OFM population projection for potential allocation to fully contained communities (FCCs) consistent with Countywide Planning Policy UG-15, and which further allowed that the County during its 10-year comprehensive plan update may establish a future population of 15,000 residents as a FCC population reserve;

NOW, THEREFORE, BE IT ORDAINED:

Section 1. Section 1 of Ordinance 93-004, adopted February 4, 1993 and last amended by Amended Ordinance Nos. 03-071, 03-072, and 03-073 on July 9, 2003, is amended by adding the following amendments to Appendix B (shown attached) in the document entitled "County-Wide Planning Policies for Snohomish County," dated February 4, 1993.

Section 2. Snohomish County Code Section 30.10.050, adopted by Amended Ordinance 02-064 on November 9, 2002, is amended to read:

30.10.050 Countywide and multi-county planning policies.

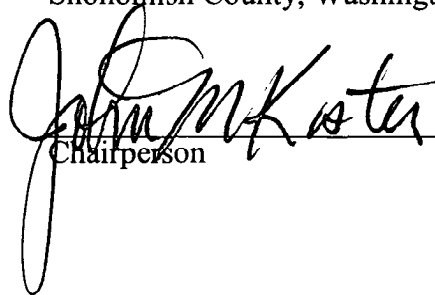
- (1) Pursuant to RCW 36.70A.210(2), Snohomish County has adopted countywide planning policies (CPPs) that establish the framework for county and city comprehensive plans as follows:
 - (a) Ordinance No. 93-004, adopted on February 4, 1993 (adopting CPPs);
 - (b) Ordinance No. 94-002, adopted on February 2, 1994 (amending Policies UG-4, HO-7, OD-2);
 - (c) Amended Ordinance No. 95-005, adopted on February 15, 1995 (amending Policy UG-2);
 - (d) Ordinance No. 95-110, adopted on December 20, 1995 (amending Policy UG-2, Appendix B);
 - (e) Ordinance No. 98-054, adopted on July 15, 1998 (amending Policy TR-12, adding Policy TR-13);
 - (f) Amended Ordinance No. 99-120, adopted on January 19, 2000 (adding Policy OD-12); and
 - (g) Amended Ordinance No. 99-121, adopted on February 16, 2000 (amending Policies UG-14, HO-9, and ED-3); and
 - (h) Amended Ordinance No. 03-071, adopted on July 9, 2003 (adopting list of reasonable measures); and
 - (i) Amended Ordinance No. 03-072, adopted on July 9, 2003 (amending UG-14); and
 - (j) Amended Ordinance No. 03-073, adopted on July 9, 2003 (amending OD-4); and
 - (k) Amended Ordinance No. 04-006, adopted on February 11, 2004 (amending Population Growth Targets).
- (2) Pursuant to RCW 36.70A.210(7), Snohomish County participated with King, Pierce, and Kitsap counties in the development and adoption of multi-county planning policies. These policies were adopted by the Puget Sound Regional Council on March 11, 1993 by Resolution A-93-02 and were updated by Resolution PSRC-A-95-02 on May 25, 1995.

AMENDED ORDINANCE NO. 04-006 RELATING TO GROWTH MANAGEMENT, AMENDING ORDINANCE NO. 93-004 TO AMEND APPENDIX B OF THE CPPs TO INCLUDE THE 2025 INITIAL GROWTH TARGETS PURSUANT TO THE SCT STEERING COMMITTEE RECOMMENDATION, AND AMENDING SCC 30.10.050

Section 3. Severability. If any provision of this ordinance or its application to any person or circumstance is held invalid, the remainder of the ordinance or the application of the provision to other persons or circumstances is not affected.

PASSED this 1st day of February, 2004.

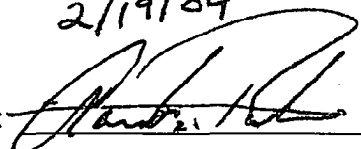
SNOHOMISH COUNTY COUNCIL
Snohomish County, Washington



Chairperson

ATTEST:

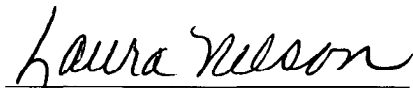

Asst. Clerk of Council

- (☒) APPROVED
() VETOED
() EMERGENCY

2/19/04
DATE: 


County Executive

ATTEST:



APPROVED AS TO FORM ONLY:

Deputy Prosecuting Attorney

AMENDED ORDINANCE NO. 04-006 RELATING TO GROWTH MANAGEMENT, AMENDING ORDINANCE NO. 93-004 TO AMEND APPENDIX B OF THE CPPs TO INCLUDE THE 2025 INITIAL GROWTH TARGETS PURSUANT TO THE SCT STEERING COMMITTEE RECOMMENDATION, AND AMENDING SCC 30.10.050

APPENDIX B							
2012 Population Targets							
for Cities, Urban Growth Areas (UGAs), and Rural Areas							
(Accepted by Snohomish County Tomorrow Steering Committee on August 23, 1995)							
Area /1	1992 Population Estimate /2		2012 Population		1992-2012 Change		Annual Avg % Change /3
Non-S.W. County UGA	80,816	16%	138,440	19%	57,624	26%	2.6%
Arlington/Smokey Point/Marysville UGA	39,205		67,410		28,205		2.6%
Arlington/Smokey Point portion	6,866		14,990		8,124		3.7%
Arlington City	4,656		7,900		3,244		2.7%
Unincorporated Arlington	482		2,340		1,858		6.6%
Smokey Pt./Lakewood/Is. Crossing (uninc.)	1,829		4,760		2,931		4.4%
Marysville portion	32,339		52,420		20,081		2.4%
Marysville City	14,122		22,800		8,678		2.3%
Unincorporated Marysville	18,217		29,620		11,403		2.4%
Darrington UGA	1,131		1,240		109		0.5%
Darrington Town	1,075		1,175		100		0.4%
Unincorporated	56		65		9		0.7%
Gold Bar Town /4	1,140		1,660		540		1.9%
Granite Falls UGA	1,416		4,000		2,584		4.8%
Granite Falls Town	1,284		2,835		1,551		3.6%
Unincorporated	132		1,165		1,033		8.0%
Index Town /4	140		190		50		1.5%
Lake Stevens UGA	14,284		26,090		11,806		2.9%
Lake Stevens City	4,240		8,771		4,531		3.5%
Unincorporated	10,044		17,319		7,275		2.7%
Monroe UGA	8,683		13,920		5,237		2.2%
Monroe City	6,095		8,000		1,905		2.2%
Unincorporated	3,768		5,920		2,132		2.2%
Snohomish UGA	9,386		12,910		3,524		1.6%
Snohomish City	6,870		7,800		930		0.6%
Unincorporated	2,486		5,110		2,614		3.4%
Stanwood UGA	2,536		3,820		1,284		3.9%
Stanwood City	2,155		3,378		1,223		2.2%
Unincorporated	381		2,442		2,061		7.3%
Sultan UGA	2,715		5,180		2,465		3.1%
Sultan Town	2,315		3,670		1,355		2.3%
Unincorporated	400		1,510		1,110		5.8%
S.W. County UGA	315,275	64%	443,356	62%	128,081	58%	1.7%
Incorporated S.W.	195,403		248,706		53,303		1.2%
Bothell City (part)	11,312		18,730		7,418		2.7%
Brierley City	5,760		7,200		1,440		1.1%
Edmonds City	30,896		38,930		8,034		0.9%
Everett City	75,846		96,000		20,154		1.2%
Lynnwood City	29,113		33,090		3,977		0.6%
Mill Creek City	8,309		12,730		4,421		2.1%
Mtlake Terrace City	18,833		22,106		3,273		0.5%
Mukilteo City	13,420		18,911		5,491		1.9%
Woodway Town	915		1,010		95		0.5%
Unincorporated S.W.	119,872		194,650		74,778		2.4%
UGA Total	396,091	80%	581,796	81%	185,705	84%	1.9%
City Total	238,394	48%	316,705	44%	78,311	36%	1.4%
Unincorporated UGA Total	157,697	32%	265,091	37%	107,394	49%	2.5%
Non-UGA Total (Rural Unincorporated)	98,209	20%	132,448	19%	34,239	16%	1.5%
County Total	494,300	100%	714,244	100%	216,944	100%	1.8%

APPENDIX B							
2012 Employment Targets							
for Cities, Urban Growth Areas (UGAs), and Rural Areas							
(Accepted by Snohomish County Tomorrow Steering Committee on August 23, 1995)							
Area /1	1990 Employment Estimate		2012 Employment		1990-2012 Change		Annual Avg % Change /2
Non-S.W. County UGA	26,860	17%	46,663	17%	19,703	18%	2.4%
Arlington/Smokey Point/Marysville UGA	12,973		23,312		10,339		2.6%
Arlington/Smokey Point portion	5,681		10,084		4,413		2.5%
Arlington City	4,756		8,004		1,248		1.1%
Unincorporated Arlington	106		834		428		6.1%
Smokey Pt./Lakewood/Is. Crossing (uninc.)	819		3,550		2,737		5.7%
Marysville portion	7,292		13,218		5,926		2.6%
Marysville City	6,017		10,072		4,055		2.3%
Unincorporated Marysville	1,275		3,146		1,871		3.6%
Darrington UGA	219		297		78		1.4%
Darrington Town	219		297		78		1.4%
Unincorporated	N.A.		N.A.		N.A.		N.A.
Gold Bar Town /3	286		512		226		2.6%
Granite Falls UGA	631		1,002		371		2.1%
Granite Falls Town	576		696		120		0.9%
Unincorporated	55		306		251		6.3%
Index Town /3	37		48		11		1.2%
Lake Stevens UGA	2,850		6,444		3,594		3.5%
Lake Stevens City	768		2,279		1,521		4.6%
Unincorporated	2,082		4,165		2,073		3.0%
Monroe UGA	4,289		7,078		2,789		2.2%
Monroe City	3,293		5,910		2,617		2.6%
Unincorporated	996		1,168		172		0.7%
Snohomish UGA	3,354		4,725		1,371		1.5%
Snohomish City	3,090		4,033		943		1.2%
Unincorporated	264		692		428		4.1%
Stanwood UGA	1,551		2,228		677		1.6%
Stanwood City	1,468		2,068		602		1.5%
Unincorporated	85		160		75		2.6%
Sultan UGA	670		917		247		1.4%
Sultan Town	670		917		247		1.4%
Unincorporated	N.A.		N.A.		N.A.		N.A.
S.W. County UGA	128,187	79%	211,166	78%	82,968	78%	2.2%
Incorporated S.W.	112,483		182,728		70,245		2.2%
Bothell City (part)	3,588		8,342		4,754		3.6%
Brier City	213		404		191		2.8%
Edmonds City	8,263		12,384		3,121		1.3%
Everett City	68,285		109,814		41,549		2.1%
Lynnwood City	21,509		34,736		13,227		2.1%
Mill Creek City	926		2,410		1,484		4.0%
Midlake Terrace City	3,483		4,798		1,335		1.5%
Mukilteo City	6,212		9,790		4,578		2.6%
Woodway Town	44		50		6		0.6%
Unincorporated S.W.	16,704		28,427		12,723		2.6%
UGA Total	155,047	95%	267,718	96%	102,671	96%	2.3%
City/Total	133,651	82%	215,564	80%	81,913	77%	2.1%
Unincorporated UGA Total	21,396	13%	42,164	16%	20,768	19%	3.0%
Non-UGA Total (Rural Unincorporated)	7,430	5%	11,377	4%	3,947	4%	1.9%
County Total	162,477	100%	269,095	100%	106,618	100%	2.2%

APPENDIX B

POPULATION TARGETS — FOOTNOTES

- _/1 - City population estimates and forecasts are shown for city boundaries as of Feb 28/93.
- _/2 - The 1992 population estimate equals the State Office of Financial Management (OFM) April 1, 1992 estimate plus any population annexed by the city between April 1, 1992 and February 28, 1993 as reported by OFM.
- _/3 - Average annual percentage change is calculated using arithmetic approximation: average annual growth divided by the average of 1992 and 2012 population.
- _/4 - UGA boundary is identical to the town boundary for Index, and nearly identical for Gold Bar.
- _/5 - The 34,239 population increase in rural unincorporated Snohomish County is 44 percent lower than the Puget Sound Regional Council's (PSRC) Existing Plans 20-year forecasted increase of 61,109.

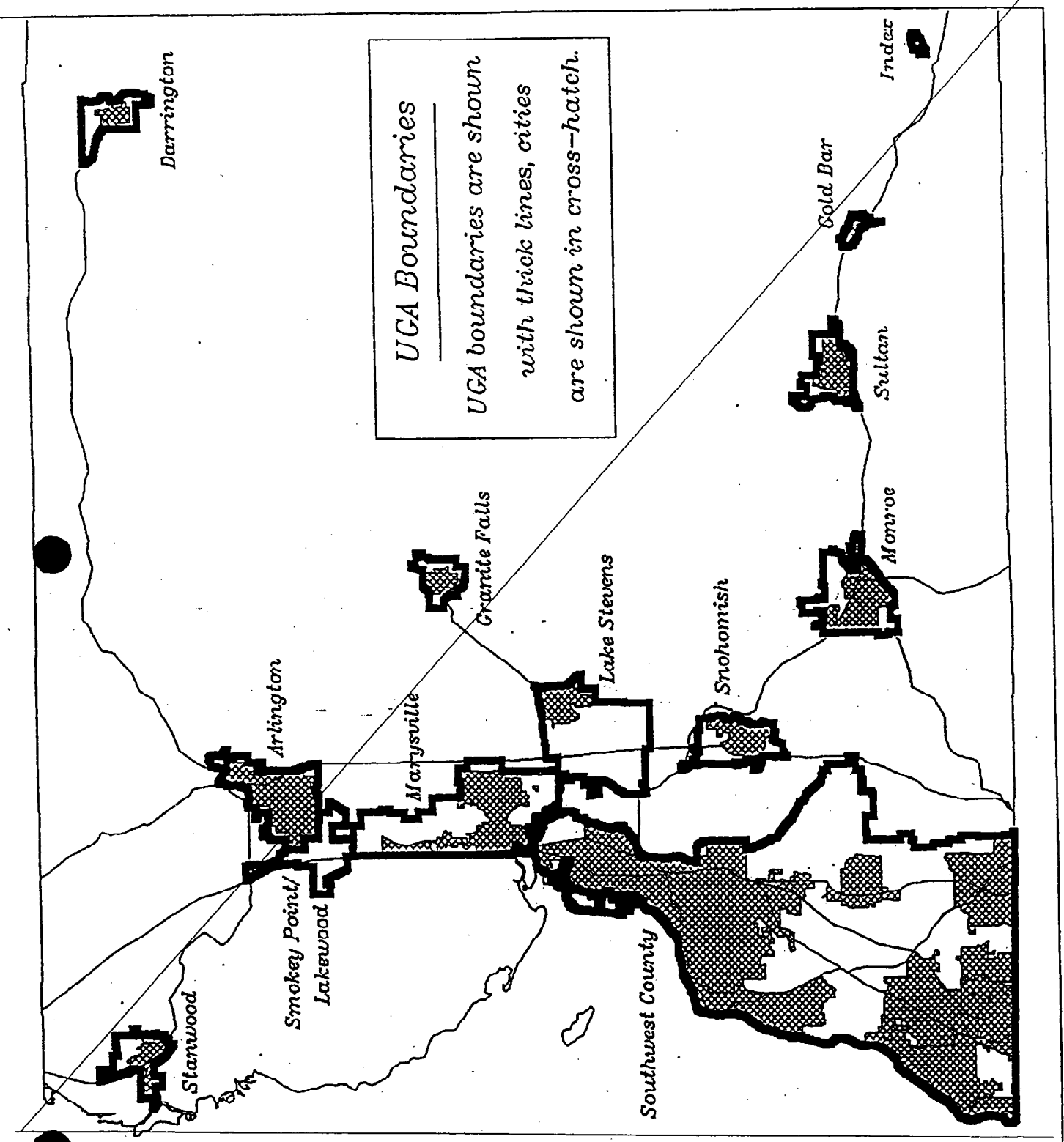
NOTE: These forecasts are based on the Feb 16/93 PSRC Vision 2020 Alt. #1 forecast for the year 2010, adjusted to add to the Office of Financial Management's (OFM) 2012 population projection of 714,244 for Snohomish County. The forecasts were initially disaggregated to cities and UGAs using the County's POPUL model. POPUL disaggregates the PSRC population forecast for each of Snohomish County's 47 Forecast and Analysis Zones (FAZs) to 16th sections within each FAZ, based on each 16th section's additional holding capacity for population. The 16th section forecasts were then aggregated to produce a city and UGA population forecast. Based on a subsequent evaluation of city and county GMA comprehensive plans and the discrepancies between the city-preferred growth targets and the county's preferred allocation, the Planning Advisory Committee of Snohomish County Tomorrow reached consensus on July 13, 1995 and recommended the reconciled 2012 population allocation shown in this table.

EMPLOYMENT TARGETS — FOOTNOTES

- _/1 - City employment estimates and forecasts are shown for city boundaries as of Feb 28/93.
 - _/2 - Average annual percentage change is calculated using arithmetic approximation: average annual growth divided by the average of 1990 and 2012 employment.
 - _/3 - UGA boundary is identical to the town boundary for Index, and nearly identical for Gold Bar.
- N/A - Information currently not available.

NOTE: The 1990 employment estimates are based on PSRC's 1990 FAZ employment distribution derived from Washington State Employment Security Department data, and disaggregated to cities and UGAs using Snohomish County Planning Department's 1990 Employment Security database. The employment forecasts are based on the Feb 16/93 PSRC Vision 2020 Alt. #1 FAZ forecast distribution for the year 2010, and disaggregated to cities and UGAs using Snohomish County Planning Department's employment correspondence table which relates FAZ employment forecasts to smaller units of geography. The employment estimates and forecasts represent all full- and part-time wage and salary workers and self-employed persons, excluding jobs within the resource (agriculture, forestry, fishing and mining) and construction sectors. Based on a subsequent evaluation of city and county GMA comprehensive plans and the discrepancies between the city-preferred growth targets and the county's preferred allocation, the Planning Advisory Committee of Snohomish County Tomorrow reached consensus on July 13, 1995 and recommended the reconciled 2012 employment allocation shown in this table.

APPENDIX B



APPENDIX B - Initial 2025 Population Growth Targets for Cities, UGAs and the Rural/Resource Area Recommended by the SCT Planning Advisory Committee (Sept. 18, 2003) and SCT Steering Committee (Oct. 22, 2003). Amended for FCC Population Reserve by County Council (Feb. 11, 2004).					
Area	2002 Estimated Population	City/County Initial 2025 Population Targets	2002 - 2025 Population Growth		
			Amount	Pct of Total County Growth	
Non-S.W. County UGA	134,101	208,324	74,223	27.36%	25.93%
Arlington UGA	13,920	20,720	6,800	2.51%	2.38%
Arlington City	13,280	17,360	4,080	1.50%	1.43%
Unincorporated	640	3,360	2,720	1.00%	0.95%
Darrington UGA	1,468	2,125	657	0.24%	0.23%
Darrington Town	1,335	1,910	575	0.21%	0.20%
Unincorporated	133	215	82	0.03%	0.03%
Gold Bar UGA	2,817	4,000	1,183	0.44%	0.41%
Gold Bar City	2,055	2,897	842	0.31%	0.29%
Unincorporated	762	1,103	341	0.13%	0.12%
Granite Falls UGA	2,909	6,970	4,061	1.50%	1.42%
Granite Falls City	2,760	4,770	2,010	0.74%	0.70%
Unincorporated	149	2,200	2,051	0.76%	0.72%
Index UGA (Incorporated)	160	190	30	0.01%	0.01%
Lake Stevens UGA	26,828	40,125	13,297	4.90%	4.65%
Lake Stevens City	6,640	8,360	1,720	0.63%	0.60%
Unincorporated	20,188	31,765	11,577	4.27%	4.04%
Marysville UGA	50,828	73,110	22,282	8.21%	7.78%
Marysville City	27,580	39,720	12,140	4.48%	4.24%
Unincorporated	23,248	33,400	10,152	3.74%	3.55%
Monroe UGA	16,240	26,590	10,350	3.92%	3.62%
Monroe City	14,670	20,540	5,870	2.16%	2.05%
Unincorporated	1,570	6,050	4,480	1.65%	1.57%
Snohomish UGA	10,194	14,535	4,341	1.60%	1.52%
Snohomish City	8,575	9,981	1,406	0.52%	0.49%
Unincorporated	1,619	4,554	2,935	1.08%	1.03%
Stanwood UGA	4,479	8,840	4,361	1.61%	1.52%
Stanwood City	4,085	5,650	1,565	0.58%	0.55%
Unincorporated	394	3,190	2,796	1.03%	0.98%
Sultan UGA	4,258	11,119	6,861	2.53%	2.40%
Sultan City	3,910	8,190	4,280	1.58%	1.50%
Unincorporated	348	2,929	2,581	0.95%	0.90%
S.W. County UGA	380,579	523,800	143,221	52.80%	50.04%
Incorporated S.W.	242,490	297,955	55,465	20.45%	19.38%
Bothell City (part)	14,490	22,000	7,510	2.77%	2.62%
Brier City	6,445	7,790	1,345	0.50%	0.47%
Edmonds City	39,460	44,880	5,420	2.00%	1.89%
Everett City	96,070	123,060	26,990	9.95%	9.43%
Lynnwood City	33,990	38,510	4,520	1.67%	1.58%
Mill Creek City	12,055	16,089	4,034	1.49%	1.41%
Milake Terrace City	20,470	22,456	1,986	0.73%	0.69%
Mukilteo City	18,520	22,000	3,480	1.28%	1.22%
Woodway Town	990	1,170	180	0.07%	0.06%
Unincorporated S.W.	138,089	225,845	87,756	32.35%	30.66%
UGA Total	514,680	732,124	217,444	80.17%	75.97%
City Total	327,540	417,523	89,983	33.17%	31.44%
Unincorporated UGA Total	187,140	314,601	127,461	46.99%	44.53%
FCC Population Reserve *	NA	15,000	15,000		5.24%
Potential UGA Total w/ FCC Pop Reserve		747,124	232,444		81.21%
Non-UGA Total (Rural Unincorporated)	113,320	167,115	53,795	19.83%	18.79%
County Total	628,000	899,239 914,239	274,239 286,239	100.00%	100.00%

NOTES: Detail may not add due to rounding. FCC = Fully Contained Community. NA = Not applicable.
* -- The portion of the 2025 countywide population projection reserved for potential FCCs. If approved on a project-by project basis, the portion of the population reserve associated with the approved FCC becomes part of the urban growth allocation [RCW 36.70A.350(2)].

APPENDIX B - Initial 2025 Employment Growth Targets for Cities, UGAs and the Rural/Resource Area Recommended by the SCT Planning Advisory Committee (Sept. 18, 2003) and SCT Steering Committee (Oct. 22, 2003)				
Area	2000 Estimated Employment	City/County Initial 2025 Employment Targets	2000 - 2025 Employment Growth	
			Amount	Pct of Total County Growth
Non-S.W. County UGA	43,269	69,436	26,167	21.62%
Arlington UGA	9,428	14,730	5,302	4.38%
Arlington City	9,208	14,350	5,142	4.25%
Unincorporated	220	380	160	0.13%
Darrington UGA	609	535	(74)	-0.06%
Darrington Town	475	415	(60)	-0.05%
Unincorporated	135	115	(20)	-0.02%
Gold Bar UGA	149	210	61	0.05%
Gold Bar City	149	210	61	0.05%
Unincorporated	-	-	-	0.00%
Granite Falls UGA	805	2,200	1,395	1.15%
Granite Falls City	771	2,109	1,338	1.11%
Unincorporated	34	91	57	0.05%
Index UGA (incorporated)	49	70	21	0.02%
Lake Stevens UGA	3,625	6,550	2,925	2.42%
Lake Stevens City	999	1,805	806	0.67%
Unincorporated	2,626	4,745	2,119	1.75%
Maltby UGA (unincorporated)	1,677	3,745	2,068	1.71%
Marysville UGA	10,539	17,230	6,691	5.53%
Marysville City	8,583	12,260	3,677	3.04%
Unincorporated	1,956	4,970	3,014	2.49%
Monroe UGA	7,630	12,390	4,760	3.93%
Monroe City	7,225	11,800	4,575	3.78%
Unincorporated	405	590	185	0.15%
Snohomish UGA	4,873	6,410	1,537	1.27%
Snohomish City	4,132	4,900	768	0.63%
Unincorporated	741	1,510	769	0.64%
Stanwood UGA	2,973	5,550	2,577	2.13%
Stanwood City	2,567	4,790	2,223	1.84%
Unincorporated	406	760	354	0.29%
Sultan UGA	912	3,561	2,649	2.19%
Sultan City	799	3,119	2,320	1.92%
Unincorporated	113	442	329	0.27%
S.W. County UGA	167,013	250,863	83,850	69.28%
Incorporated S.W.	143,191	212,273	69,082	57.07%
Bothell City (part)	10,150	15,840	5,690	4.70%
Brier City	326	430	104	0.09%
Edmonds City	10,322	12,190	1,868	1.54%
Everett City	81,117	130,340	49,223	40.67%
Lynnwood City	24,493	31,350	6,857	5.67%
Mill Creek City	2,808	4,544	1,736	1.43%
Mtlake Terrace City	7,127	8,039	912	0.75%
Mukilteo City	6,779	9,450	2,671	2.21%
Woodway Town	69	90	21	0.02%
Unincorporated S.W.	23,822	38,590	14,768	12.20%
UGA Total	210,282	320,299	110,017	90.89%
City Total	178,148	268,101	89,954	74.32%
Unincorporated UGA Total	32,135	52,198	20,063	16.58%
Non-UGA Total (Rural Unincorporated)	7,128	18,150 /1	11,022	9.11%
County Total	217,410	338,449	121,039	100.00%
NOTES: Includes all full- and part-time wage and salary workers and self-employed persons, excluding jobs within the resource (agriculture, forestry, fishing and mining) and construction sectors. Detail may not add due to rounding. /1 - Includes employment forecast information provided by Tulalip Tribes to the year 2020, extrapolated by SCT to 2025. Assumes a total of 12,300 jobs on Tulalip Reservation by 2025 (up from 2,680 total jobs in 2000).				

[Page 3 of 7 to be added.]

**APPENDIX B - Initial 2025 Population Growth Targets for MUGA Analysis Areas
Recommended by the SCT Planning Advisory Committee (Sept. 18, 2003) and SCT
Steering Committee (Oct. 22, 2003)**

Population

Unincorporated Areas within SW UGA:	2000	2025 Initial Targets	2000-2025 Change
Bothell	15,420	28,385	12,965
Brier	2,090	3,295	1,205
Edmonds	3,500	3,965	465
Everett - Total	37,570	66,030	28,460
Everett - City Proposed Boundary	34,470	58,210	23,740
Stickney Lake Gap Area	3,100	7,820	4,720
Lynnwood /1	21,470	38,355	16,885
Mill Creek - Total	28,360	56,215	27,855
Mill Creek - Without Overlap	26,450	52,810	26,360
Mill Creek/Lynnwood Overlap	1,910	3,405	1,495
Mountlake Terrace	80	105	25
Mukilteo - Total	10,310	14,410	4,100
Mukilteo - Without Overlap	8,430	10,985	2,555
Everett/Mukilteo Overlap /2	1,880	3,425	1,545
Silver Firs	10,870	15,080	4,210
Total Unincorporated SW UGA	129,670	225,840	96,170

NOTES: Detail may not add due to rounding.

Year 2000 population is provided for unincorporated areas using current city boundaries.

/1 - Includes new gap area which arose after the draft initial 2025 growth targets were released by the SCT PAC on January 9, 2003.

/2 - Former overlap area between Everett and Mukilteo which existed when the draft initial 2025 growth targets were released by the SCT PAC on January 9, 2003. Since that time, the two cities have resolved the overlap issue by assigning the area to Mukilteo.

[Page 4 of 7 to be added.]

**APPENDIX B - Initial 2025 Employment Growth Targets for MUGA Analysis Areas
Recommended by the SCT Planning Advisory Committee (Sept. 18, 2003) and SCT
Steering Committee (Oct. 22, 2003)**

Employment

Unincorporated Areas within SW UGA:	2000	2025 Initial Targets	2000-2025 Change
Bothell	1,950	2,790	840
Brier	90	165	75
Edmonds	380	515	135
Everett - Total	5,510	9,530	4,020
Everett - City Proposed Boundary	5,030	8,720	3,690
Stickney Lake Gap Area	480	810	330
Lynnwood /1	2,410	5,150	2,740
Mill Creek - Total	3,470	7,440	3,970
Mill Creek - Without Overlap	1,960	4,375	2,415
Mill Creek/Lynnwood Overlap	1,510	3,065	1,555
Mountlake Terrace	20	20	0
Mukilteo - Total	2,890	4,750	1,860
Mukilteo - Without Overlap	650	1,000	350
Everett/Mukilteo Overlap /2	2,240	3,750	1,510
Woodway	20	30	
Silver Firs	420	525	105
Paine Field	4,560	7,655	
Total Unincorporated SW UGA	21,720	38,570	16,850

NOTE: Detail may not add due to rounding.

Year 2000 employment is provided for unincorporated areas using current city boundaries.

/1 - Includes new gap area which arose after the draft initial 2025 growth targets were released by the SCT PAC on January 9, 2003.

/2 - Former overlap area between Everett and Mukilteo which existed when the draft initial 2025 growth targets were released by the SCT PAC on January 9, 2003. Since that time, the two cities have resolved the overlap issue by assigning the area to Mukilteo.

APPENDIX B

Technical Notes to Accompany Initial 2025 Population and Employment Growth Targets

Countywide Planning Policy UG-2 calls for the use of the Puget Sound Regional Council's (PSRC) population and employment forecasts at the forecast analysis zone (FAZ) level as a starting point for allocating the Office of Financial Management (OFM) forecast to subareas (cities, UGAs and the rural/resources area) within the County.

The new OFM forecasts for Snohomish County, released early in 2002, included a countywide low population forecast (795,725) and a high population forecast (1,062,903) for the year 2025. For the upcoming 10-year comprehensive plan update, jurisdictions in Snohomish County are collectively required under the GMA to plan for the accommodation of population growth that falls somewhere between the low and high extremes. Given the magnitude of the difference between population under the low and high alternatives (i.e., more than a quarter million population difference between the two), the SCT Planning Advisory Committee (PAC) recommended that a smaller range around the intermediate (or "most likely") OFM population forecast for Snohomish County (929,314) be used as the basis for development of the subcounty low-high growth ranges. For purposes of the developing the draft initial growth target ranges for cities and UGAs, half of the OFM low-high population growth range for 2025 (centered on the intermediate forecast) was used as a countywide control total, resulting in a low population for 2025 of 862,500 and a high population for 2025 of 996,200.

During the fall of 2002, the PSRC began development of updated population and employment forecasts at the FAZ level for the years 2010, 2020 and 2030, using recently obtained information from the Census 2000 and other sources. The PAC reviewed and commented on these forecasts as they were developed during the fall. Official "working draft" forecasts were released by the PSRC on December 18, 2002 and were used by the PAC to develop the draft initial growth target ranges.

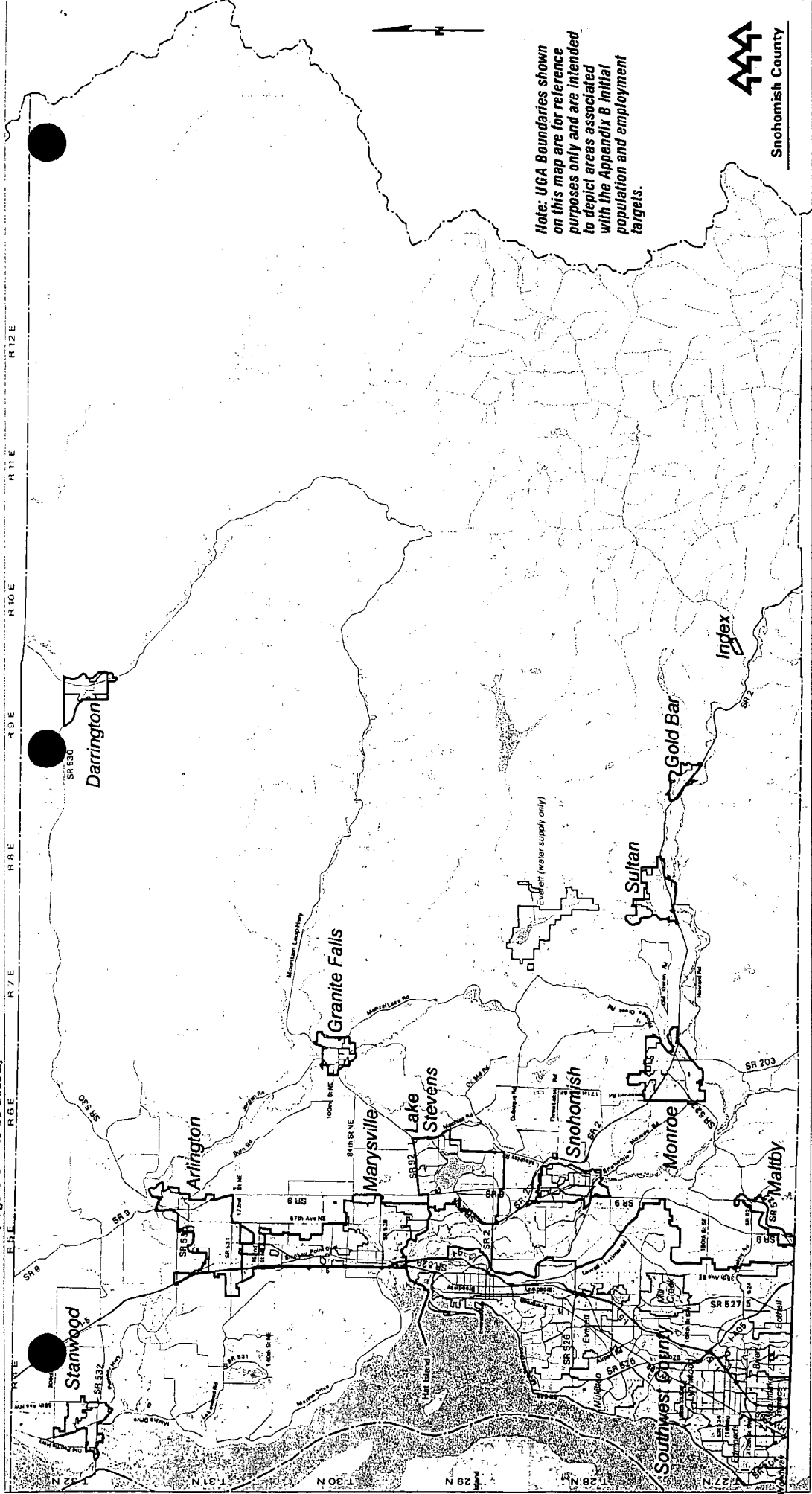
The PSRC FAZ population and employment forecasts were used to develop the draft initial city and UGA growth target ranges in the following way. The PSRC total population forecasts for Snohomish County for the years 2020 and 2030 were interpolated to arrive at a 2025 population forecast of 922,677. Growth to the year 2025 for each FAZ was also interpolated using the individual FAZ-level 2020 and 2030 forecasts. A relationship between FAZ and city/UGA geography was established to determine the 2025 forecasts by cities and UGAs. For those FAZs split by city or UGA boundaries, the relative share of year 2000 population and employment located within the incorporated or UGA portion of the FAZ was used to help develop the 2025 jurisdictional or UGA forecasts.

In order to develop growth target ranges that matched the narrower SCT low-to-high countywide population range for 2025 described above, PSRC forecasted growth to 2025 was adjusted downwards by 19% for the low population target and upwards by 23% for the high population target. The same percentage adjustments were used to develop the low-high employment ranges for 2025.

The PAC sent out the draft initial 2025 target ranges for jurisdictional review on January 9, 2003. The PAC began reviewing city feedback on specific target preferences in April and continued to receive and review local feedback throughout the summer. Summing the initial preferences indicated by jurisdictions results in a total countywide population of 899,200 for 2025. These initial targets represent a commitment among jurisdictions in Snohomish County to evaluate plan updates over the next two years that will allow for accommodation of this amount of countywide population growth -- well within the 795,700 (low) and 1,062,900 (high) OFM population forecast range required by the GMA.

Any differences between these initial targets and subsequently adopted growth targets in updated local plans will be reconciled during the SCT target reconciliation process, concluding with the adoption of final 2025 targets in the CPPs expected during 2005-06.

Note that for all tables in Appendix B, estimates and forecasts for incorporated and unincorporated areas were developed using constant city boundaries (as of April 1, 2002) over time.



Legend

- Urban Growth Area (UGA) Boundary
- County Boundary
- Township Grid

Appendix B

**Urban Growth Area (UGA) Boundaries
October 22, 2003
Snohomish County**

- Incorporated City Area
 - National Forest
- Scale in Miles
0 1.25 1.5

October 2003
Map Produced by Snohomish County
Department of Planning and Development Services
GIS TEAM, 60111 172nd Avenue, Everett, WA 98203
Snohomish County declines any warranty of inaccuracy, completeness or quality of data depicted on this map. Any user of this map assumes all responsibility for the use of the information and for any damages, losses, or liability arising from any use of this map.

Appendix B
**Southwest
 Snohomish County
 Initial
 MUGA* Boundaries
 October 22, 2003**

*MUGA - Municipal Urban Growth Area

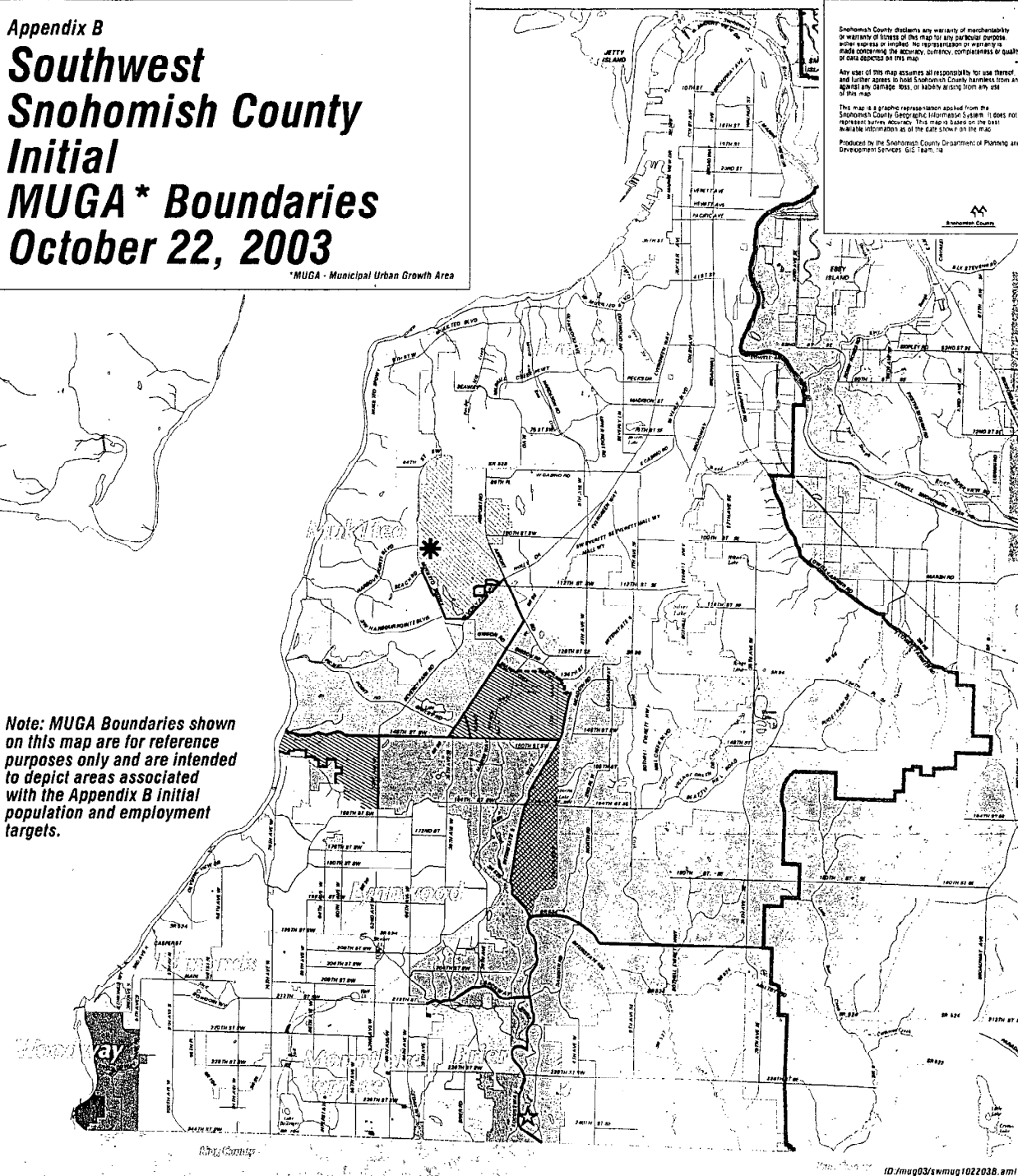
Snohomish County disclaims any warranty of merchantability or warranty of fitness of this map for any particular purpose, either express or implied. No representation or warranty is made concerning the accuracy, currency, completeness or quality of data depicted on this map.

Any user of this map assumes all responsibility for use thereof and further agrees to hold Snohomish County harmless from and against any damage, loss, or liability arising from any use of this map.

This map is a graphic representation based on the Snohomish County Geographic Information System. It does not represent survey accuracy. This map is based on the best available information as of the date shown on the map.

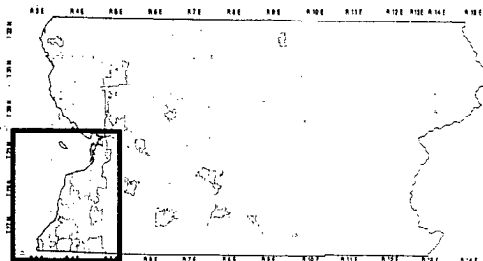
Produced by the Snohomish County Department of Planning and Development Services GIS Team, 10/03

Note: MUGA Boundaries shown on this map are for reference purposes only and are intended to depict areas associated with the Appendix B initial population and employment targets.



- Paine Field, Silver Firs, and Cathcart Areas
- City of Mukilteo
- Initial Mukilteo MUGA
- City of Everett
- Initial Everett MUGA
- City of Lynnwood
- Lynnwood MUGA
- City of Mill Creek
- Initial Mill Creek MUGA
- City of Mountlake Terrace
- Initial Mountlake Terrace MUGA
- City of Brier

- Initial Brier MUGA
- City of Bothell
- Initial Bothell MUGA
- City of Edmonds
- Initial Edmonds MUGA
- City of Woodway
- Initial Woodway MUGA
- Urban Growth Area (UGA) Boundary
- Initial MUGA Boundary
- Alternative MUGA Boundary (Some Neighborhood Options Reflected)
- Incorporated City Boundary



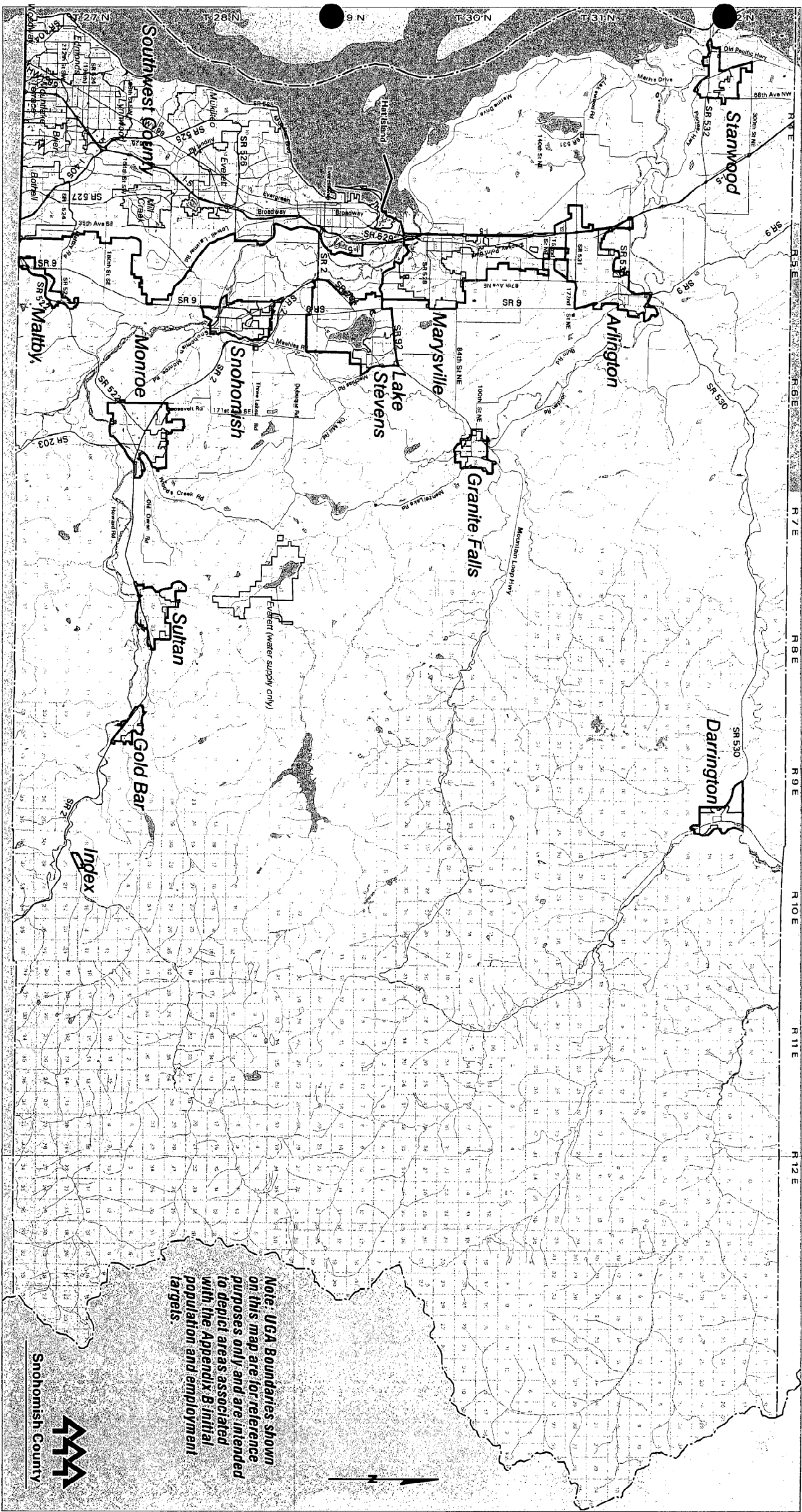
Map Area Enlarged

- Gap Area Not Claimed by Any City
- Overlap Area Claimed by Two Cities

- Under discussion between Cities and County. May be reviewed under separate interlocal agreement.
- Final boundary between Bothell and Brier to be determined.

Note: Paine Field, Silver Firs, and Cathcart Areas are not assigned to a city at the request of the County.

R 5 E R 6 E R 7 E R 8 E R 9 E R 10 E R 11 E R 12 E



Legend

- Urban Growth Area (UGA) Boundary
- County Boundary
- Township Grid

Appendix B

Urban Growth Area (UGA) Boundaries
October 22, 2003
Snohomish County

- Incorporated City Area
- National Forest

Scale in Miles
0 2.5 5

Note: UGA Boundaries shown on this map are for reference purposes only and are intended to depict areas associated with the Appendix B initial population and employment targets.

October 2003
Map Produced by Snohomish County
Department of Planning and Development Services,
GIS TEAM, c:\p\gis, w:\p\gis\carto\gen\count\17 and
Snohomish County disclaims any warranty of merchantability or warranty of fitness of this map for any particular purpose, and expressly or implied. No representation or warranty is made by the County of Snohomish as to the accuracy or quality of data depicted on this map. Any user of this map assumes all responsibility for use thereof, and further agrees to hold Snohomish County harmless from and against any damage, loss, or liability arising from any use of this map.



Appendix B

Southwest Snohomish County Initial MUGA* Boundaries October 22, 2003

*MUGA - Municipal Urban Growth Area

Snohomish County disclaims any warranty of merchantability or warranty of fitness of this map for any particular purpose, either express or implied. No representation or warranty is made concerning the accuracy, currency, completeness or quality of data depicted on this map.

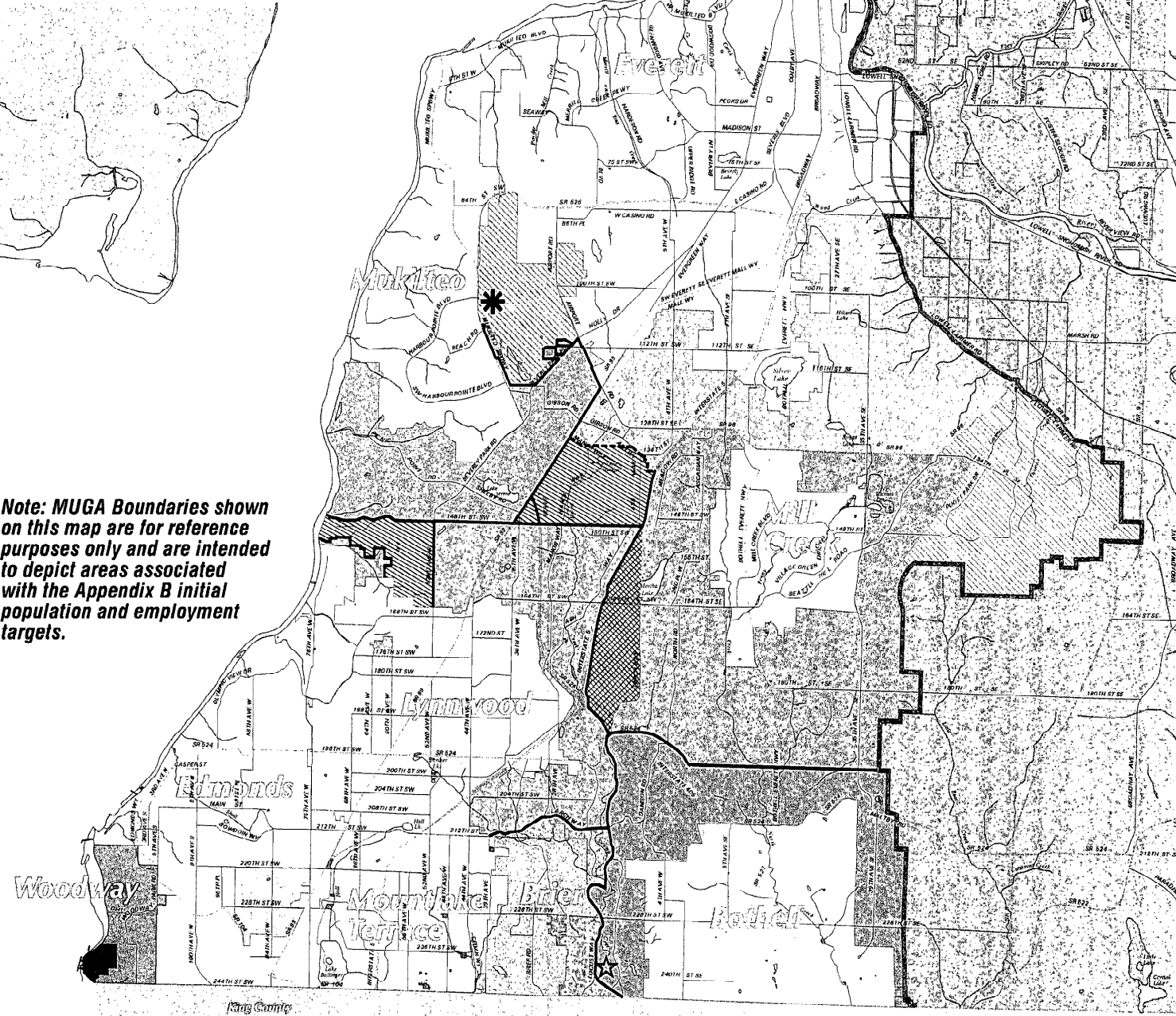
Any user of this map assumes all responsibility for use thereof, and further agrees to hold Snohomish County harmless from and against any damage, loss, or liability arising from any use of this map.

This map is a graphic representation applied from the Snohomish County Geographic Information System. It does not represent survey accuracy. This map is based on the best available information as of the date shown on the map.

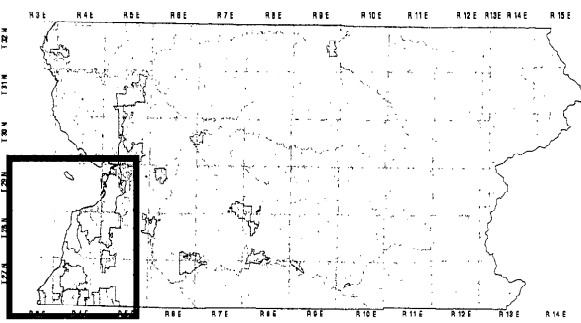
Produced by the Snohomish County Department of Planning and Development Services, GIS Team, Inc.



Note: MUGA Boundaries shown on this map are for reference purposes only and are intended to depict areas associated with the Appendix B initial population and employment targets.



- | | | | |
|--|---|--|---|
| | Paine Field, Silver Firs, and Cathcart Areas | | Initial Brier MUGA |
| | City of Mukilteo | | Initial Bothell MUGA |
| | Initial Mukilteo MUGA | | City of Edmonds |
| | City of Everett | | Initial Edmonds MUGA |
| | Initial Everett MUGA | | City of Woodway |
| | City of Lynnwood | | Initial Woodway MUGA |
| | Lynnwood MUGA | | City of Mill Creek |
| | City of Mill Creek | | Initial Mill Creek MUGA |
| | Initial Mill Creek MUGA | | City of Mountlake Terrace |
| | City of Mountlake Terrace | | Initial Mountlake Terrace MUGA |
| | Initial Mountlake Terrace MUGA | | City of Brier |
| | City of Brier | | Urban Growth Area (UGA) Boundary |
| | Urban Growth Area (UGA) Boundary | | Initial MUGA Boundary |
| | Initial MUGA Boundary | | Alternative MUGA Boundary (Some Neighborhood Options Reflected) |
| | Alternative MUGA Boundary (Some Neighborhood Options Reflected) | | Incorporated City Boundary |
| | Incorporated City Boundary | | |



Map Area Enlarged

- | | |
|--|------------------------------------|
| | Gap Area Not Claimed by Any City |
| | Overlap Area Claimed by Two Cities |

Note: Paine Field, Silver Firs, and Cathcart Areas are not assigned to a city at the request of the County.

- | | |
|--|---|
| | Under discussion between Cities and County
May be reviewed under separate interlocal agreement |
| | Final boundary between Bothell and Brier to be determined |