

# Snohomish County Parks & Recreation Camping Improvements

▲ Parks smaller than 35 acres

### Snohomish County Parks Classification

- Community
- Neighborhood
- Open Space/Preserve
- Regional
- Special Use
- Trail

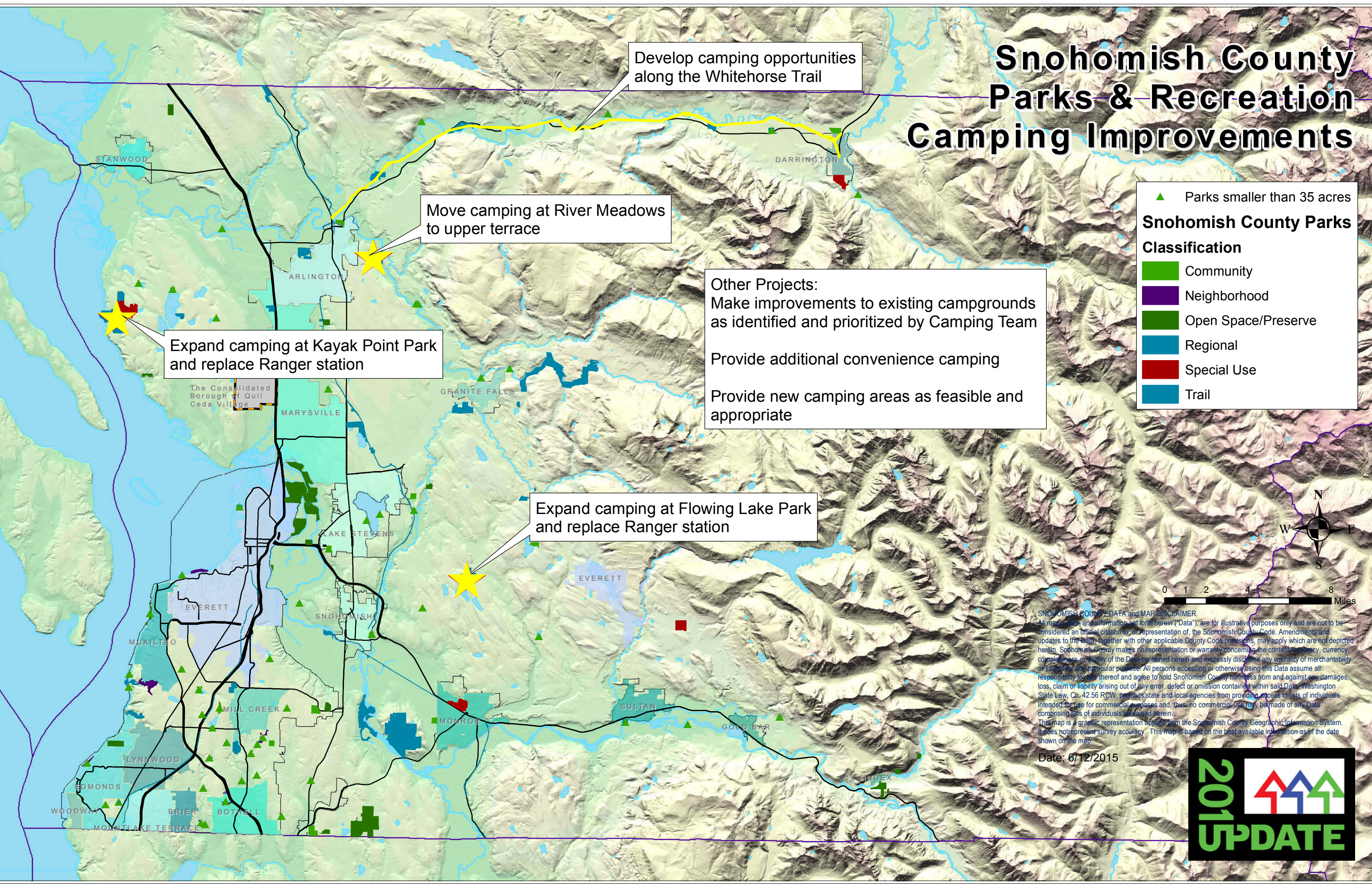
**Other Projects:**  
 Make improvements to existing campgrounds as identified and prioritized by Camping Team  
 Provide additional convenience camping  
 Provide new camping areas as feasible and appropriate

Develop camping opportunities along the Whitehorse Trail

Move camping at River Meadows to upper terrace

Expand camping at Kayak Point Park and replace Ranger station

Expand camping at Flowing Lake Park and replace Ranger station



**SNOHOMISH COUNTY DATA and MAP DISCLAIMER**  
 All maps, data, and information set forth herein ("Data"), are for illustrative purposes only and are not to be considered an official citation to, or representation of, the Snohomish County Code. Amendments and updates to the Data, together with other applicable County Code provisions, may apply which are not depicted herein. Snohomish County makes no representation or warranty concerning the content, accuracy, currency, completeness or quality of the Data contained herein and expressly disclaims any warranty of merchantability or fitness for any particular purpose. All persons accessing or otherwise using this Data assume all responsibility for any thereof and agree to hold Snohomish County harmless from and against any damages, loss, claim or liability arising out of any error, defect or omission contained within said Data. Washington State Law, Ch. 42.56 RCW, prohibits state and local agencies from providing access to lists of individuals intended for use for commercial purposes and, thus, no commercial use may be made of any Data comprising lists of individuals contained herein.  
 This map is a graphic representation applied from the Snohomish County Geographic Information System. It does not represent survey accuracy. This map is based on the best available information as of the date shown on the map.

Date: 6/12/2015

