




Snohomish County Parks & Recreation Soccer and Baseball Facilities



Public Provider Field Inventory

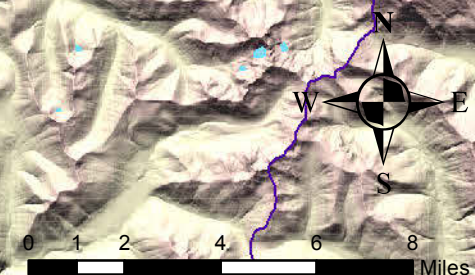
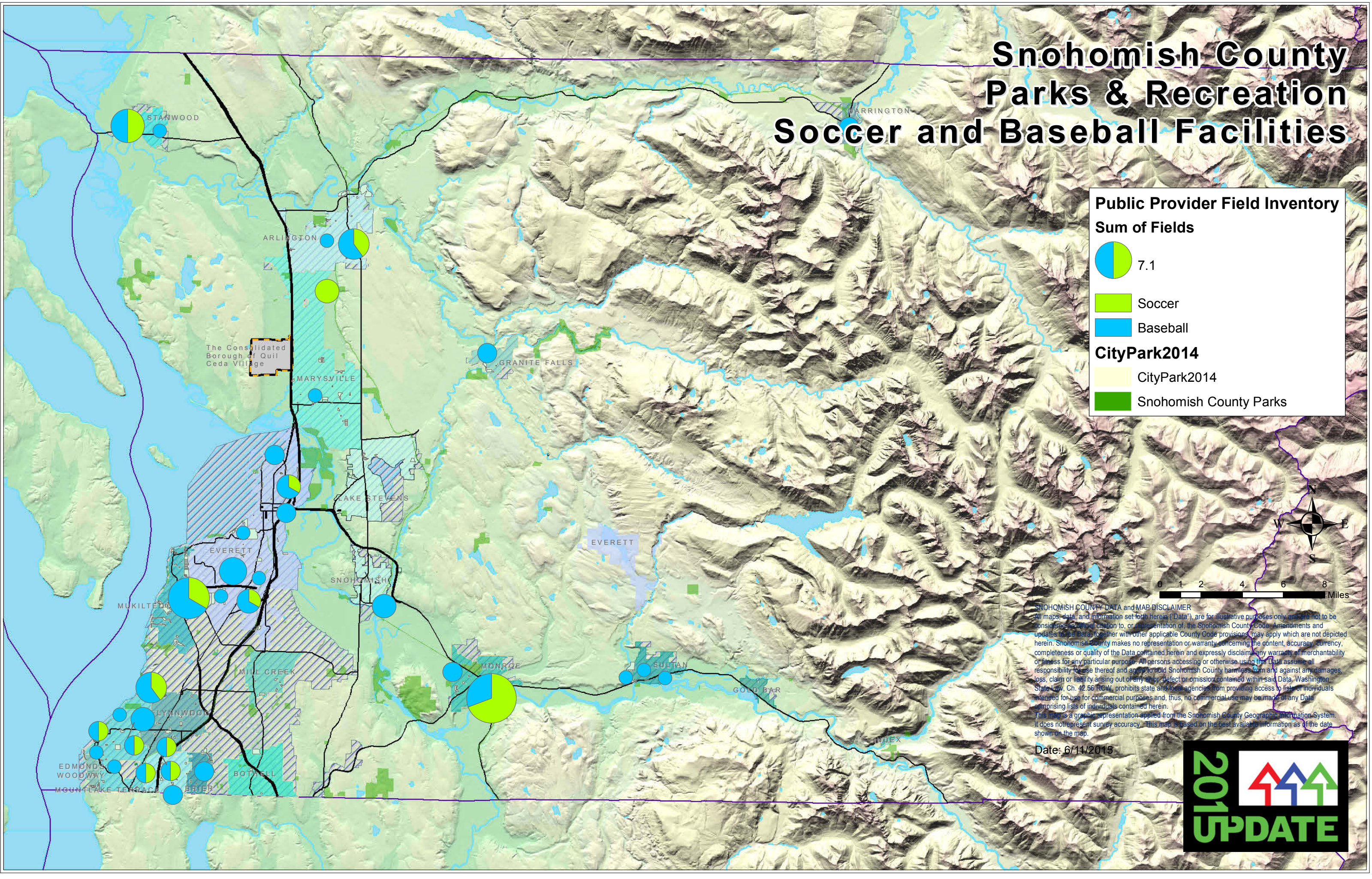
Sum of Fields

 7.1

-  Soccer
-  Baseball

CityPark2014

-  CityPark2014
-  Snohomish County Parks



SNOHOMISH COUNTY DATA and MAP DISCLAIMER
 All maps, data, and information set forth herein ("Data"), are for illustrative purposes only and are not to be considered an official action, or representation of, the Snohomish County Code. Amendments and updates to the Data, together with other applicable County Code provisions may apply which are not depicted herein. Snohomish County makes no representation or warranty concerning the content, accuracy, currency, completeness or quality of the Data contained herein and expressly disclaims any warranty of merchantability or fitness for any particular purpose. All persons accessing or otherwise using the Data assume all responsibility for use thereof and agree to hold Snohomish County harmless from and against any damages, loss, claim or liability arising out of any error, defect or omission contained within said Data. Washington State Law, Ch. 42.56 RCW, prohibits state and local agencies from providing access to lists of individuals intended for use for commercial purposes and, thus, no commercial use may be made of any Data comprising lists of individuals contained herein.
 This map is a graphic representation applied from the Snohomish County Geographic Information System. It does not represent survey accuracy. This map is based on the best available information as of the date shown on the map.

Date: 6/11/2015

