

**Exhibit D  
Amended Ordinance No. 18-058  
GPP18-5 – Capital Facilities Plan  
Capital Facility Plan – Appendix B**

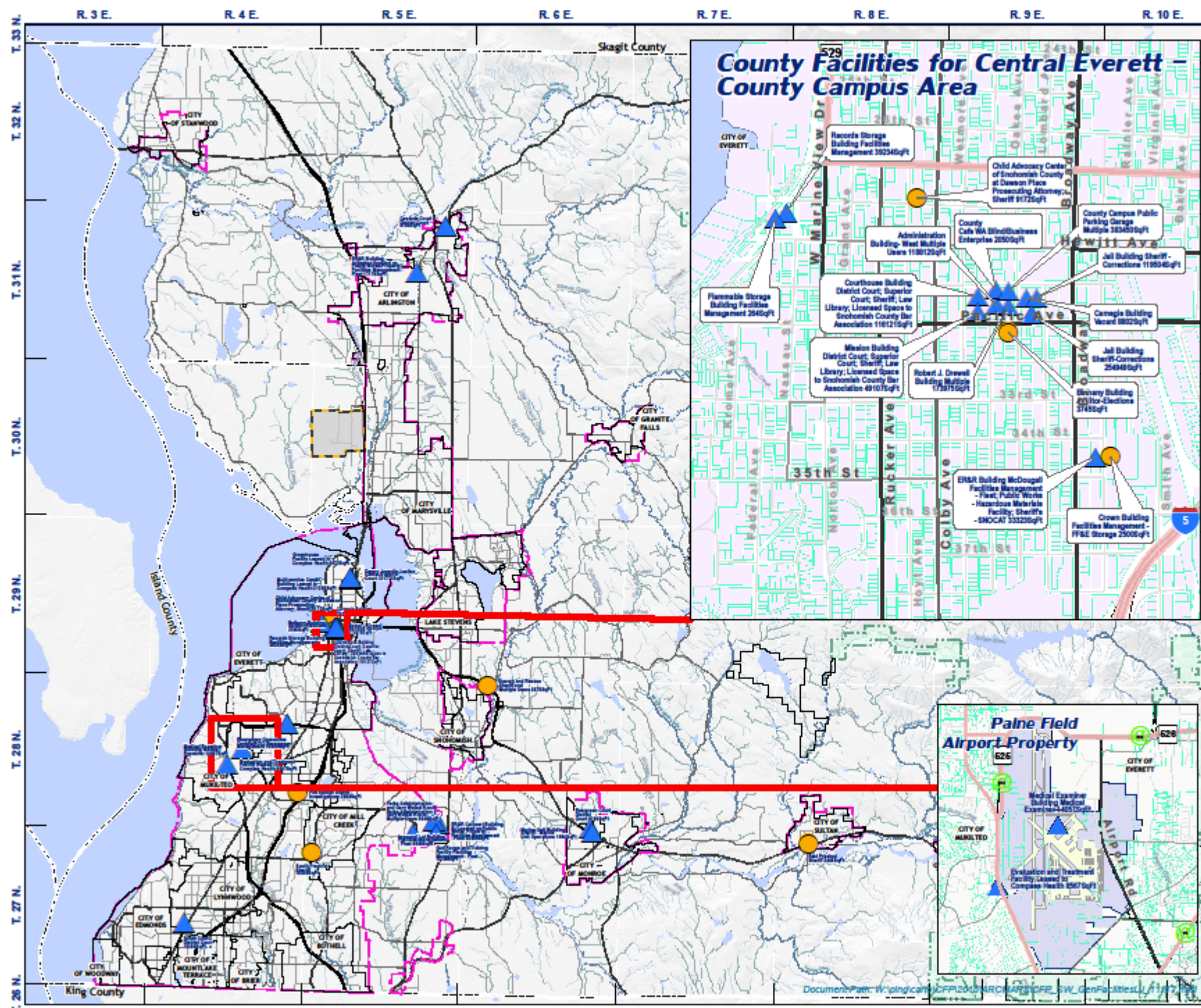
**Appendix B**

**The Capital Facilities Plan / Year 2015 Update**

**Existing Inventories – Capital Facilities Plan Maps:**

**General Government / Law and Justice  
Fire Protection Facilities  
Public Schools  
Solid Waste  
Public Water Systems  
Public Wastewater Systems**

Appendix B contains Figures 1-7 reflecting the capital facilities inventory maps utilized by the county in preparing the CFP. As it relates to those public facilities provided by non-county agencies, the maps in Appendix B reflect the county's attempt to identify the service area boundaries of the respective non-county agencies based on review of the most recent external functional plans of those agencies as summarized in Section II. Such maps are for illustrative purposes only and may omit gaps and overlaps in service area boundaries.



# GENERAL COUNTY FACILITIES with LAW AND JUSTICE

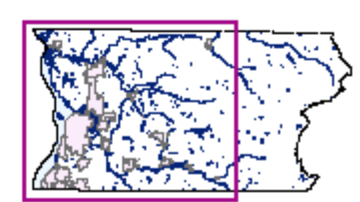
## Snohomish County Capital Facilities Inventory Adopted: XXXXXXXXX

**SNOHOMISH COUNTY DATA and MAP DISCLAIMER**  
 All maps, data, and information set forth herein ("Data"), are for illustrative purposes only and are not to be considered an official citation to, or representation of, the Snohomish County Code. Amendments and updates to the Data, together with other applicable County Code provisions, may apply which are not depicted herein. Snohomish County makes no representation or warranty concerning the content, accuracy, currency, completeness or quality of the Data contained herein and expressly disclaims any warranty of merchantability or fitness for any particular purpose. All persons accessing or otherwise using this Data assume all responsibility for use thereof and agree to hold Snohomish County harmless from and against any damages, loss, claim or liability arising out of any error, defect or omission contained within said Data. Washington State Law, Ch. 42.56 RCW, prohibits state and local agencies from providing access to lists of individuals intended for use for commercial purposes and, thus, no commercial use may be made of any Data comprising lists of individuals contained herein.

### FACILITIES REPRESENTED BY COUNTY OWNERSHIP

- ▲ County Owned Property
- Property Leased to County
- Tulalip Reservation Boundary
- Urban Growth Area Boundary
- The Consolidated Borough of Quil Ceda Village
- Incorporated City Boundary
- U. S. National Forest Land
- gis\_features.DBA.hydrography\_waterbody\_snoco

Parks and Parklands not represented on this map



Map Area Enlarged







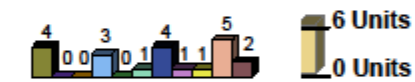


# FIRE PROTECTION FACILITIES for REPORTING FIRE DISTRICTS

Snohomish County Capital Facilities Inventory  
Adopted: XXXXXXXX

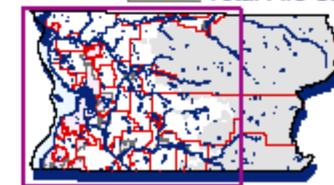
SNOHOMISH COUNTY DATA and MAP DISCLAIMER:  
All maps, data, and information set forth herein ("Data"), are for illustrative purposes only and are not to be considered an official citation to, or representation of, the Snohomish County Code. Amendments and updates to the Data, together with other applicable County Code provisions, may apply which are not depicted herein. Snohomish County makes no representation or warranty concerning the content, accuracy, currency, completeness or quality of the Data contained herein and expressly disclaims any warranty of merchantability or fitness for any particular purpose. All persons accessing or otherwise using this Data assume all responsibility for use thereof and agree to hold Snohomish County harmless from and against any damages, loss, claim or liability arising out of any error, defect or omission contained within said Data. Washington State Law, Ch. 42.56 RCW, prohibits state and local agencies from providing access to lists of individuals intended for use for commercial purposes and, thus, no commercial use may be made of any Data comprising lists of individuals contained herein.

## MAJOR EQUIPMENT - REPORTING DISTRICTS

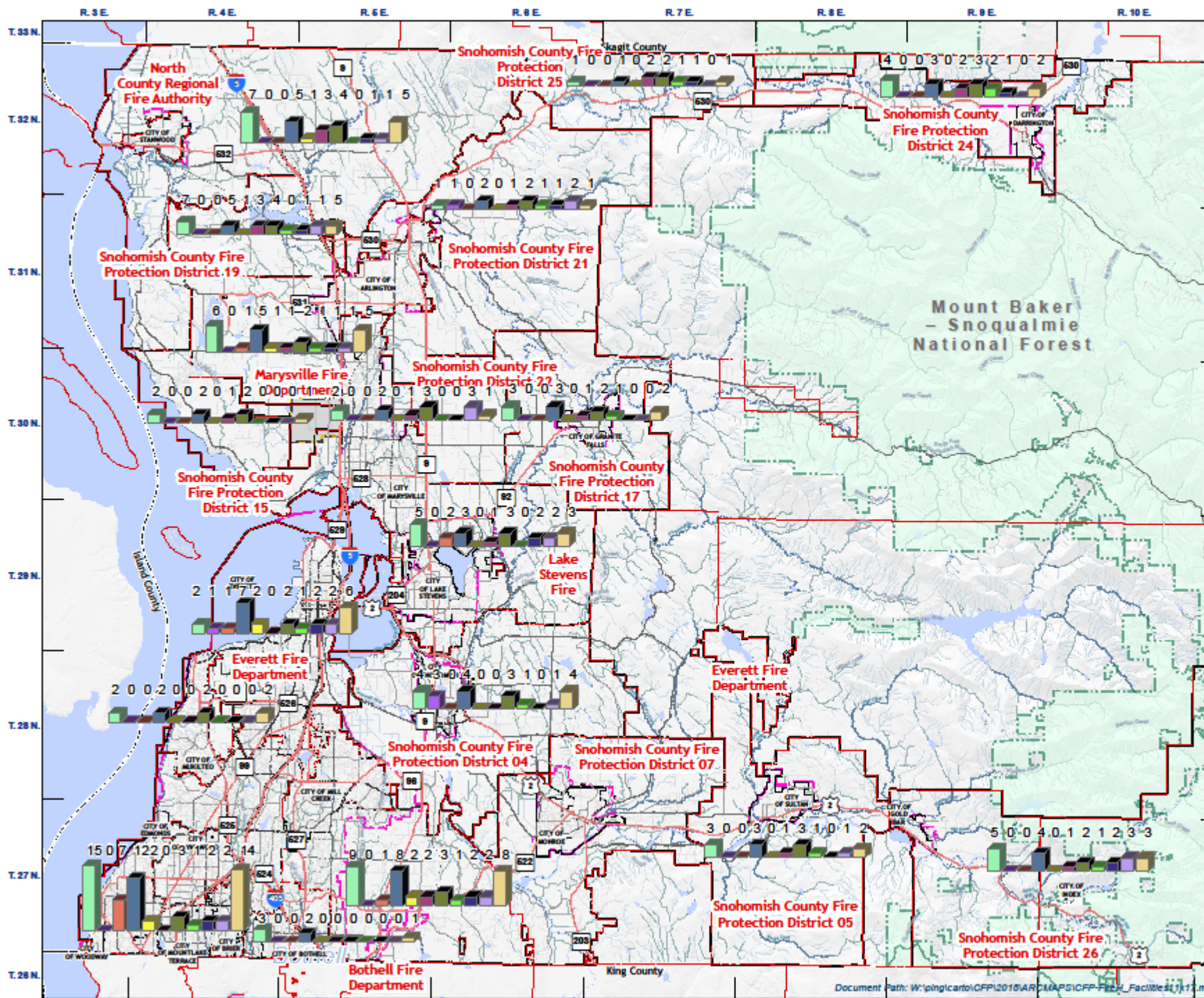


Number of Vehicles, Trucks, Units, etc.

- Aid Unit
- Emergency Management Vehicle
- Fire Investigation Vehicle
- Pumper Truck
- Ladder Truck
- Tenders- Water Truck
- Rescue Vehicle
- Command Vehicle
- Water Craft
- Specialized Apparatus
- Total Fire Stations



Map Area Enlarged



Document Path: W:\p\g\car\01\FPI\2018\ARC\MAPS\ICFP\_Facilities\_11.mxd

**SNOHOMISH COUNTY CAPITAL FACILITIES INVENTORY**

**FIGURE 3**







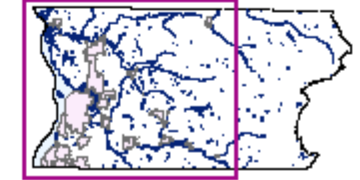
# SOLID WASTE FACILITIES

Snohomish County Capital Facilities Inventory  
Adopted: XXXXXXXXX

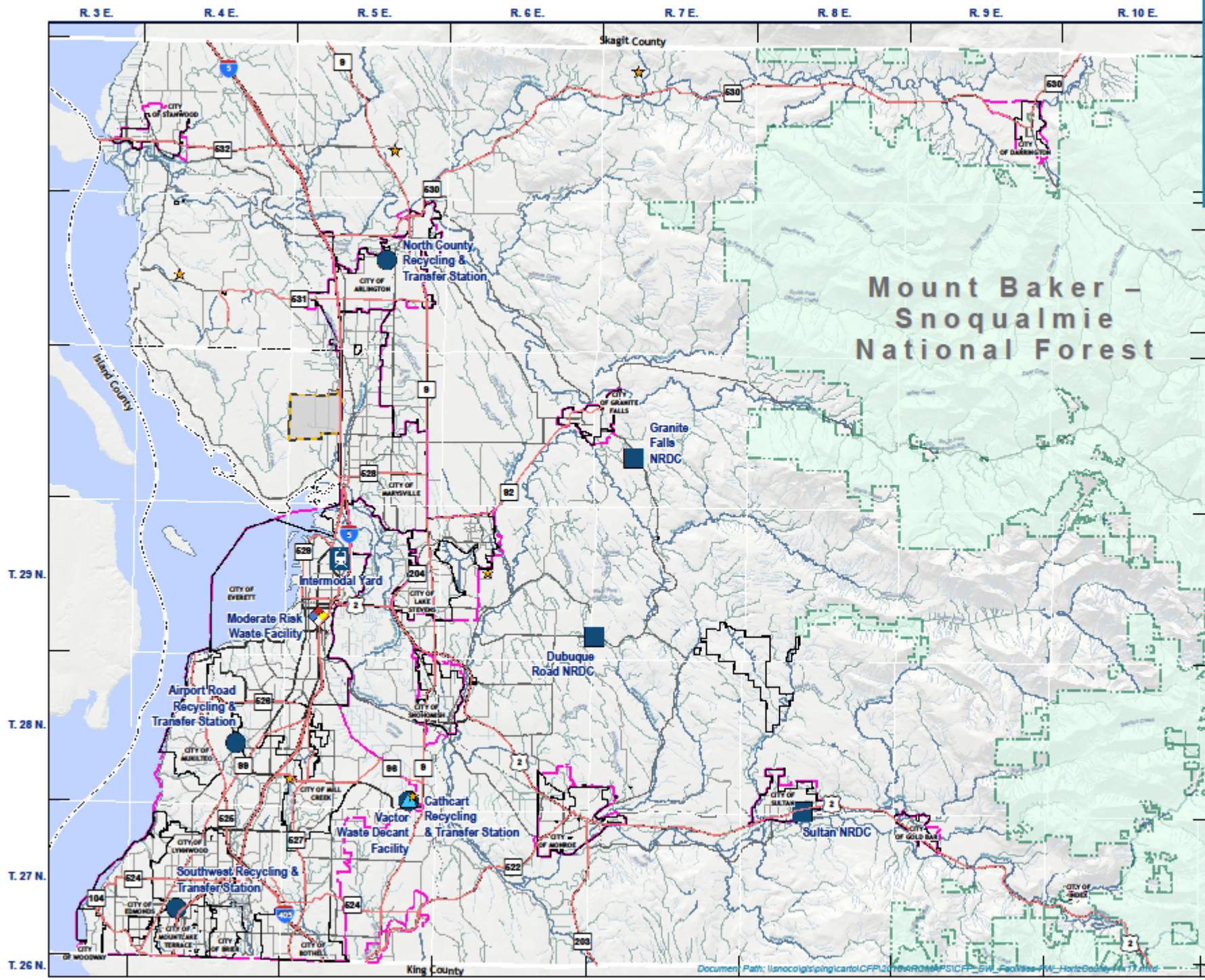
**SNOHOMISH COUNTY DATA and MAP DISCLAIMER**  
All maps, data, and information set forth herein ("Data"), are for illustrative purposes only and are not to be considered an official citation to, or representation of, the Snohomish County Code. Amendments and updates to the Data, together with other applicable County Code provisions, may apply which are not depicted herein. Snohomish County makes no representation or warranty concerning the content, accuracy, currency, completeness or quality of the Data contained herein and expressly disclaims any warranty of merchantability or fitness for any particular purpose. All persons accessing or otherwise using this Data assume all responsibility for use thereof and agree to hold Snohomish County harmless from and against any damages, loss, claim or liability arising out of any error, defect or omission contained within said Data. Washington State Law, Ch. 42.56 RCW, prohibits state and local agencies from providing access to lists of individuals intended for use for commercial purposes and, thus, no commercial use may be made of any Data comprising lists of individuals contained herein.

## FACILITIES

- ★ Monitored Landfill
- Recycling & Transfer Station
- Neighborhood Recycling & Disposal Center
- ◆ Moderate Risk Waste Facility
- ▲ Vector Waste Decant Facility
- ☒ Intermodal Yard
- Tulalip Reservation Boundary
- ▭ Urban Growth Area Boundary
- ▭ The Consolidated Borough of Quil Ceda Village
- ▭ Incorporated City Boundary
- ▭ U. S. National Forest Land



Map Area Enlarged





# EXPANDING PUBLIC WATER SYSTEMS and FACILITIES

Snohomish County Capital Facilities Inventory  
Adopted: XXXXXXXXXXXXXXXXXXXX

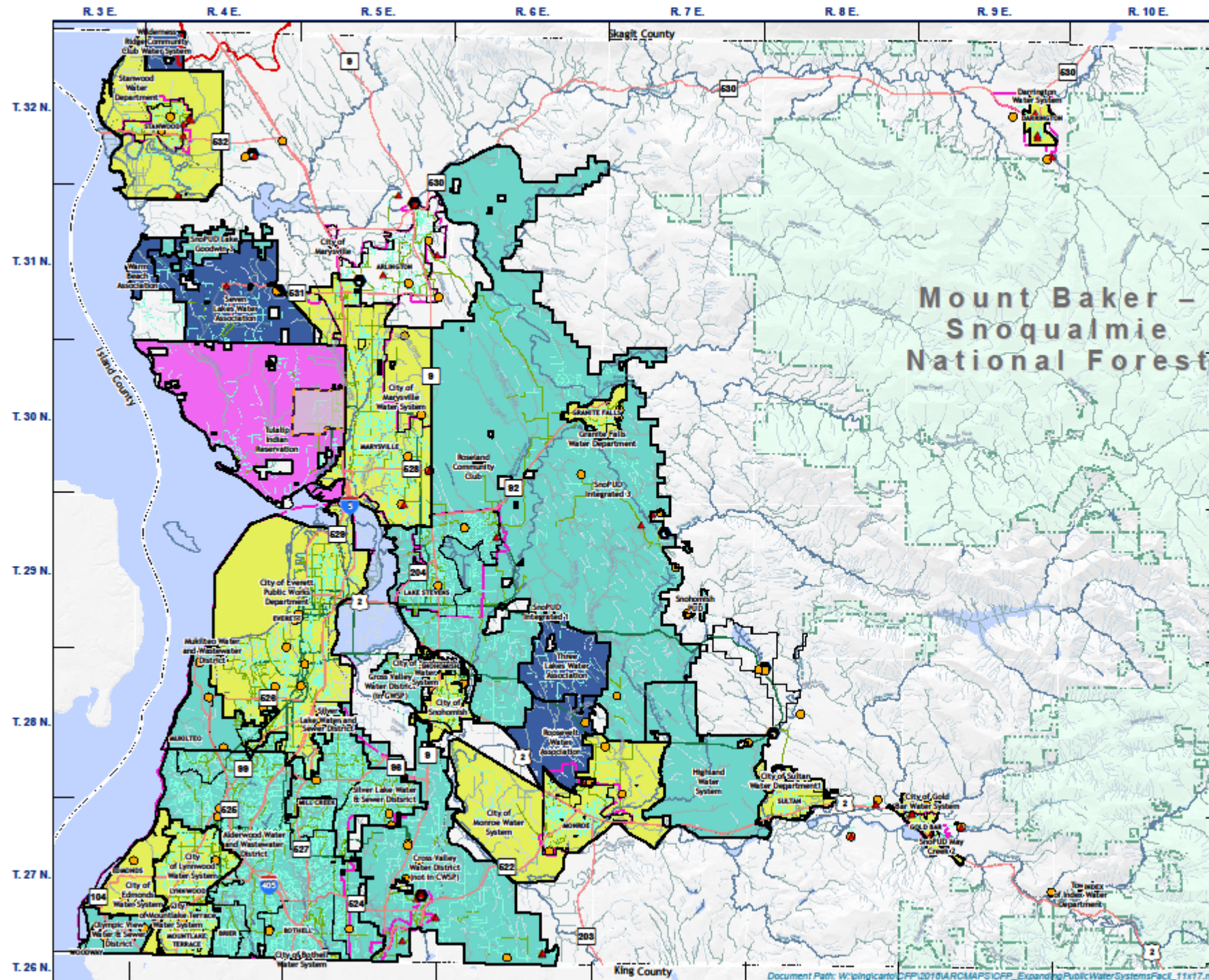
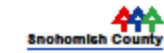
**SNOHOMISH COUNTY DATA and MAP DISCLAIMER**  
All maps, data, and information set forth herein ("Data"), are for illustrative purposes only and are not to be considered an official citation to, or representation of, the Snohomish County Code. Amendments and updates to the Data, together with other applicable County Code provisions, may apply which are not depicted herein. Snohomish County makes no representation or warranty concerning the content, accuracy, currency, completeness or quality of the Data contained herein and expressly disclaims any warranty of merchantability or fitness for any particular purpose. All persons accessing or otherwise using this Data assume all responsibility for use thereof and agree to hold Snohomish County harmless from and against any damages, loss, claim or liability arising out of any error, defect or omission contained within said Data. Washington State Law, Ch. 42.56 RCW, prohibits state and local agencies from providing access to lists of individuals intended for use for commercial purposes and, thus, no commercial use may be made of any Data comprising lists of individuals contained herein.

## WATER FACILITIES AND

- Water Purification Plant
- Standpipe or Reservoir
- Water District Well
- Tulalip Reservation Boundary
- Incorporated City Boundary
- The Consolidated Borough of Quil Ceda Village
- Urban Growth Area Boundary
- Carpenter-Fisher Subbasin Well Moritorium Area
- Waterline Diameter Greater Than or Equal to 19 inches and Less than 100 inches
- 11 Inches and Less than 18 Inches
- Waterline Diameter Less Than 10 inches
- Expanding Association Owned
- Expanding Municipal Owned
- Expanding Privately Owned
- Expanding Special Purpose District
- Expanding Tribal Owned



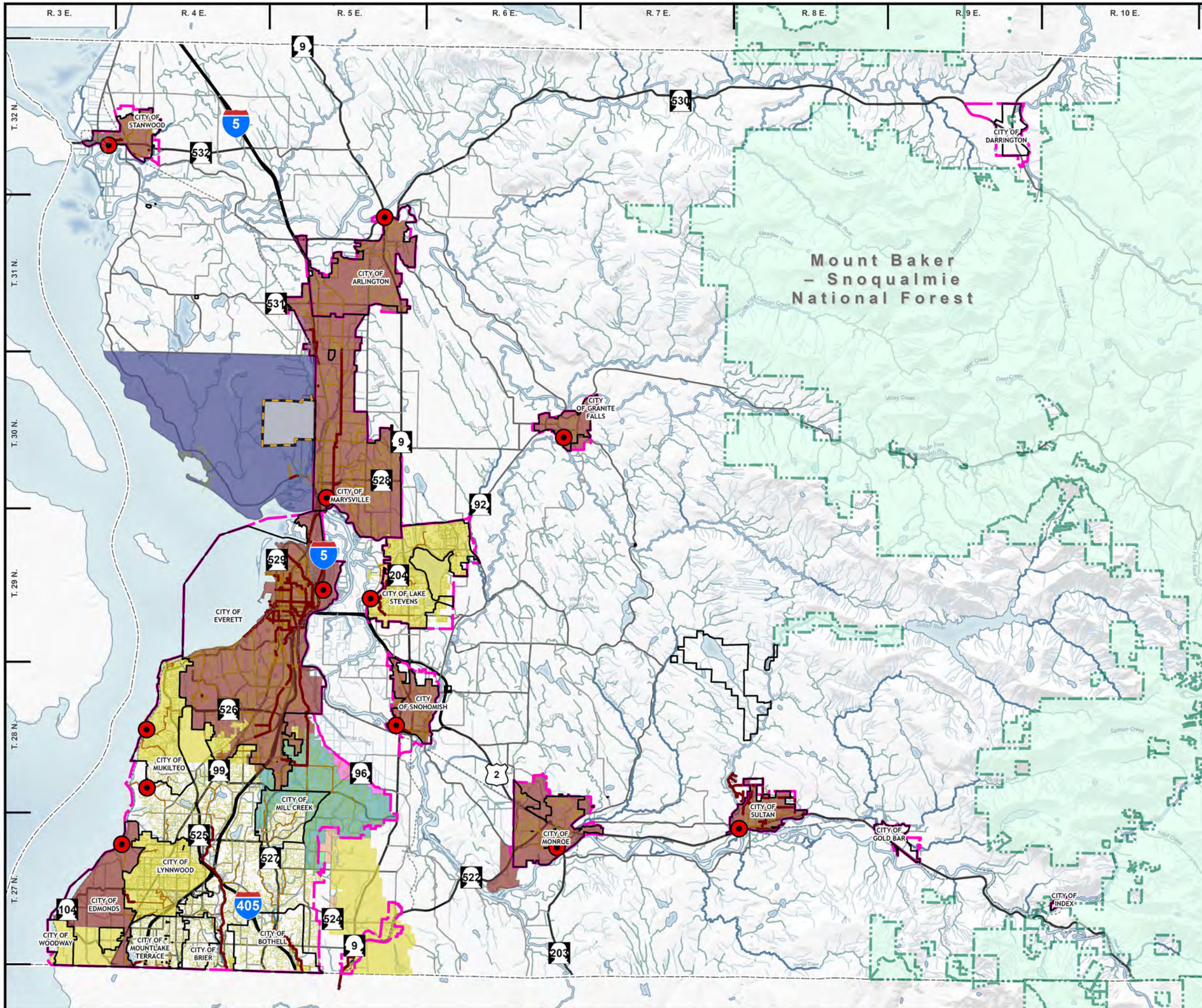
Map Area Enlarged



SNOHOMISH COUNTY CAPITAL FACILITIES INVENTORY

FIGURE 6





# PUBLIC WASTEWATER SYSTEMS

**Snohomish County Capital Facilities Inventory**  
**Effective Date: 01-09-2021**

SNOHOMISH COUNTY DATA and MAP DISCLAIMER  
 All maps, data, and information set forth herein ("Data"), are for illustrative purposes only and are not to be considered an official citation to, or representation of, the Snohomish County Code. Amendments and updates to the Data, together with other applicable County Code provisions, may apply which are not depicted herein. Snohomish County makes no representation or warranty concerning the content, accuracy, currency, completeness or quality of the Data contained herein and expressly disclaims any warranty of merchantability or fitness for any particular purpose. All persons accessing or otherwise using this Data assume all responsibility for use thereof and agree to hold Snohomish County harmless from and against any damages, loss, claim or liability arising out of any error, defect or omission contained within said Data. Washington State Law, Ch. 42.56 RCW, prohibits state and local agencies from providing access to lists of individuals intended for use for commercial purposes and, thus, no commercial use may be made of any Data comprising lists of individuals contained herein.

## FACILITIES AND DISTRICTS

- Sewage Treatment Plant
- Sewerline Diameter less than 12 Inches
- Sewerline Diameter greater than 12 Inches and less than 24 Inches
- Sewerline Diameter greater than 24 Inches and less than or equal to 84 Inches
- The Consolidated Borough of Quil Ceda Village
- Urban Growth Area Boundary
- Incorporated City Boundary
- U. S. National Forest Land
- Alderwood Water and Wastewater Agreement Area
- Cross Valley Agreement Area
- Municipal District
- Special Purpose District
- Tribal District
- Unclaimed / Alderwood Agreement Area
- Unclaimed Service Area

